

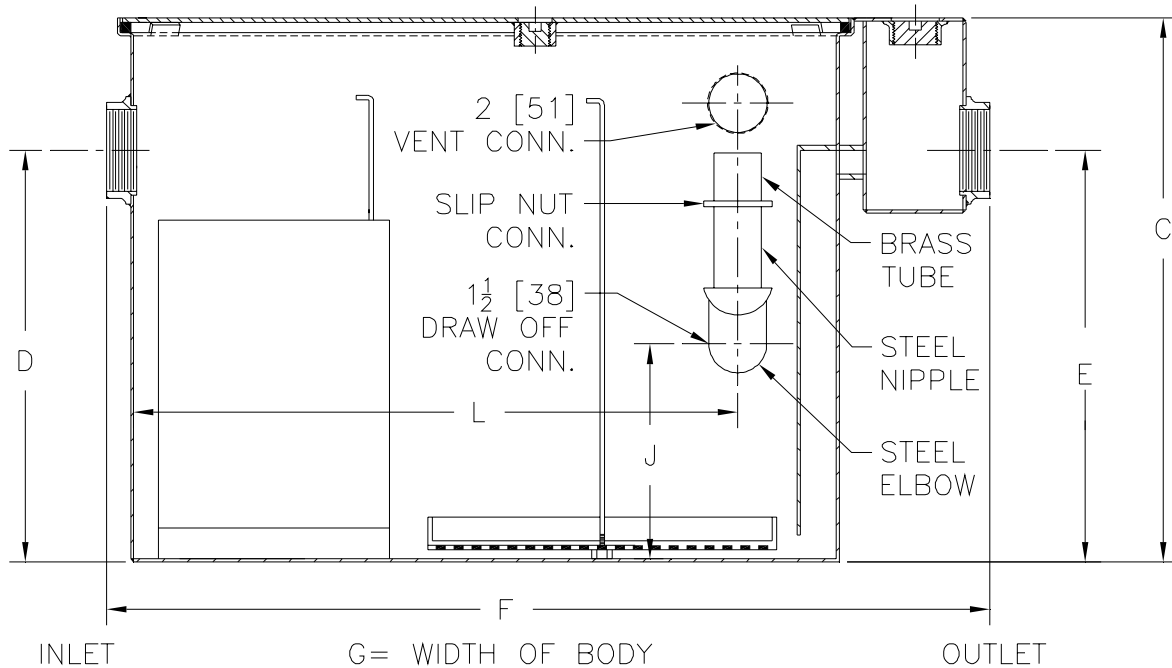


**Z1188-141**  
**75 [284] GPM LARGE CAPACITY OIL**  
**INTERCEPTOR WITH 4 [102] INLET / OUTLET**

SPECIFICATION SHEET

TAG \_\_\_\_\_

Dimensional Data (inches or [ mm ]) are Subject to Manufacturing Tolerances and Change Without Notice



Flow Rate GPM [L] Min	Inlet/ Outlet Size**	Water Capacity Gal. [L]	App. Wt. Lbs. [Kg]	No. of Covers	Dimensions In Inches					
					C	D/E	F	G	J	L
75 [284]	4 [102]	65 [246]	332 [151]	1	23 3/4 [603]	19 [483]	36 [914]	28 5/8 [727]	8 [203]	25 3/4 [654]

**ENGINEERING SPECIFICATION:** ZURN Z1188-141 Large capacity Acid Resistant Coated interior and exterior fabricated steel oil interceptor, with bronze cleanout plug and visible double wall trap seal, removable combination pressure equalizing/flow diffusing baffle and sediment bucket, horizontal baffle, adjustable oil drawoff and vent connections either side. Secured gasketed non-skid cover complete with flow control fitting. Regularly furnished with 4 [102] inlet and outlet in high position.

**OPTIONS** (Check/specify appropriate options)

**PREFIXES**

\_\_\_ Z Acid Resistant Coated Fabricated Steel\*

**SUFFIXES**

- \_\_\_ -E Acid Resistant Coated interior and exterior fabricated steel extension section. (Specify 'C' Dim. required) for recessed installation.
- \_\_\_ -HD Heavy-duty traffic cover rated at 10,000 lbs [4536] kg. maximum safe live load.
- \_\_\_ -K Anchor flange 1 3/4 [44] down from top and 2 [51] wide. No extension required to accommodate -K.

\*REGULARLY FURNISHED UNLESS OTHERWISE SPECIFIED

<b>REV.</b>	<b>DATE: 6/21/06</b>	<b>C.N. NO. 95237</b>
<b>DWG. NO. P-15299 PRODUCT NO. Z1188-141</b>		