

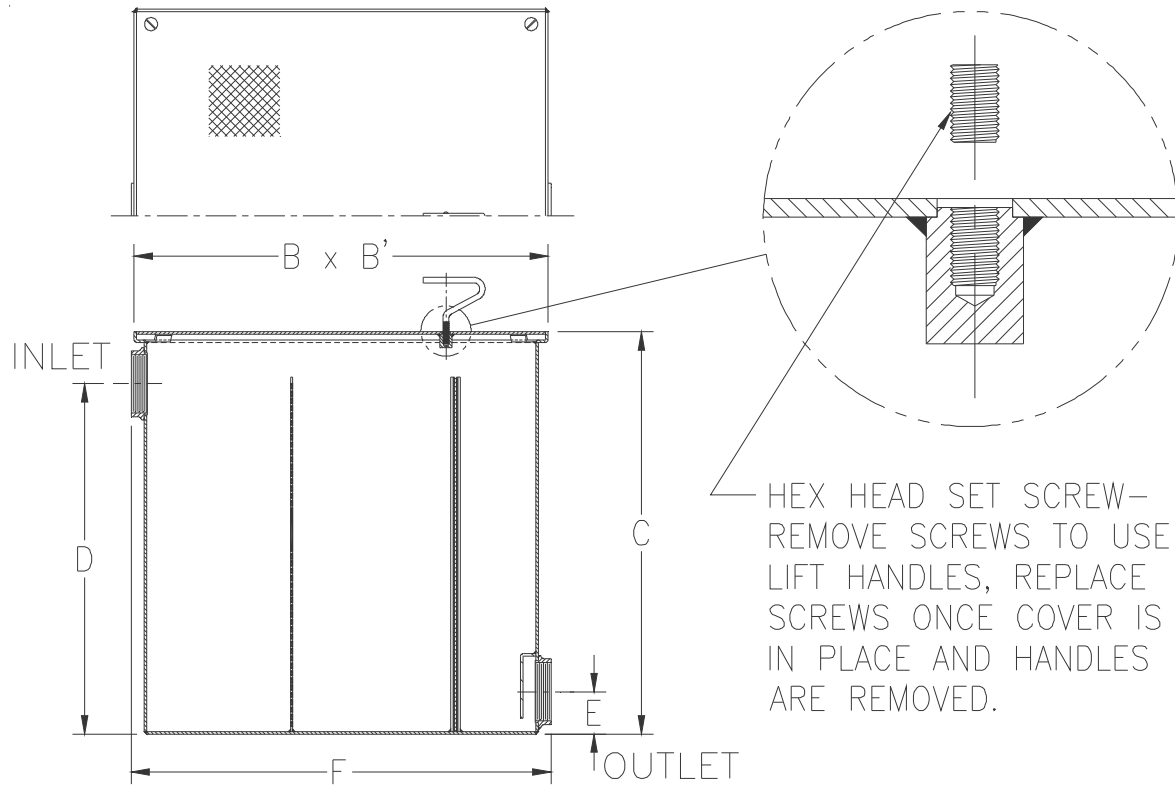


Z1185-123
SIZE 40 LINT INTERCEPTOR
W/ 8 [203] INLET/OUTLET

SPECIFICATION SHEET

TAG _____

Dimensional Data (inches and [mm]) are Subject to Manufacturing Tolerances and Change Without Notice



Size No. of Machines	Inlet/Outlet Size**	Flow Rate G.P.M. [L]	Approx. Wt. Lbs. [kg]	Dimensions In Inches					
				B	B'	C	D	E	F
40	8 [203]	400 [1514]	723 [328]	48 [1219]	48 [1219]	46 [1168]	39 [991]	6 [152]	49 [1245]

ENGINEERING SPECIFICATION: ZURN Z1185-123 Acid Resistant Coated interior and exterior fabricated steel lint interceptor, non-skid secured cover with removable lift handle, stainless lint intercepting secondary screen assembly and permanent primary straining baffle. Regularly furnished with high inlet and low outlet.

OPTIONS (Check/specify appropriate options)

PREFIXES

- ____ Z Acid Resistant Coated Fabricated Steel*
- ____ ZS All Type 304 Fabricated Stainless Steel

SUFFIXES

- ____ -E Acid Resistant Coated interior and exterior fabricated steel extension section (Specify 'C' dimension required for recessed installation).
- ____ -RS Stainless Steel Screen Replacement Assembly

REV.	DATE: 04/27/10	C.N. NO. 111061
DWG. NO. 84628	PRODUCT NO. Z1185-123	

*REGULARLY FURNISHED UNLESS OTHERWISE SPECIFIED