

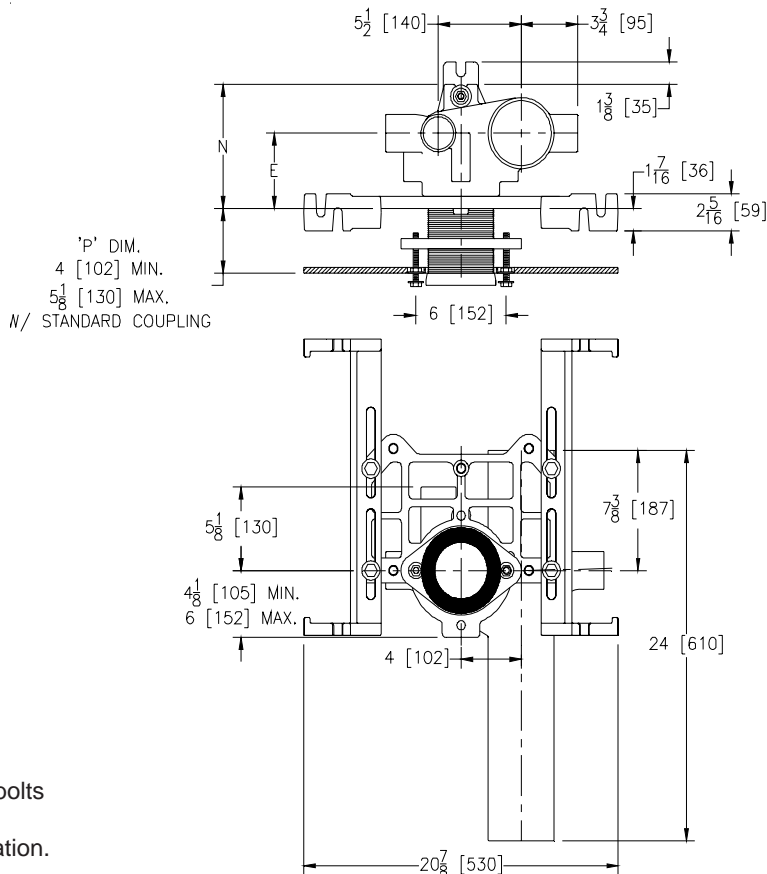


# Z1209-87

## VERTICAL OFFSET SIPHON JET WATER CLOSET SUPPORT SYSTEM WITHOUT AUXILIARY INLETS FOR FLOOR MOUNTED BACK OUTLET FIXTURES

TAG \_\_\_\_\_

Dimensional Data (inches and [ mm ]) are Subject to Manufacturing Tolerances and Change Without Notice



'P' DIM.  
4 [102] MIN.  
5 1/8 [130] MAX.  
N/ STANDARD COUPLING

**Note:**

1. Min. 'P' Dim. Obtainable=2 [51]
2. Feet bolted to floor using min. 1/2 [13] dia. bolts and back slots on carrier feet.
3. Back anchor foot required for secure installation.

Product No.	Dimension In Inches		Approx. Wt. Lbs. [kg]
	E	N	
Z1209-NL4/NR4-87	4-5/8 [117]	7-5/8 [194]	67 [30]
Z1209-HL4/HR4-87	4-5/8 [117]	7-5/8 [194]	82 [37]

**ENGINEERING SPECIFICATION:** ZURN Z1209-(-)-87 Vertical Offset Siphon Jet Water Closet "Rigid System" with 4 [102] size No-Hub or Hub and Spigot connections and 2 [51] vent. Complete with Dura-Coated cast iron main fitting, RYK foot supports, adjustable faceplate, corrosion resistant adjustable ABS coupling with integral test cap, fixture trim, and stud protectors. Rear anchor tie down, and bonded "Neo-Seal" gasket and floor mount back outlet fixture support

**PRODUCT/DEFINITION**

- \_\_\_\_\_ Z1209-NL4-87 4 [102] No-Hub Stack, Left Hand Offset Inlet, 2 [51] Left Hand Vent
- \_\_\_\_\_ Z1209-NR4-87 4 [102] No-Hub Stack, Right Hand Offset Inlet, 2 [51] Right Hand Vent
- \_\_\_\_\_ Z1209-HL4-87 4 [102] Hub & Spigot Stack, Left Hand Offset Inlet, 2 [51] Left Hand Vent
- \_\_\_\_\_ Z1209-HR4-87 4 [102] Hub & Spigot Stack, Right Hand Offset Inlet, 2 [51] Right Hand Vent

**PREFIXES**

- \_\_\_\_\_ Z D.C.C.I. System with Zurn "ZZ" Adjustable Coupling
- \_\_\_\_\_ ZQ D.C.C.I. System with Non-Adjustable Coupling

**SUFFIXES**

- \_\_\_\_\_ -A Auxiliary Support Assembly (For P-Dim. greater than 18 [457])
- \_\_\_\_\_ -CC Cast Iron Coupling
- \_\_\_\_\_ -CL Coupling Length Greater than 12 [305] (Specify length if greater than 6 [152])
- \_\_\_\_\_ -G Galvanized Cast Iron
- \_\_\_\_\_ -VP Vandal Proof Trim
- \_\_\_\_\_ -X3 3 [76] Foot Extension Assembly
- \_\_\_\_\_ -X4 4 [102] Foot Extension Assembly
- \_\_\_\_\_ -29 Mechanical Test Cap Assembly (Previously Z1210-29)
- \_\_\_\_\_ -61 "ZZ" Coupling Wrench

\*REGULARLY FURNISHED UNLESS OTHERWISE SPECIFIED

REV.	DATE: 4/13/10	C.N. NO. 111007
DWG. NO. 84593	PRODUCT NO. Z1209-87	