

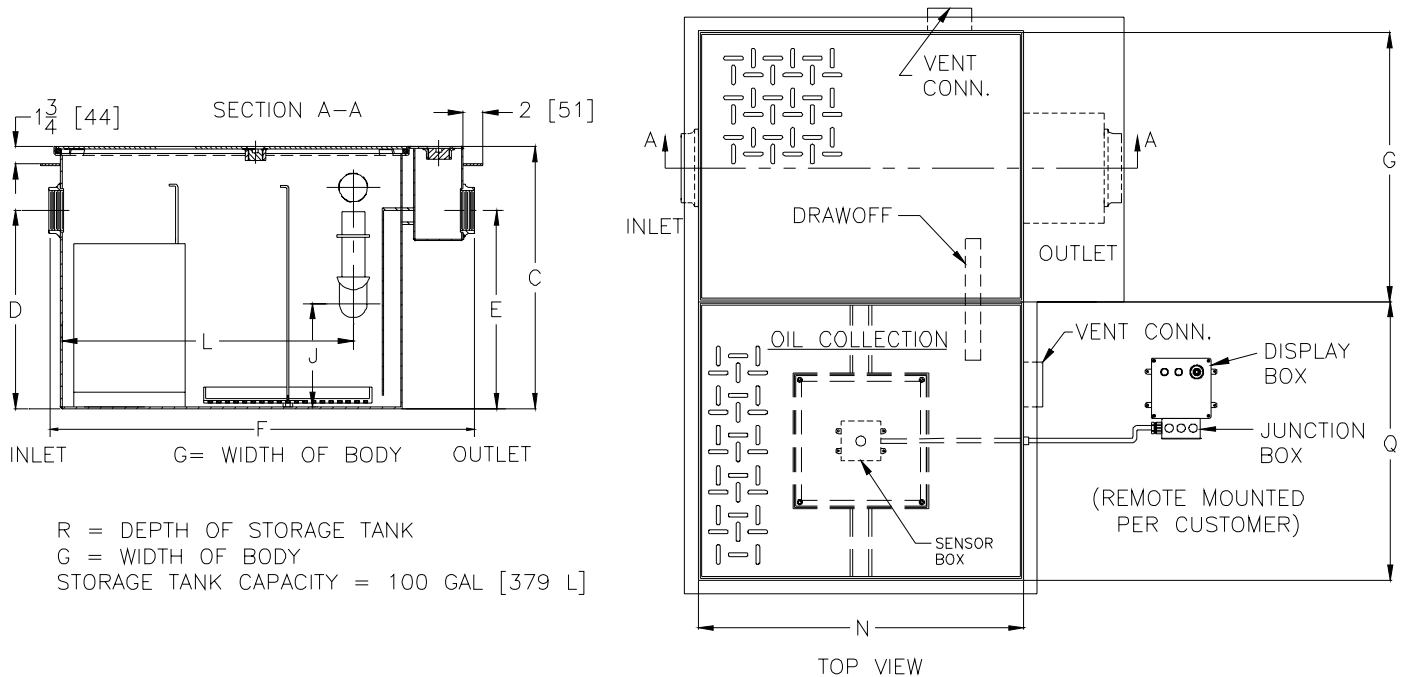


# Z1188-107

## LARGE CAPACITY OIL INTERCEPTOR W/ INTEGRAL STORAGE TANK AND OIL LEVEL SENSOR

SPECIFICATION SHEET  
TAG \_\_\_\_\_

Dimensional Data (inches or [ mm ]) are Subject to Manufacturing Tolerances and Change Without Notice



R = DEPTH OF STORAGE TANK  
G = WIDTH OF BODY  
STORAGE TANK CAPACITY = 100 GAL [379 L]

Flow Rate GPM[L]Min	Inlet/Outlet Size**	Water Capacity Gal. [L]	App. Wt. Lbs. [Kg]	No. of Covers				
				Trap	Tank			
75[284]	3[75]	65[181]	485[220]	1	1			
Dimensions In Inches								
C	D/E	F	G	J	L	N	Q	R
22 3/4 [578]	18 1/2 [470]	36 [914]	28 5/8 [727]	8 [203]	25 3/4 [654]	26 [660]	28 5/8 [727]	44 1/2 [1130]

**ENGINEERING SPECIFICATION:** ZURN Z1188-107 Large capacity Acid Resistant Coated interior and exterior fabricated steel oil interceptor and integral storage tank with anchor flange, with a fiberglass sensor box containing a float oil level sensor, a fiberglass display box with one green power light, one red oil level light, audible alarm and junction box, bronze cleanout plug and visible double wall trap seal, removable combination pressure equalizing/flow diffusing baffle and sediment bucket, horizontal baffle, adjustable oil drawoff and vent connections. Secured gasketed non-skid heavy duty traffic covers, magnesium anode rod, complete with flow control fitting. Regularly furnished with inlet and outlet in high position.

Note:

1. Power supply 120V GFCI
2. Recommended Installations: Sitting on the floor or recessed in a pit only. (A pit installation requires that a drain or sump pump be installed to keep the pit relatively dry).

**OPTIONS** (Check/specify appropriate options)

**PREFIXES**

— **Z** Acid Resistant Coated Fabricated Steel\*

\*\* Inlet and outlet size shown indicate standard operating size and flow control setting. If changed, flow control and air relief by-pass must be adjusted accordingly.

REV. B	DATE: 02/16/05	C.N. NO. 92964
DWG. NO. P-14682	PRODUCT NO. Z1188-107	

\*REGULARLY FURNISHED UNLESS OTHERWISE SPECIFIED