



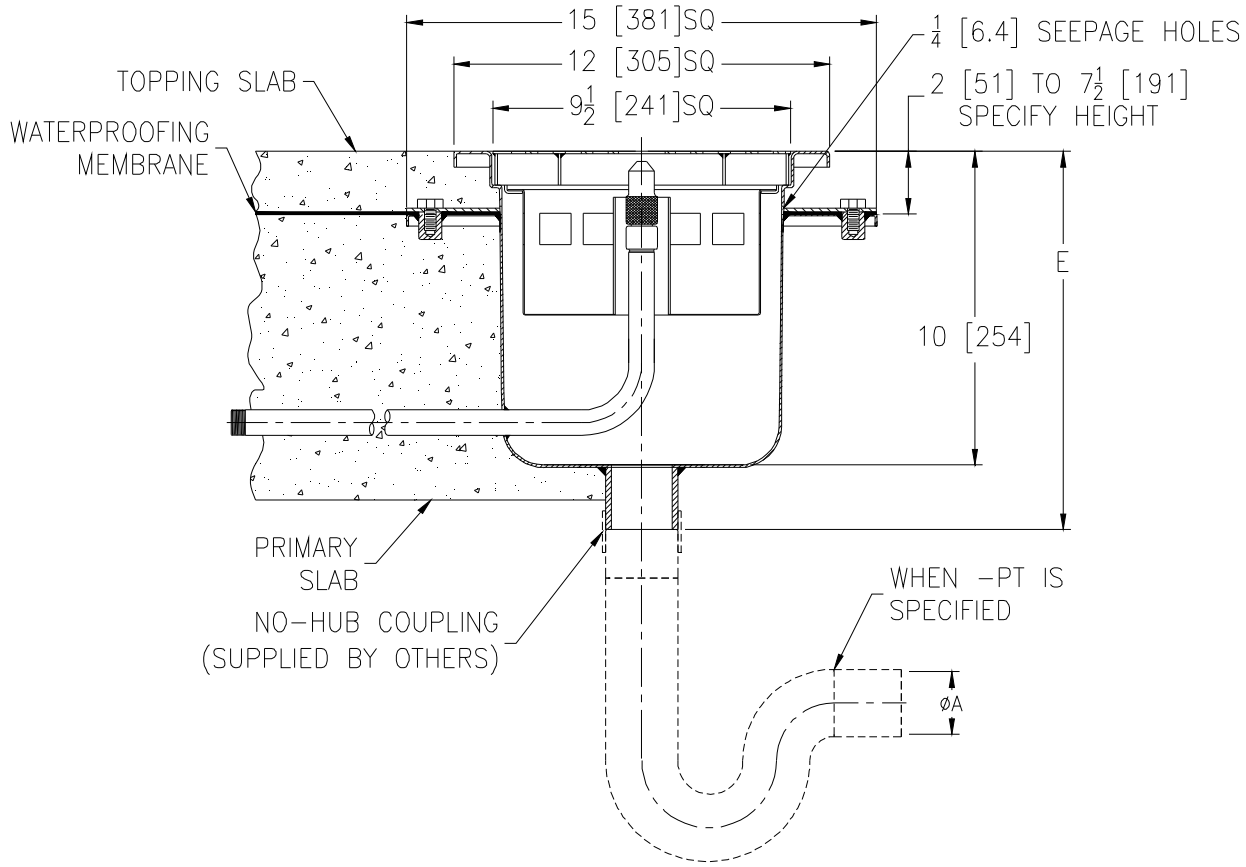
Z1982-77

12 X 12 [305 X 305] STAINLESS STEEL SANI-FLOR CAN WASH DRAIN 10 [254] SUMP DEPTH

SPECIFICATION SHEET

TAG _____

Dimensional Data (inches and [mm]) are Subject to Manufacturing Tolerances and Change Without Notice



A-Pipe Size In. [mm]	Approx. Wt. Lbs. [kg]	Grate Open Area Sq. In. [cm ²]
3, 4 [76, 102]	45 [20]	20 [129]

ENGINEERING SPECIFICATION: ZURN Z1982-77

Sani-Flor Can Wash Drain, 12" x 12" x 10" [305mm x 305mm x 254mm] deep fabricated stainless steel body with bottom outlet, seepage pan & clamp collar, medium-duty stainless steel loose set grate, with standing sediment bucket. Complete with chrome plated bronze spray nozzle and water supply assembly.

OPTIONS (Check/specify appropriate options)

PIPE SIZE

3, 4 [76, 102]

(Specify size/type) OUTLET

___ NH No-Hub

'E' BODY HT. DIMENSION

12 [305]

PREFIXES

___ Z All Type 304 Stainless Steel

SUFFIXES

- ___ -PT Stainless Steel P-Trap
- ___ -WB Water Supply Control Box (See Z1464)
- ___ -11 Vandal-Proof Secured Grate
- ___ -31 Stainless Steel Mesh Liner for Bucket

* Regularly furnished unless otherwise specified.