



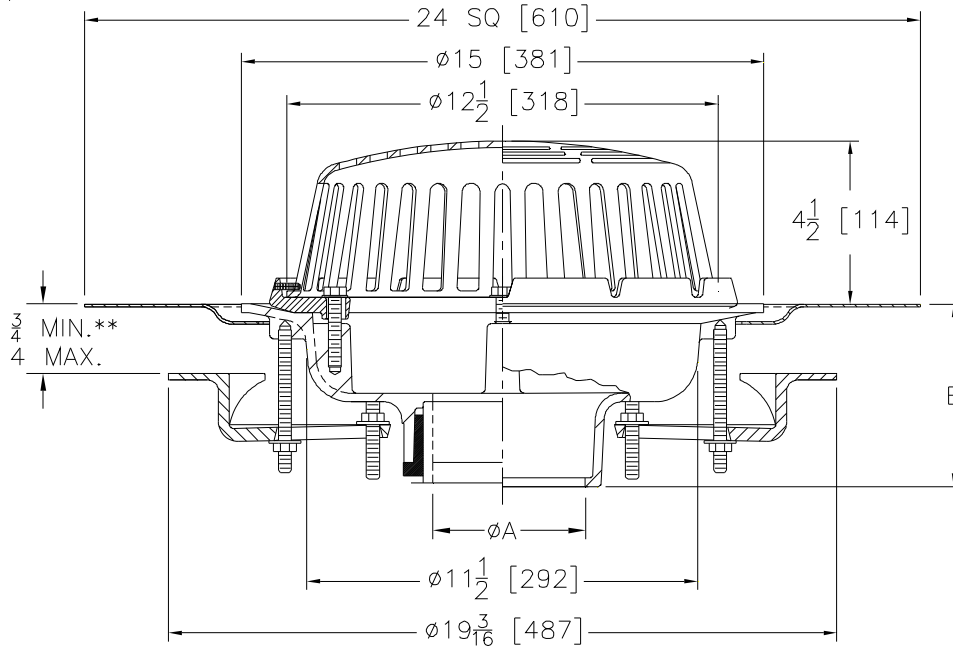
# ZC100-C-R-VP

15 [381] DIAMETER ROOF DRAIN W/ UNDERDECK CLAMP,  
ROOF SUMP RECEIVER & VANDAL-PROOF CAST IRON DOME

SPECIFICATION SHEET

TAG \_\_\_\_\_

Dimensional Data (inches and [ mm ]) are Subject to Manufacturing Tolerances and Change Without Notice



A Pipe Size In. [mm]	Approx. Wt. Lbs. [kg]	Dome Open Area Sq. In. [cm <sup>2</sup> ]
2, 3, 4 [51, 76, 102]	41 [19]	103 [665]
6 [152]	42 [19]	
8 [203]	44 [20]	

### ENGINEERING SPECIFICATION: ZURN ZC100-C-R-VP

15" [381mm] Diameter roof drain. Dura-Coated cast iron body with combination membrane flashing clamp/gravel guard, underdeck clamp, roof sump receiver and vandal-proof secured low silhouette cast iron dome.

**OPTIONS** (Check/specify appropriate options).

**PIPE SIZE** (Specify size)

- 3, 4, 6 [76, 102, 152]
- 2, 3, 4, 6, 8 [51, 76, 102, 152, 203]
- 2, 3, 4, 6, 8 [51, 76, 102, 152, 203]
- 2, 3, 4 [51, 76, 102]
- 6 [152]

(Specify size/type) **OUTLET**

- \_\_\_\_\_ IC Inside Caulk
- \_\_\_\_\_ IP Threaded
- \_\_\_\_\_ NH No-Hub
- \_\_\_\_\_ NL Neo-Loc
- \_\_\_\_\_ NL Neo-Loc

**E BODY HT. DIM.**

- 5-1/4 [133]
- 3-3/4 [95]
- 5-1/4 [133]
- 4-5/8 [117]
- 5-7/16 [138]

**PREFIXES**

- \_\_\_\_\_ ZC D.C.C.I. Body with Cast Iron Dome\*

**SUFFIXES**

- |   |   |
|---|---|
| _____ -AR Acid Resistant Epoxy Coated.  | _____ -ST Dome With Solid Top   |
| _____ -AW 3/4 [19] thru 4 [102] Adjustable Water Level Regulator (Specify Height) | _____ -TC Neo-Loc Test Cap Gasket (2, 3, 4 [51, 76, 102] NL Bottom Outlet Only) |
| _____ -E Static Extension 1 [25] thru 4 [102] (Specify Ht.)                       | _____ -W2 2 [51] Internal Water Dam   |
| _____ -EA Adjustable Extension Assembly 2-1/8 [54] thru 3-1/2 [89]                | _____ -W3 3 [76] Internal Water Dam   |
| _____ -G Galvanized Cast Iron   | _____ -W4 4 [102] Internal Water Dam  |
| _____ -SC Secondary Clamping Collar   | _____ -84 Stainless Steel Perforated Gravel Guard                               |
| _____ -SS Stainless Steel Mesh Screen Over Dome                                   | _____ -85 Stainless Steel Perforated Extension                                  |
|   | _____ -89 2 [51] High External Water Dam  |
|   | _____ -90 90° Threaded Side Outlet Body   |

\* Regularly furnished unless otherwise specified.