



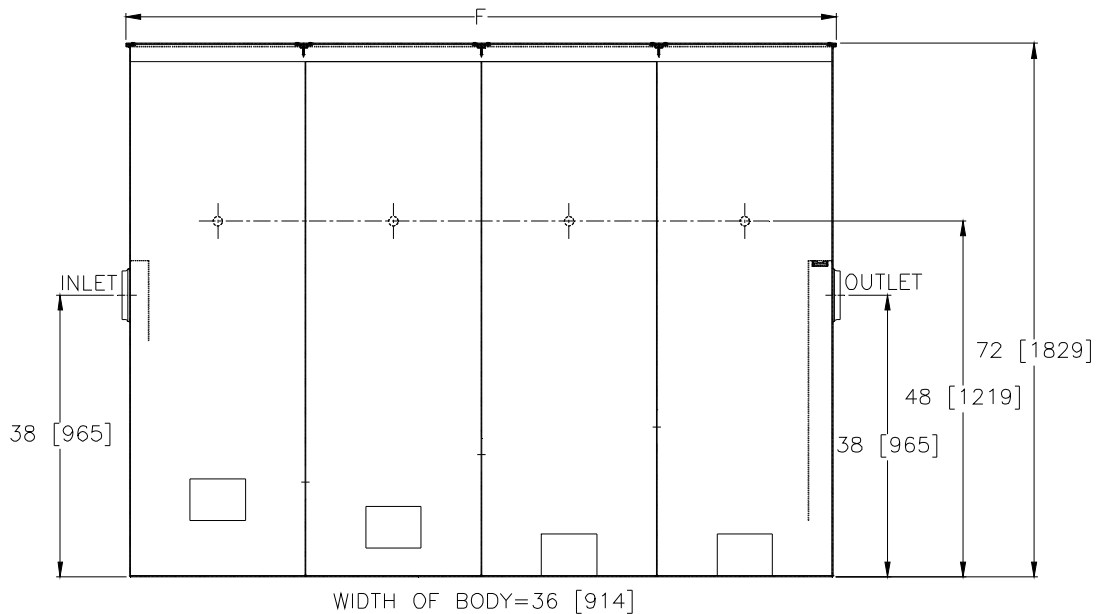
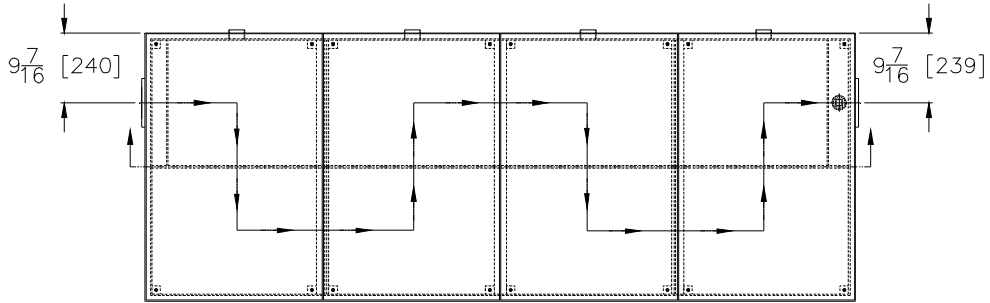
Z1187-86

SPECIFICATION SHEET

HEAVY-DUTY SAND AND SEDIMENT INTERCEPTOR W/ INTEGRAL EXTENSION AND 6[152] CONNECTIONS

TAG _____

Dimensional Data (inches and [mm]) are Subject to Manufacturing Tolerances and Change Without Notice



Size	Cubic Ft. [cm]	Approx. Wt.Lbs. [kg]	F-Dim in Inches
500	72 [2]	2100 [953]	96 [2438]

ENGINEERING SPECIFICATION: ZURNZ1187-86

Acid Resistant Coated fabricated steel sand and sediment separator, _____cu. ft. capacity below invert of outlet, 6 [152] threaded inlet and outlet, four 2 [51] threaded individual vent connections, complete with heavy duty scoriated non-skid gasketed removable cover(s) reinforced for 10,000 lb [4536 kg] maximum safe live load.

OPTIONS (Check/specify appropriate options)

PREFIXES

____ Z Acid Resistant Coated Fabricated Steel*

SUFFIXES

____ -K Anchor flange 1 3/4 [44] down from top and 2 [51] wide.
No extension required to accommodate -K option.

REV.	DATE: 11/19/09	C.N. NO. 110436
DWG. NO. P-15801	PRODUCT NO. Z1187-86	

*REGULARLY FURNISHED UNLESS OTHERWISE SPECIFIED