



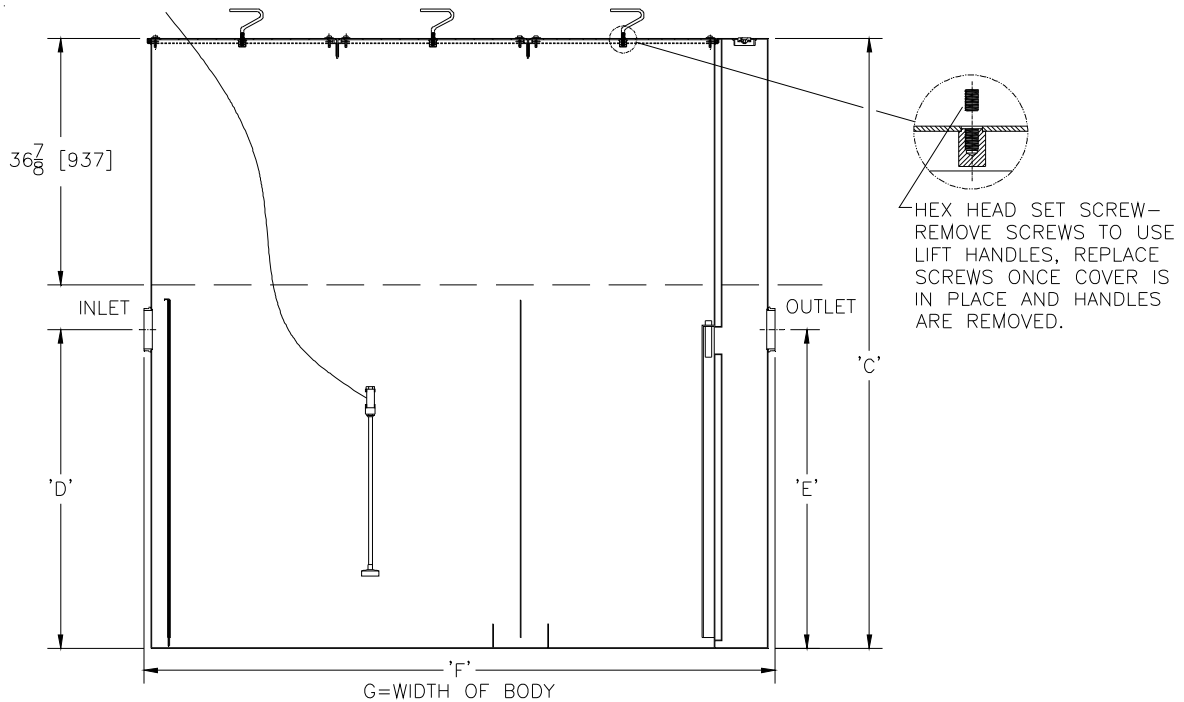
# Z1172-UN-82

LARGE CAPACITY GREASE INTERCEPTOR W/ CUSTOM USER NOTIFICATION SYSTEM, 36-7/8 [937] EXTENSION, AND HEAVY-DUTY COVER

SPECIFICATION SHEET

TAG \_\_\_\_\_

Dimensional Data (inches and [ mm ]) are Subject to Manufacturing Tolerances and Change Without Notice



Size	Inlet/Outlet Size In [mm]	Flow Rate GPM [LPM]	Capacity		Approx. wt. lbs [kg]	Dimensions in Inches [mm]			
			Water gal. [L]	Grease lbs [kg]		C	D/E	F	G
1900	6 [152]	500 [1893]	1440 [5451]	1000 [454]	3000 [1361]	94-1/8 [2391]	51-5/8 [1311]	104 [2642]	74 [1880]

### ENGINEERING SPECIFICATION: ZURN Z1172-UN-82

Large capacity acid resistant coated interior and exterior fabricated steel grease interceptor, rated at 500 gpm [1893 lpm] and 1000 lbs. [454 kg] grease capacity, with internal air relief by-pass, bronze cleanout plug and visible double wall trap seal with removable pressure equalizing/flow diffusing baffle. Gasketed heavy-duty non-skid secured traffic cover rated at 10,000 lbs. [4536 kg] maximum load with removable lift handles, complete with flow control fitting. Comes complete with GREASEwatch Monitoring System that will report analog data from 3 channels (top layer or grease, bottom sludge, and total % solids) every 24 hours. Comes with 36-7/8" [937 mm] extension providing a total unit height of 94" [2388 mm] from the top of the floor to the bottom of the inside of the interceptor.

### OPTIONS (Check/specify appropriate options)

#### PREFIXES

- \_\_\_ Z Acid Resistant Coated Fabricated Steel\*
- \_\_\_ ZS All Type 304 Fabricated Stainless Steel

#### SUFFIXES

- \_\_\_ -AL Aluminum Cover
- \_\_\_ -L Angle type (Z1108-L) flow control device.
- \_\_\_ -PW Plug Wrench

#### Notes:

1. Location of inlet from bottom of interceptor cannot be changed.
2. Size 1900 requires 3 covers.

\* Regularly furnished unless otherwise specified.