



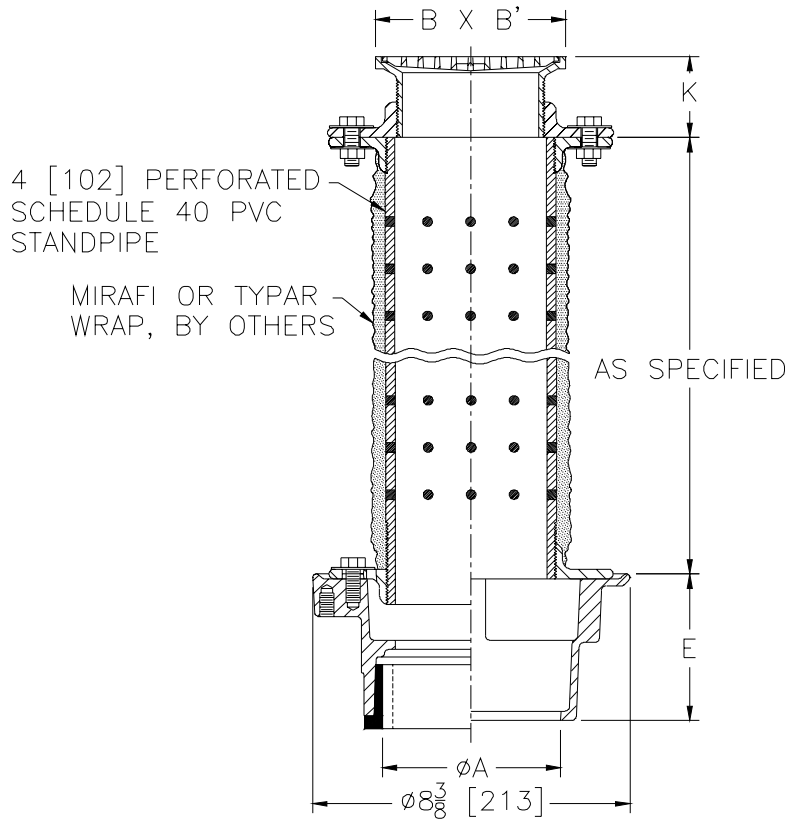
# Z415S-80

## AREA DRAIN W/ "TYPE S" STRAINER & PERFORATED STANDPIPE

SPECIFICATION SHEET

TAG \_\_\_\_\_

Dimensional Data (inches and [ mm ]) are Subject to Manufacturing Tolerances and Change Without Notice



Dimensions In Inches				Approx. Wt. Lbs. [ Kg. ]	Strainer Open Area Sq. In. [ Cm <sup>2</sup> ]
A - Pipe Size	B x B' Strainer Top Size	K			
		Min.	Max.		
3-4 [76-102]	8 x 8 [203 x 203]	2 [51]	3 1/2 [89]	25 [12]	28 [181]

**ENGINEERING SPECIFICATION: ZURN Z415S-80**

Area drain, Dura-Coated cast iron body with bottom outlet, combination invertible membrane clamp, 4 [102] perforated schedule 40 PVC stand pipe and secondary collars with "TYPE S" polished nickel bronze square strainer.

**OPTIONS** (Check/specify appropriate options)

**PIPE SIZE**

- 3 - 4 [76 - 102]
- 3 [76]
- 4 [102]
- 3 - 4 [76 - 102]
- 3 - 4 [76 - 102]

**OUTLET** (Specify size/type)

- \_\_\_\_\_ IC Inside Caulk
- \_\_\_\_\_ IP Threaded
- \_\_\_\_\_ IP Threaded
- \_\_\_\_\_ NH No-Hub
- \_\_\_\_\_ NL Neo-Loc

**'E' BODY HT. DIM.**

- 3 7/8 [98]
- 2 5/8 [67]
- 2 7/8 [73]
- 3 7/8 [98]
- 4 5/8 [117]

**PREFIXES**

- \_\_\_\_\_ ZB D.C.C.I. Body Assembly w/ Polished Bronze Top
- \_\_\_\_\_ ZN D.C.C.I. Body Assembly w/ Polished Nickel Bronze Top\*

**SUFFIXES**

- \_\_\_\_\_ -AR Acid Resisting Epoxy Coated Cast Iron
- \_\_\_\_\_ -CP Chrome-Plated Bronze Top
- \_\_\_\_\_ -DP Decorative Polished Top
- \_\_\_\_\_ -G Galvanized Cast Iron
- \_\_\_\_\_ -P Primer Connection (Specify 1/2 [13] or 3/4 [19])
- \_\_\_\_\_ -PD Prom Deck Grate - Decorative Slots (8 x 8 [203 x 203] Only)
- \_\_\_\_\_ -U 1 - 3 [25 - 76] High Extension Adapter
- \_\_\_\_\_ -TC Neo-Loc Test Cap Gasket (2 - 4 [51 - 102] NL Bottom Outlet Only)
- \_\_\_\_\_ -V Backwater Valve
- \_\_\_\_\_ -VP Vandal-Proof Secured Top
- \_\_\_\_\_ -Y Sediment Bucket

<b>REV. B</b>	<b>DATE: 03/08/04</b>	<b>C.N. NO. 92006</b>
<b>DWG. NO. P-14387</b>	<b>PRODUCT NO. Z415S-80</b>	

\*REGULARLY FURNISHED UNLESS OTHERWISE SPECIFIED