



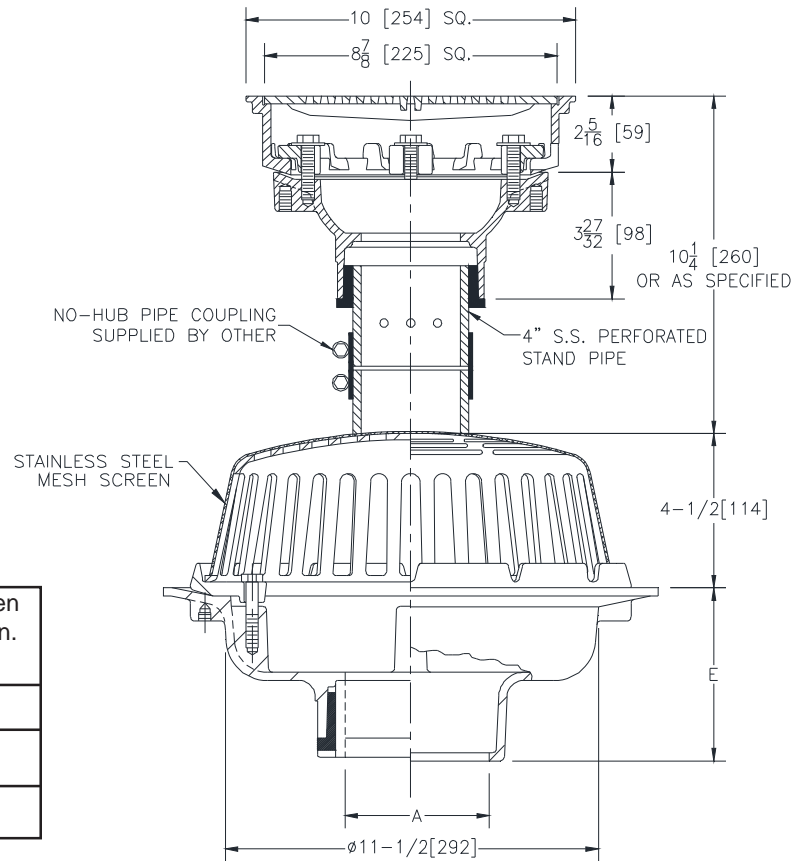
Z100-322

15 [381] DIAMETER MAIN ROOF DRAIN WITH 10 [254] PROM DECK DRAIN & PERFORATED STAINLESS STEEL PERFORATED STANDPIPE

SPECIFICATION SHEET

TAG _____

Dimensional Data (inches and [mm]) are Subject to Manufacturing Tolerances and Change Without Notice



A- Pipe Size In. [mm]	Approx. Wt. Lbs. [kg]	Grate Open Area Sq. In. [sq. cm]	Dome Open Area Sq. In. [sq. cm]
2,3,4 [51,76,102]	49 [22]	21 [135]	103 [665]
5,6 [127,152]	50 [23]	21 [135]	103 [665]
8 [203]	51 [23]	21 [135]	103 [665]

ENGINEERING SPECIFICATION: Z100-322

15" [381mm] Diameter Roof Drain Dura-Coated cast iron body with combination membrane flashing clamp/gravel guard, low silhouette cast iron dome with stainless steel mesh screen. Upper body consists of 10" [254mm] Prom-Deck drain, Dura-Coated cast iron body with rotatable square promenade frame with seepage openings and light duty heel-proof grate, and combination membrane flashing clamp/gravel guard. Complete with stainless steel perforated stand pipe.

OPTIONS (Check/specify appropriate options)

PIPE SIZE	(Specify size/type)	OUTLET	'E' BODY HT. DIM.
2,3,4,5,6,8 [51,76,102,127,152,203]	_____	IC Inside Caulk	5-1/4 [133]
2,3,4,5,6,8 [51,76,102,127,152,203]	_____	IP Threaded	3-3/4 [95]
2,3,4,5,6,8 [51,76,102,127,152,203]	_____	NH No-Hub	5-1/4 [133]
2,3,4 [51,76,102]	_____	NL Neo-Loc	4-9/16 [116]
6 [152]	_____	NL Neo-Loc	5-7/16 [112]

PREFIXES

- _____ ZB D.C.C.I. Body Assembly w/Polished Bronze Top
- _____ ZN D.C.C.I. Body Assembly w/Polished Nickel Bronze Top*

TOP DRAIN SUFFIXES

- _____ -DG Duresist Grate
- _____ -E 2 [51] High Static Extension
- _____ -TS Top Secured with Slotted Screws
- _____ -VP Vandal-Proof SEcured Top
- _____ -XJ Vertical Expansion Joint (See Z190)
- _____ -Y Sediment Bucket
- _____ -85 Stainless Steel Perforated Extension

BOTTOM DRAIN SUFFIXES

- _____ -AR Acid Resistant Epoxy Coated
- _____ -C Underdeck Clamp (Lower Body)
- _____ -DP Top-Set® Deck Plate (Replaces both the -C and -R, Lower Body)
- _____ -R Roof Sump Receiver (Lower Body)

* Regularly furnished unless otherwise specified.