



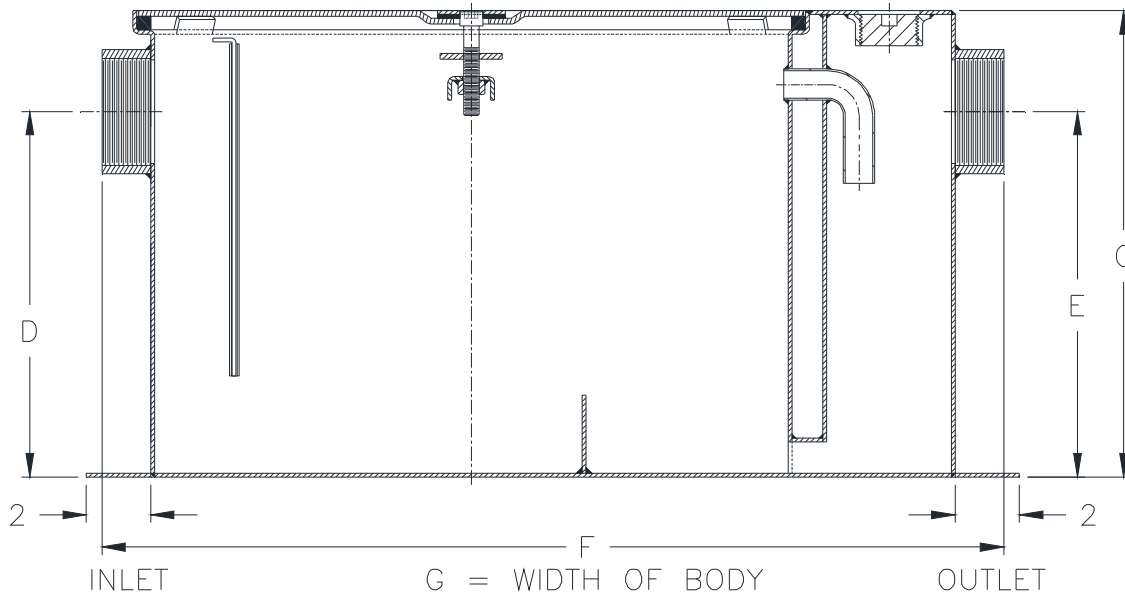
Z1170-160

GREASE INTERCEPTOR W/ BOTTOM-MOUNTED ANCHOR FLANGE

SPECIFICATION SHEET

TAG _____

Dimensional Data (inches and [mm]) are Subject to Manufacturing Tolerances and Change Without Notice



Size	Inlet/Outlet Size*	Flow Rate GPM. [L]	Capacity		Approx. Wt. Lbs. [kg]	Dimensions in Inches [mm]			
			Water Gal. [LPM]	Grease Lbs. [kg]		C	D/E	F	G
100	2 [51]	4 [15]	3 [11]	8 [4]	42 [19]	10 [254]	7-1/4 [184]	20-3/8 [518]	9-7/8 [251]
200		7 [26]	5 [19]	14 [6]	53 [24]	11-1/4 [286]	8-1/8 [206]	21-3/4 [552]	11-7/8 [302]
300		10 [38]	6 [23]	20 [9]	66 [30]	11-3/4 [298]	8-1/4 [210]	25-1/8 [638]	14 [356]
400	3 [76]	15 [57]	10 [38]	30 [14]	83 [38]	13-3/8 [340]	9-3/8 [238]	27-1/8 [689]	16-3/4 [425]
500		20 [76]	16 [60]	40 [18]	99 [45]	15 [381]	11-3/4 [298]	30 [762]	17-1/4 [438]
600		25 [94]	21 [79]	50 [23]	124 [56]	17 [432]	12-1/2 [318]	32-1/4 [819]	19-7/8 [505]
700		35 [132]	30 [113]	70 [32]	151 [68]	18-3/4 [476]	14-1/4 [362]	34-1/8 [867]	22-1/2 [572]
800		50 [189]	40 [151]	100 [45]	180 [82]	21-1/2 [546]	16 [406]	36 [914]	24-1/2 [622]

ENGINEERING SPECIFICATION: ZURN Z1170-160

Acid Resistant Coated interior and exterior fabricated steel grease interceptor, PDI, rated at _____ GPM and _____ Lbs. grease capacity, with internal air relief by-pass, bronze cleanout plug, removable pressure equalizing/flow diffusing inlet baffle, fixed bottom outlet baffle, and visible double wall trap seal. Gasketed non-skid secured cover complete with center tie down assembly, with Z1108 flow control fitting, complete with 2" [51] wide anchor flange welded to base of interceptor. Regularly furnished with a high inlet and outlet connection. Note: Location of outlet from bottom of interceptor cannot be changed.

PREFIXES

- ___ Z Acid Resistant Coated Fabricated Steel*
- ___ ZS All Type 304 Fabricated Stainless Steel

SUFFIXES

- ___ -AL Aluminum Cover
- ___ -DI Dual High/Low Inlet.
- ___ -E Acid Resistant Coated Interior and exterior integral fabricated steel extension section. (Specify 'C' Dim. re quired) for recessed installation.
- ___ -ER Acid Resistant Coated Interior and exterior fabricated retrofit steel extension.
- ___ -HD Heavy Duty Cover rated at 10,000 lbs. maximum safe live load. A 3 [76] minimum extension height is required when Heavy Duty Cover (-HD) option is specified.
- ___ -L Angle type (Z1108-L) flow control device with plunger.
- ___ -T Cover recessed for tile/terrazzo. A 3 [76] minimum extension height is required. (Specify recess depth-1/8 [3], 3/4 [19], or 1 1/4 [32]).

* Regularly furnished unless otherwise specified.