



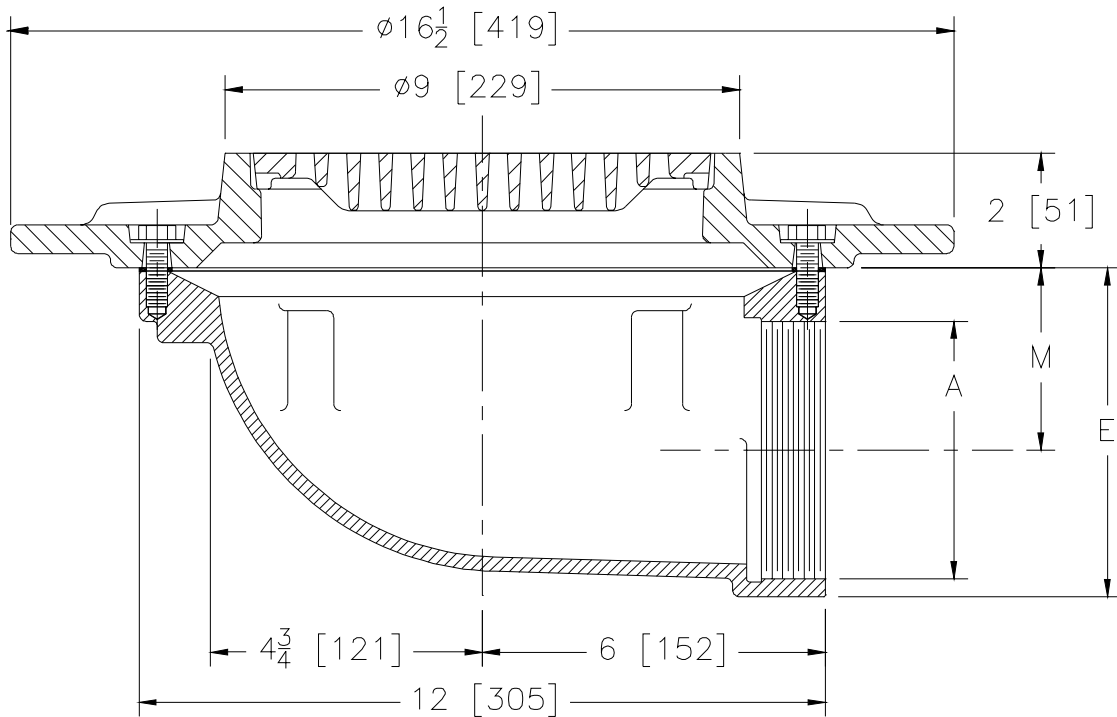
# Z533-76

## 9 [229] DIAMETER HEAVY-DUTY PARKING DECK DRAIN WITH SIDE OUTLET AND SUPPORT FLANGE

SPECIFICATION SHEET

TAG \_\_\_\_\_

Dimensional Data (inches and [ mm ]) are Subject to Manufacturing Tolerances and Change Without Notice



Dimension In Inches		Approx. Wt. Lbs. [Kg.]	Grate Open Area Sq. In. [Cm <sup>2</sup> ]
A Pipe Size	M		
2 [51]	4 1/8 [108]	57 [26]	16 [103]
3 [76]	3 5/8 [94]	56 [25]	
4 [102]	3 1/8 [81]	54 [25]	

**ENGINEERING SPECIFICATION: ZURN Z533-76**  
9 [229] Diameter Parking Deck Drain, Dura-Coated cast iron body with side outlet, heavy-duty gasketed drain support flange, with heavy-duty Duresist slotted grate.

**OPTIONS** (Check/specify appropriate options)

**PIPE SIZE**

2 thru 4 [51 thru 102]

(Specify size/type) **OUTLET**

\_\_\_ IP Threaded

**'E' BODY HT. DIM.**

5 3/4 [133]

**PREFIXES**

- \_\_\_ Z D.C.C.I. Body and Top\*
- \_\_\_ ZB D.C.C.I. Body with Polished Bronze Top (Add 3/16 [5] to 2 [51] Dim.)
- \_\_\_ ZN D.C.C.I. Body with Polished Nickel Bronze Top (Add 3/16 [5] to 2 [51] Dim.)

**SUFFIXES**

- \_\_\_ -C Underdeck Clamp
- \_\_\_ -G Galvanized Cast Iron
- \_\_\_ -TS Top Secured with Slotted Screws
- \_\_\_ -VP Vandal-Proof Secured Top

\*REGULARLY FURNISHED UNLESS OTHERWISE SPECIFIED

REV.	DATE: 1/10/05	C.N. NO. 92826
DWG. NO. P-15115	PRODUCT NO. Z533-76	