

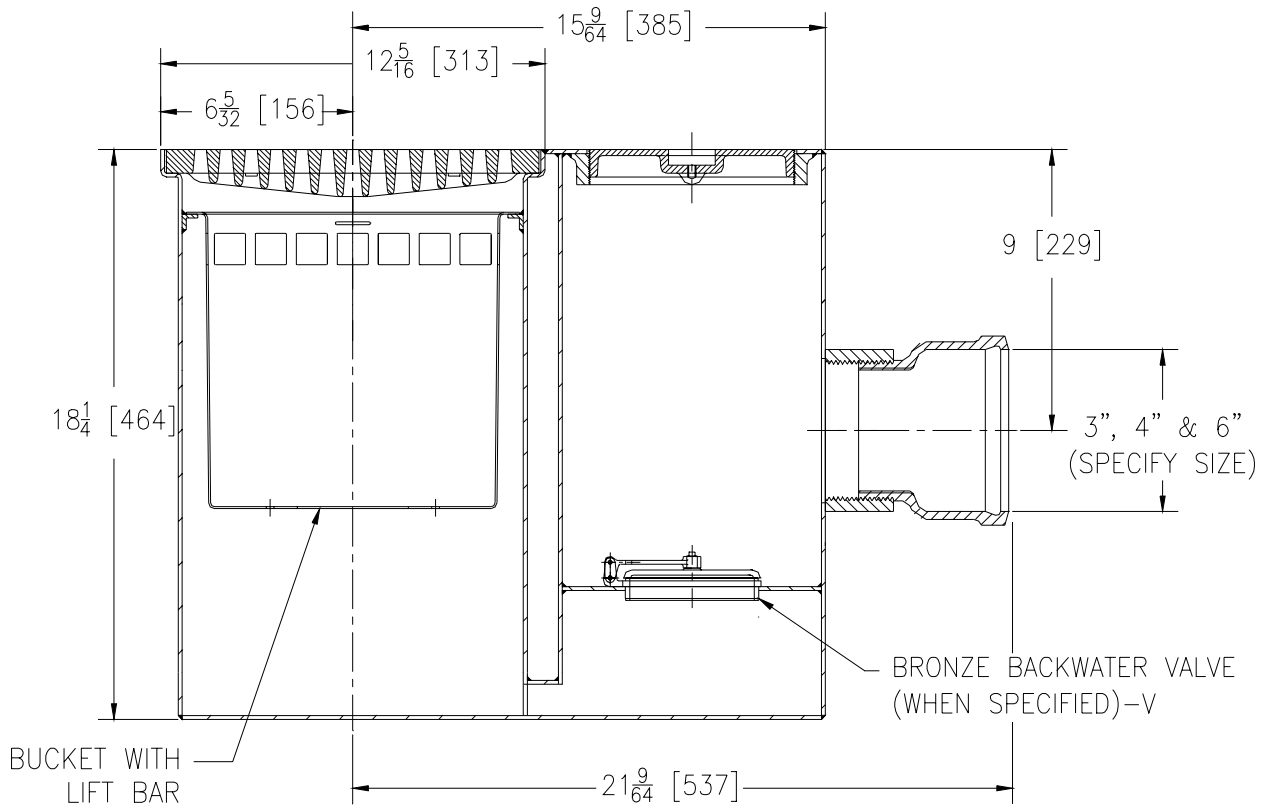


Z-1189-79 HEAVY DUTY GARAGE DRAIN

SPECIFICATION SHEET

TAG _____

Dimensional Data (inches and [mm]) are Subject to Manufacturing Tolerances and Change Without Notice



ENGINEERING SPECIFICATION: ZURN Z-1189-79 Dura-Coated fabricated steel body, interior and exterior with heavy duty Dura-Coated cast iron grate, visible double-wall outside trap seal, sediment bucket

PREFIXES

- ___ Z- Dura-Coated Fabricated Steel*
- ___ ZN- Dura-Coated Fabricated Steel Body Polished Nickel Bronze Top.

SUFFIXES

- ___ -AR Acid Resistant Coated fabricated steel finish interior and exterior.
- ___ -K Anchor flange 1 3/4 [44] down from top and 2 [51] wide.
- ___ -KC Anchor flange 1 3/4 [44] down from top and 2 [51] wide with seepage holes and clamp collar.
- ___ -V Backwater Valve

REV.	DATE: 12/10/97	C.N. NO. 79354
DWG. NO. P-14580 PRODUCT NO. Z-1189-79		

*REGULARLY FURNISHED UNLESS OTHERWISE SPECIFIED