



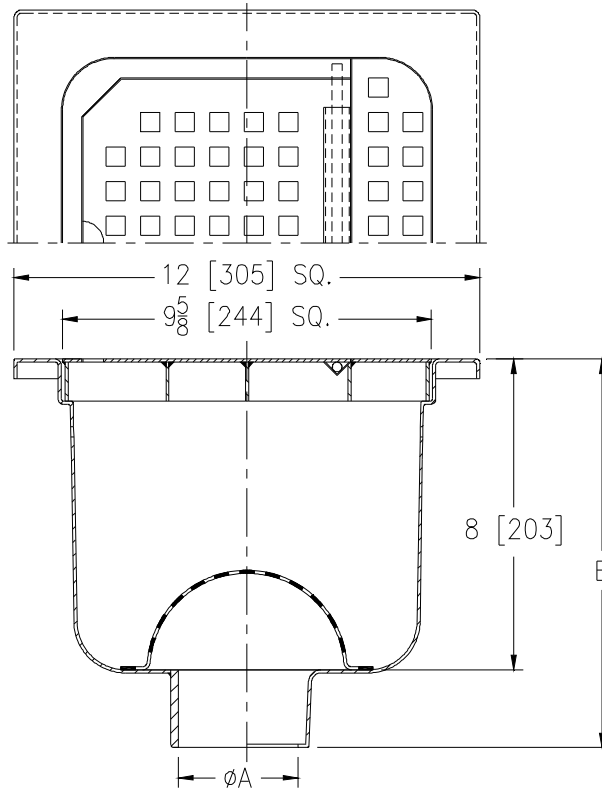
Z1751-19

12 X 12 [305 X 305] SANI-FLOR RECEPTOR
W/ 8 [203] SUMP DEPTH & FULL HINGED GRATE

SPECIFICATION SHEET

TAG _____

Dimensional Data (inches and [mm]) are Subject to Manufacturing Tolerances and Change Without Notice



A Pipe Size In. [mm]	Approx. Wt. Lbs. [kg]	Grate Open Area Sq. In. [cm ²]
2,3,4 [51,76,102]	19 [9]	8 [52]
6 [152]	21 [9]	8 [52]

ENGINEERING SPECIFICATION: ZURNZ1751-19

12" x 12" x 8" [305mm x 305mm x 203mm] deep, 16 gage, all Type 304 (CF8) Stainless Steel light-duty Sani-Flor receptor with non-tilt, loose set full hinged grate with 1/2" [13mm] square openings and anti-splash interior dome strainer.

OPTIONS (Check/specify appropriate options)

PIPE SIZE

3,4 [76,102]
2,3,4,6 [51,76,102,152]
2,3,4 [51,76,102]

(Specify size/type) OUTLET

_____ IC Inside Caulk
_____ NH No-Hub
_____ NL Neo-Loc

'E' BODY HT. DIM.

10-9/16 [268]
10-1/16 [256]
9-13/16 [249]

PREFIXES

_____ Z Type 304 (CF8) Stainless Steel Body*
_____ ZM Type 316 (CF8M) Stainless Steel

SUFFIXES

_____ -DX Dex-o-tex Flange
_____ -K Anchor Flange w/ Seepage Holes
_____ -KC Anchor Flange w/ Seepage Holes and Clamp Collar
_____ -P 1/2 [13] Trap Primer Connection
_____ -TC Neo-Loc Test Cap Gasket (2,3,4 [51,76,102] NL Bottom Outlet Only)
_____ -VP Vandal-Proof Secured Top
_____ -Y Sediment Bucket

* Regularly furnished unless otherwise specified.