

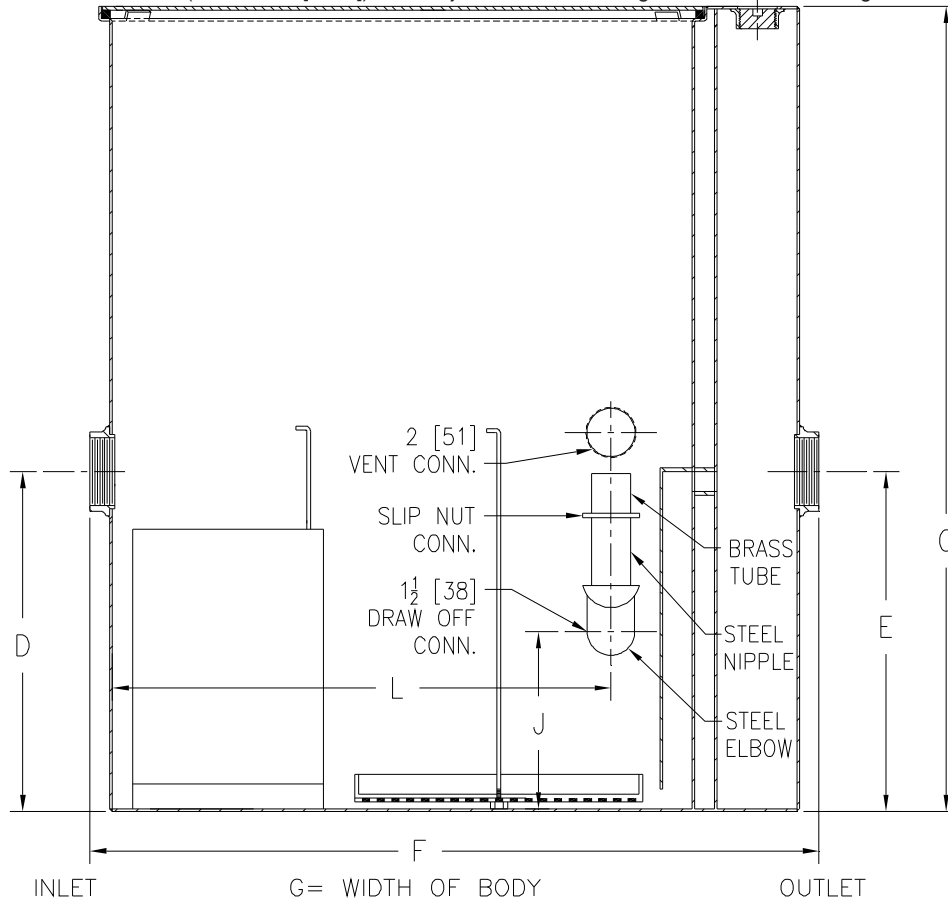


Z1188-171
LARGE CAPACITY OIL INTERCEPTOR W/
44-3/8 [1127] INTEGRAL EXTENSION

SPECIFICATION SHEET

TAG _____

Dimensional Data (inches and [mm]) are Subject to Manufacturing Tolerances and Change Without Notice



Flow Rate GPM [L] Min	Inlet/ Outlet Size	Water Capacity Gal. [L]	Approx. Wt. Lbs. [kg]	No. of Covers	Dimensions in Inches					
					C	D/E	F	G	J	L
200	6 [152]	265 [1003]	1055 [479]	2	79-7/8 [2029]	31-7/8 [810]	61 [1549]	43-5/8 [1108]	17 [432]	46-5/8 [1184]

ENGINEERING SPECIFICATION: ZURN Z1188-171

Large capacity Acid Resistant Coated interior and exterior fabricated steel oil interceptor with integral extension, bronze cleanout plug and visible double wall trap seal, removable combination pressure equalizing/flow diffusing baffle and sediment bucket, horizontal baffle, adjustable oil draw-off and vent connections either side. Secured gasketed non-skid cover complete with flow control fitting. Regularly furnished with inlet and outlet in high position.

OPTIONS (Check/specify appropriate options)

PREFIXES

___ Z Acid Resistant Coated Fabricated Steel*

SUFFIXES

- ___ -HD Heavy-duty traffic cover rated at 10,000 lbs [4536] kg. maximum safe live load.
- ___ -K Anchor flange 1 3/4 [44] down from top and 2 [51] wide.
- ___ -KC Anchor flange 1 3/4 [44] down from top and 2 [51] wide with clamp collar.

* Regularly furnished unless otherwise specified.