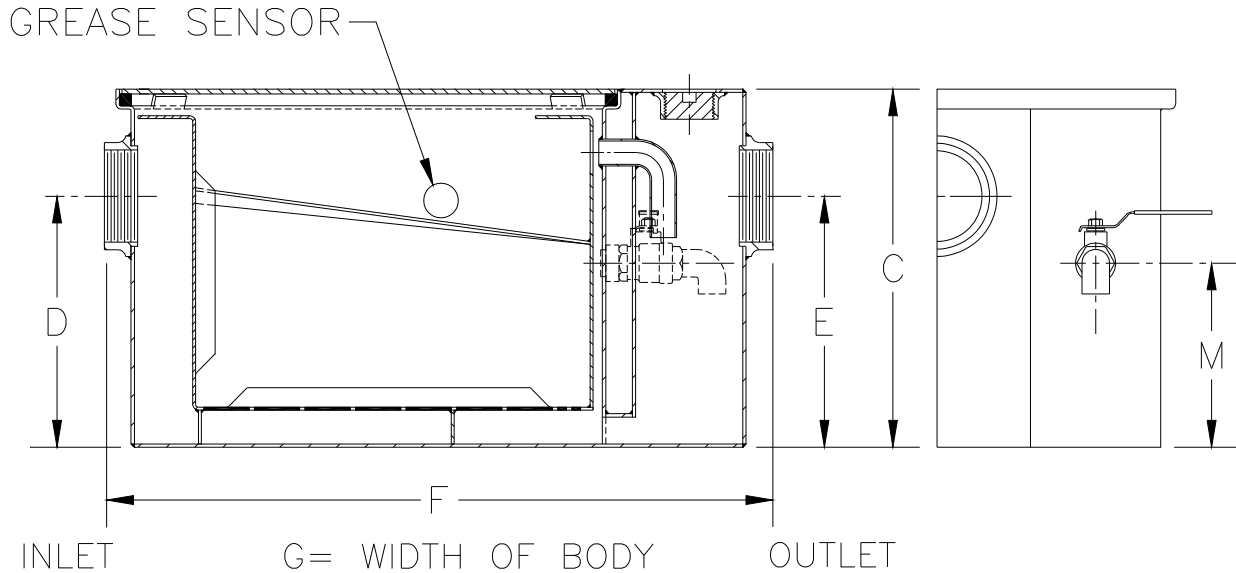




# Z-1173-88

## EJECTO-MATIC GREASEPTOR

Dimensional Data (inches and [ mm ]) are Subject to Manufacturing Tolerances and Change Without Notice



Size	Inlet/ Outlet Size**	Flow Rate G.P.M. [L]	Capacity		Approx. Wt. Lbs. [kg]	Dimensions in Inches				M C/L Valve
			Water Gal. [L]	Grease Lbs. [kg]		C	D/E	F	G	
200	2 [50]	7 [26]	5 [19]	14 [6]	56 [25]	11 1/4 [286]	8 1/8 [206]	20 3/8 [518]	11 7/8 [302]	6 1/8 [156]
300		10 [38]	6 [23]	20 [9]	70 [32]	11 3/4 [298]	8 1/4 [210]	22 5/8 [575]	14 [356]	5 3/4 [146]
400	3 [75]	15 [57]	10 [38]	30 [14]	87 [39]	13 3/8 [340]	9 3/8 [238]	24 5/8 [625]	16 3/4 [425]	6 7/8 [175]
500		20 [76]	16 [60]	40 [18]	104 [47]	15 [381]	11 3/4 [298]	27 1/2 [698]	17 1/4 [438]	9 1/4 [235]
600		25 [94]	21 [79]	50 [23]	129 [59]	17 [432]	12 1/2 [318]	29 7/8 [759]	19 7/8 [505]	9 1/2 [241]
700		35 [132]	30 [113]	70 [32]	156 [71]	18 3/4 [476]	14 1/4 [362]	31 3/4 [806]	22 1/2 [572]	11 1/4 [286]
800		50 [189]	40 [151]	100 [45]	186 [84]	21 1/2 [546]	16 [406]	33 5/8 [854]	24 1/2 [622]	13 [330]
900		75 [284]	65 [246]	150 [68]	316 [143]	22 3/4 [578]	18 1/2 [470]	36 [914]	28 5/8 [727]	15 1/2 [394]

**ENGINEERING SPECIFICATION:** ZURN Z-1173 Acid Resistant Coated interior and exterior fabricated grease interceptor, rated at \_\_\_\_\_ GPM and \_\_\_\_\_ Lbs. grease capacity, with non-coating grease sensor, internal air relief by-pass, bronze cleanout plug and visible double wall trap seal with removable combination pressure equalizing/flow diffusing baffle and sediment tray and grease retention tray adjacent to grease draw-off valve. Gasketed non-skid secured cover, complete with Z-1108 flow control fitting. Regularly furnished with high inlet and outlet connections.

**PREFIXES**

\_\_\_\_\_ Z- Acid Resistant Coated Fabricated Steel\*

**SUFFIXES**

- \_\_\_\_\_ -L Angle type (Z-1108-L) flow control device.
- \_\_\_\_\_ -R Recessing receiver for recessed installation is equipped with adjustable support brackets and gasketed non-skid cover with covered recessed lift handle.
- \_\_\_\_\_ -RE Recessing receiver enclosed type for recessed installation. Furnished with adjustable support brackets and gasketed lift handle.

\*\* Inlet and outlet sizes shown indicate standard operating sizes and flow control settings. Size #700 thru #900 will have 4 [100] connections reduced to 3 [75] as standard. If changed, flow control and air relief by-pass must be adjusted accordingly.

- NOTE: 1. Location of outlet from bottom of interceptor cannot be changed. Draw-off connection regularly furnished on outlet side.  
 2. On sizes 200 & 300 only draw-off on lefthand side when facing inlet.

REV.	DATE: 3/5/97	C.N. NO. 77636
DWG. NO. P-14438 PRODUCT NO. Z-1173-88		

\*REGULARLY FURNISHED UNLESS OTHERWISE SPECIFIED