



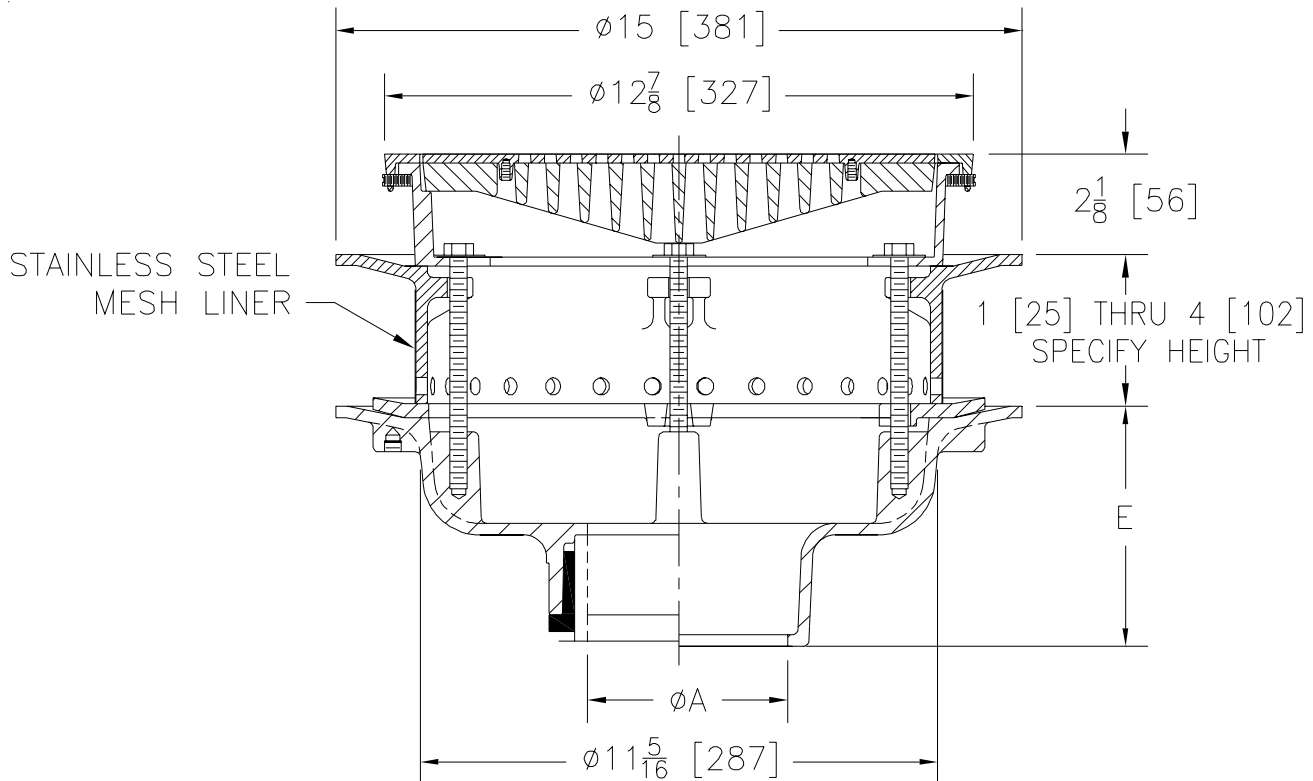
ZN541-115

SPECIFICATION SHEET

12 [305] DIAMETER HEAVY DUTY DRAIN W/ EXTENSION, MESH LINER AND HEEL-PROOF GRATE

TAG _____

Dimensional Data (inches and [mm]) are Subject to Manufacturing Tolerances and Change Without Notice



A- Pipe Size In.	Approx. Wt. Lbs. [kg]	Grate Open Area Sq. In. [cm ²]
2,3,4,5,6 [51,76,102,127,152]	52 [24]	29 [187]
8,10 [203,254]	54 [24]	

ENGINEERING SPECIFICATION: ZURN ZN541-115
 12 [305] Diameter top drain. Dura-Coated cast iron body with bottom outlet, secondary clamp collar, extension frame with (30) 3/8 [10] dia. seepage holes, stainless steel mesh liner, seepage pan and combination membrane flashing clamp and frame for anti-tilt heavy duty slotted grate with polished nickel bronze frame and heel-proof grate.

OPTIONS (Check/specify appropriate options)

PIPE SIZE	(Specify size/type)	OUTLET	'E' BODY HT. DIM.
2 thru 6, 8, 10 [51 thru 152, 203, 254]	_____	IC Inside Caulk	5 1/4 [133]
2 thru 6, 8, 10 [51 thru 152, 203, 254]	_____	IG Inside Caulk w/ Sealrol Gskt.	5 1/4 [133]
2 thru 6, 8, 10 [51 thru 152, 203, 254]	_____	IP Threaded	3 3/4 [95]
2 thru 6, 8, 10 [51 thru 152, 203, 254]	_____	NH No-Hub	5 1/4 [133]
2 thru 4 [51 thru 102]	_____	NL Neo-Loc	4 5/8 [117]

PREFIXES

_____ ZN D.C.C.I. Body with Polished Nickel Bronze Top*

SUFFIXES

_____ -AR Acid Resisting Epoxy Coated Cast Iron
 _____ -G Galvanized Cast Iron
 _____ -H Hinged Grate

REV. A	DATE: 04/11/06	C.N. NO. 95021
DWG. NO. P-15003 PRODUCT NO. ZN541-115		

*REGULARLY FURNISHED UNLESS OTHERWISE SPECIFIED