



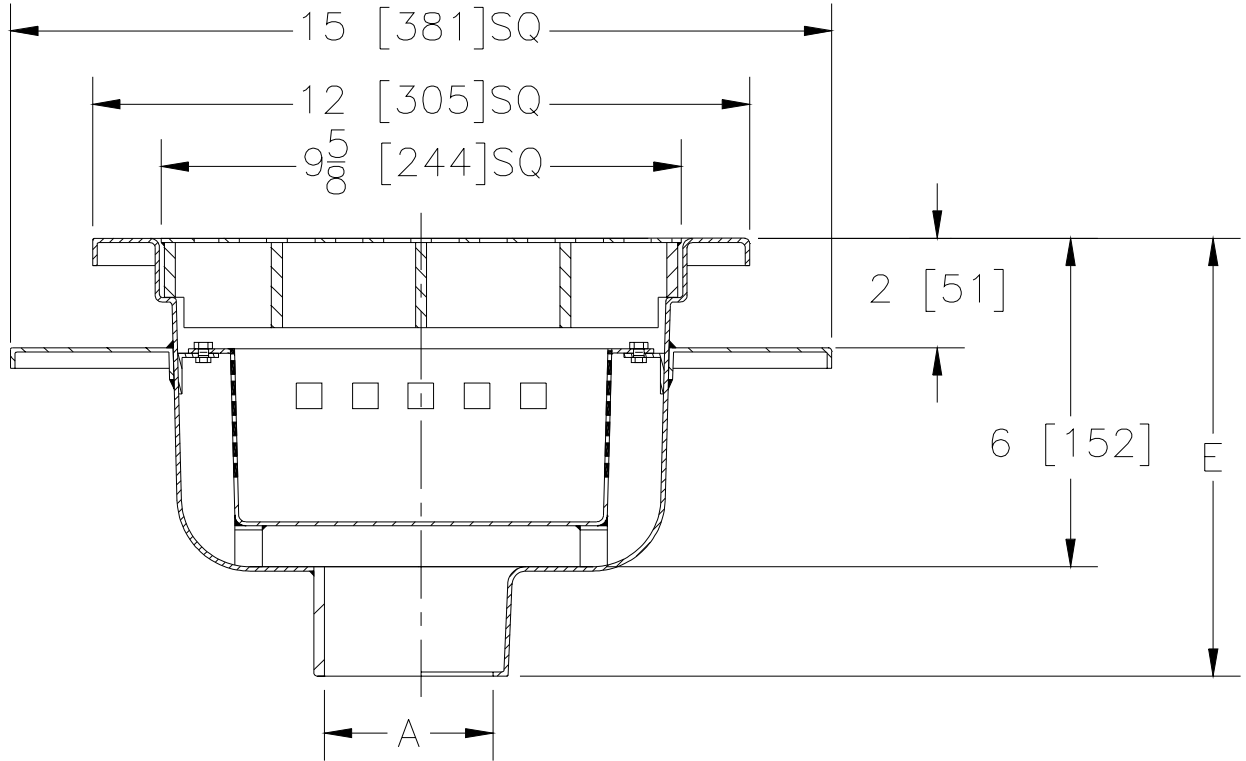
Z-1750-120

SPECIFICATION SHEET

12[305] x 12[305] SANI-FLOR RECEPTOR 6[152] Sump Depth

TAG _____

Dimensional Data (inches and [mm]) are Subject to Manufacturing Tolerances and Change Without Notice



A Pipe Size In.	Approx. Wt. Lbs.	Grate Open Area Sq. In.
2[50]-3[75]- 4[100]	18[9]	23[148]

ENGINEERING SPECIFICATION: ZURN Z-1750-120

12[305]x12[305]x6[152] deep, 14 gage, All Type 304 (CF8) Stainless Steel light duty Sani-Flor receptor with anchor flange, non-tilt, loose set heavy duty grate with 1/2[13] square openings and secured sediment bucket.

OPTIONS (Check/specify appropriate options)

PIPE SIZE

2[50] thru 4[100]
2[50]
3[75]
4[100]
2[50] thru 4[100]
2[50] thru 4[100]

(Specify size/type) OUTLET

___ IC Inside Caulk
___ IP Threaded
___ IP Threaded
___ IP Threaded
___ NH No-Hub
___ NL Neo-Loc

'E' BODY HT. DIM.

8 9/16[217]
7 5/16[186]
7 9/16[192]
8 1/16[204]
8 1/16[204]
7 13/16[198]

PREFIXES

___ Z- Type 304 (CF8) Stainless Steel Body*
___ ZM- Type 316 (CF8M) Stainless Steel

SUFFIXES

___ -KC	Seepage Pan with Clamp Collar	___ -15	Solid Cover
___ -P	1/2[13] Trap Primer Connection	___ -16	1/2 Solid Cover
___ -1	(Less) Grate	___ -17	3/4 Solid Cover
___ -2	1/2 Grate	___ -18	Solid Cover With 3[75] Square Center Opening
___ -3	3/4 Grate		
___ -4	Full Grate With 3 Square Opening		
___ -5	Grate w/4[100] dia. x 3 3/4[95] High Funnel		
___ -8	Grate w/8 3/8[213] x 3 5/8[92] x 3 3/4[95] High Oval Funnel		

REV. DATE: 9/20/00 C.N. NO. 85883

DWG. NO. P-14798 PRODUCT NO. Z-1750-120

*REGULARLY FURNISHED UNLESS OTHERWISE SPECIFIED