



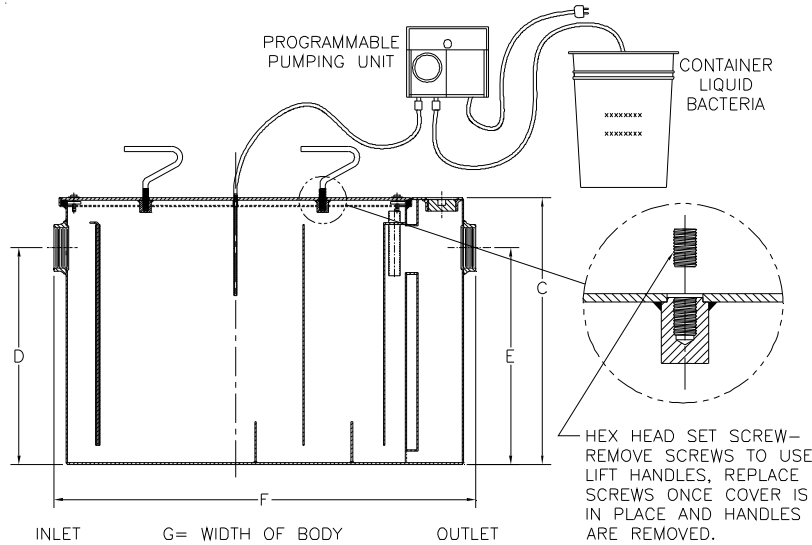
# Z1172-116

## LARGE CAPACITY GREASE INTERCEPTOR WITH GREASE EATING BACTERIA DOSING UNIT

SPECIFICATION SHEET

TAG \_\_\_\_\_

Dimensional Data (inches and [ mm ]) are Subject to Manufacturing Tolerances and Change Without Notice



Size	Inlet/Outlet Size**	Flow Rate G.P.M. [L]	Capacity		No. of Covers	Approx. Wt. Lbs. [kg]	Dimensions in Inches			
			Water Gal. [L]	Grease Lbs. [kg]			C	D/E	F	G
900	3 [76]	75 [284]	65 [246]	150 [68]	1	316 [143]	22 3/4 [578]	18 1/2 [470]	36 [914]	28 5/8 [727]
1000		100 [378]	110 [416]	200 [91]		408 [185]	27 [686]	23 [584]	42 3/4 [1086]	33 5/8 [854]
1100		125 [472]	150 [567]	250 [114]		749 [340]	30 1/8 [765]	24 1/2 [622]	49 1/4 [1251]	40 [1016]
1200	4 [102]	150 [567]	195 [737]	300 [136]	2	856 [389]	30 3/4 [781]	25 1/4 [641]	56 [1422]	41 5/8 [1057]
1300		200 [756]	270 [1021]	400 [182]		1016 [461]	35 1/2 [902]	29 7/8 [759]	61 [1549]	43 5/8 [1108]
1400	5 [127]	250 [945]	465 [1758]	500 [227]	2	1384 [628]	41 [1041]	36 [914]	71 [1803]	51 5/8 [1311]
1500		300 [1134]	665 [2514]	600 [272]		1770 [804]	46 1/4 [1175]	39 5/8 [1006]	80 [2032]	58 5/8 [1489]
1600	6 [152]	350 [1323]	865 [3278]	700 [318]	3	2096 [951]	50 1/2 [1283]	43 7/8 [1114]	87 [2210]	63 5/8 [1616]
1700		400 [1512]	1095 [4139]	800 [363]		2440 [1108]	54 1/4 [1378]	47 5/8 [1210]	94 [2388]	67 [1702]
1800		450 [1701]	1280 [4838]	900 [409]		2710 [1230]	55 1/4 [1403]	48 5/8 [1235]	100 [2540]	72 [1829]
1900		500 [1890]	1440 [5443]	1000 [454]		2857 [1297]	57 1/4 [1454]	51 5/8 [1311]	104 [2642]	74 [1880]

**ENGINEERING SPECIFICATION: ZURN Z1172-116**

Large capacity Acid Resistant Coated interior and exterior fabricated steel grease interceptor, rated at \_\_\_\_ GPM and \_\_\_\_ Lbs. grease capacity, with internal air relief by-pass, bronze cleanout plug and visible double wall trap seal with removable pressure equalizing/flow diffusing baffle. Gasketed non-skid secured cover with covered removable lift handles, complete with flow control fitting. Furnished with 110vac programmable pumping unit, pump mounting hardware, 30'[9144] of poly tubing and 5 gal.[19] of grease eating bacteria. Regularly furnished with inlet and outlet in high position.

**OPTIONS** (Check/specify appropriate options)

**PREFIXES**

- \_\_\_\_ Z    Acid Resistant Coated Fabricated Steel\*
- \_\_\_\_ ZS    All Type 304 Fabricated Stainless Steel

**SUFFIXES**

- |   |  |
|---|--|
| <ul style="list-style-type: none"> <li>____ -1    1 gal.[4] Grease Eating Bacteria only</li> <li>____ -5    5 gal.[19] Grease Eating Bacteria only</li> <li>____ -AL    Aluminum Cover</li> <li>____ -BB    Timer Battery Backup</li> <li>____ -CS    Custom Screens (for Z1183). Specify material and perforation size required.</li> <li>____ -E    Acid Resistant Coated Interior and exterior fabricated steel extension section. (Specify 'C' Dim. required) for recessed installation.</li> <li>____ -HD    Heavy duty traffic cover rated at 10,000 lbs. [4536] maximum safe live load.</li> <li>____ -K    Anchor flange 1 3/4 [44] down from top and 2 [51] wide.</li> </ul> | <ul style="list-style-type: none"> <li>____ -KC    Anchor flange 1 3/4 [44] down from top and 2 [51] wide with clamp collar.</li> <li>____ -L    Angle type (Z1108-L) flow control device.</li> <li>____ -RE    Recessing receiver enclosed type for recessed installation. Furnished with adjustable support brackets and gasketed non-skid secured cover with covered recessed lift handles.</li> <li>____ -P    Pump only, 110vac</li> <li>____ -RK    Retrofit kit, pump and bacteria (5 gal.[19]) only</li> </ul> |
|---|--|

\*REGULARLY FURNISHED UNLESS OTHERWISE SPECIFIED

<b>REV. A</b>	<b>DATE: 10/16/07</b>	<b>C.N. NO. 97459</b>
<b>DWG. NO. P-14956</b>	<b>PRODUCT NO. Z1172-116</b>	