



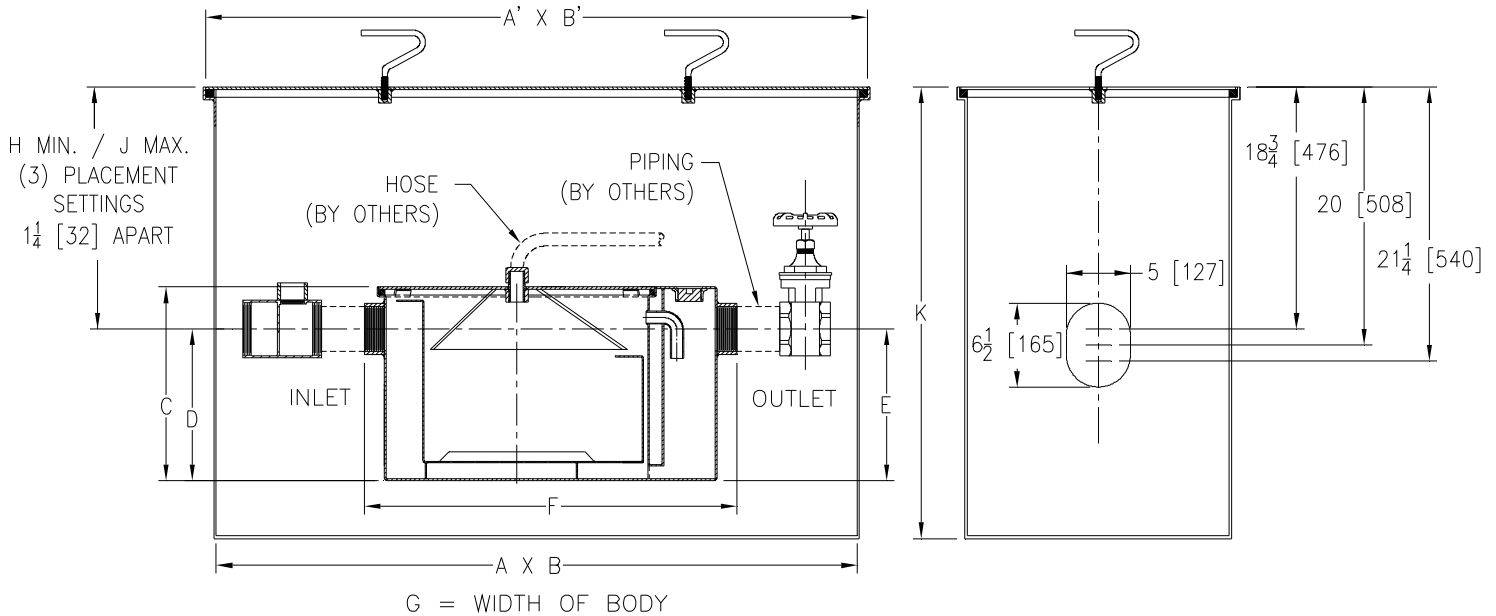
# Z1173-TD-79

## GREASE INTERCEPTOR W/ GREASE ACCUMULATING CONE, INLINE SHUTOFF VALVE AND ENCLOSED RECESSING RECEIVER

SPECIFICATION SHEET

TAG \_\_\_\_\_

Dimensional Data (inches and [ mm ]) are Subject to Manufacturing Tolerances and Change Without Notice



Size	Inlet/Outlet Size**	Flow Rate G.P.M. [L]	Capacity		Approx. Wt. Lbs. [kg]
			Water Gal. [L]	Grease Lbs. [kg]	
600	3 [75]	25 [94]	21 [79]	50 [23]	300 [136]

Dimensions in Inches											
A	A'	B	B'	C	D/E	F	G	H	J	K	
50 [1270]	52 [1321]	23 1/4 [591]	25 1/4 [641]	17 [432]	12 1/2 [318]	32 1/4 [819]	19 7/8 [505]	18 3/4 [476]	21 1/4 [540]	35 [889]	

**ENGINEERING SPECIFICATION:** ZURN Z1173-TD-79 Acid Resistant Coated interior and exterior fabricated steel grease interceptor, rated at \_\_\_\_ GPM and \_\_\_\_ Lbs. grease capacity, with internal air relief by-pass, bronze cleanout plug and visible double wall trap seal with removable combination pressure equalizing/flow diffusing baffle and sediment tray. Gasketed non-skid secured cover with draw off port having bronze pipe nipple and cap, grease accumulating cone, in line closure valve, Z1108 Flow Control Fitting, and fabricated steel enclosed recessing receiver with adjustable support brackets, gasketed non-skid cover, and lift handles. Regularly furnished inlet and outlet in high position. Note: Location of outlet from bottom of interceptor cannot be changed.

**PREFIXES**

\_\_\_\_ Z Acid Resistant Coated Fabricated Stainless Steel\*

REV.	DATE: 6/2/06	C.N. NO. 95167
DWG. NO. P-15286		PRODUCT NO. Z1173-TD-79

\*REGULARLY FURNISHED UNLESS OTHERWISE SPECIFIED