



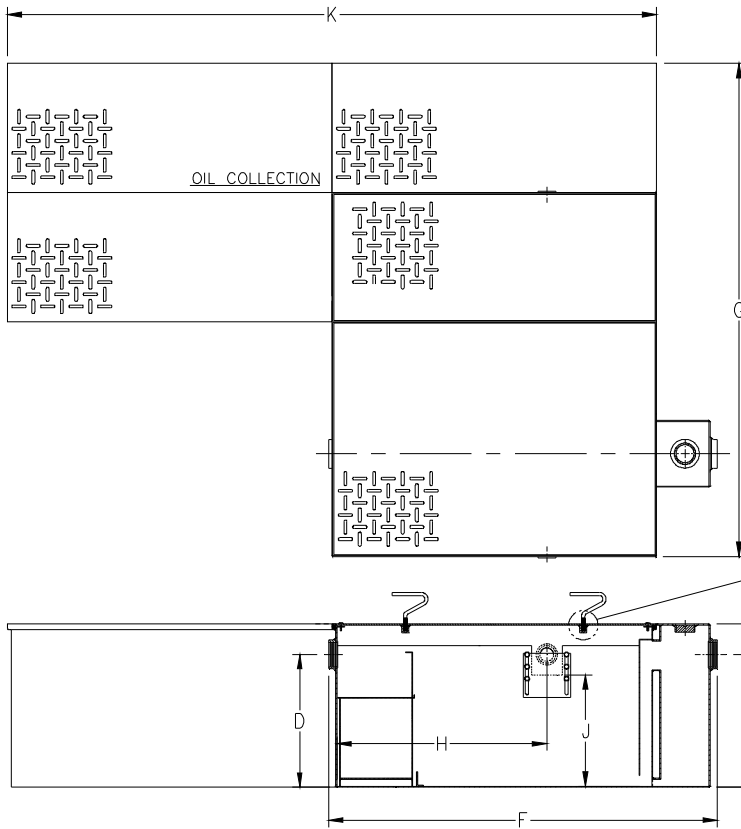
# Z1188-ST-101

LG. CAPACITY OIL INTERCEPTOR WITH INTEGRAL 500 GAL. STORAGE TANK & 4 [102] HIGH INLET/OUTLET

SPECIFICATION SHEET

TAG \_\_\_\_\_

Dimensional Data (inches and [ mm ]) are Subject to Manufacturing Tolerances and Change Without Notice



Flow Rate GPM [LPM] Min.	Oil Storage Tank Cap. Gal. [L]	Inlet/Outlet Size**	No. of Covers	
			Trap	Tank
75 [284]	500 [1893]	4 [102]	1	4

Flow Rate GRM [LPM] Min.	Water Capacity Gal. [L]	Approx. Wt. Lbs. [kg]	Dimensions in Inches [mm]						
			C	D/E	F	G	H	J	K
75 [284]	88 [333]	1464 [664]	22-3/4 [578]	18-1/2 [470]	51-3/8 [1305]	106-1/4 [2699]	29-1/4 [743]	15-1/2 [394]	83-7/8 [2130]

**ENGINEERING SPECIFICATION:** ZURN Z1188-ST-101

Acid Resistant Coated interior and exterior fabricated steel oil interceptor. Complete with bronze cleanout plug and visible double wall trap seal, removable combination pressure equalizing/flow diffusing baffle and sediment bucket, oil draw-off, vent connections, secured gasketed non-skid cover, flow control fitting and left hand integral storage tank. Regularly furnished with 4" [102mm] high inlet and outlet. Note: location of outlet from bottom of interceptor cannot be changed.

**OPTIONS** (Check/specify appropriate options)

**PREFIXES**

\_\_\_ Z Acid Resistant Coated Fabricated Steel\*

**SUFFIXES**

- \_\_\_ -E Integral Acid Resistant Coated interior and exterior fabricated steel extension section. (Specify 'C' Dim. required) for recessed installation.
- \_\_\_ -HD Heavy-duty traffic cover rated at 10,000 lbs. maximum safe live load. An increased 'C' dim. is required when -HD option is specified. (See -HD option specification sheet)
- \_\_\_ -K Anchor flange 1 3/4 [44] down from top and 2 [51] wide. A 3 [76] minimum extension height is required when anchor flange (-K) option is specified. (Specify 'C' Dim. height required.)
- \_\_\_ -KC Anchor flange 1 3/4 [44] down from top and 2 [51] wide with clamp collar.
- \_\_\_ -STR Storage tank on right hand side when facing the inlet.

\* Regularly furnished unless otherwise specified.