



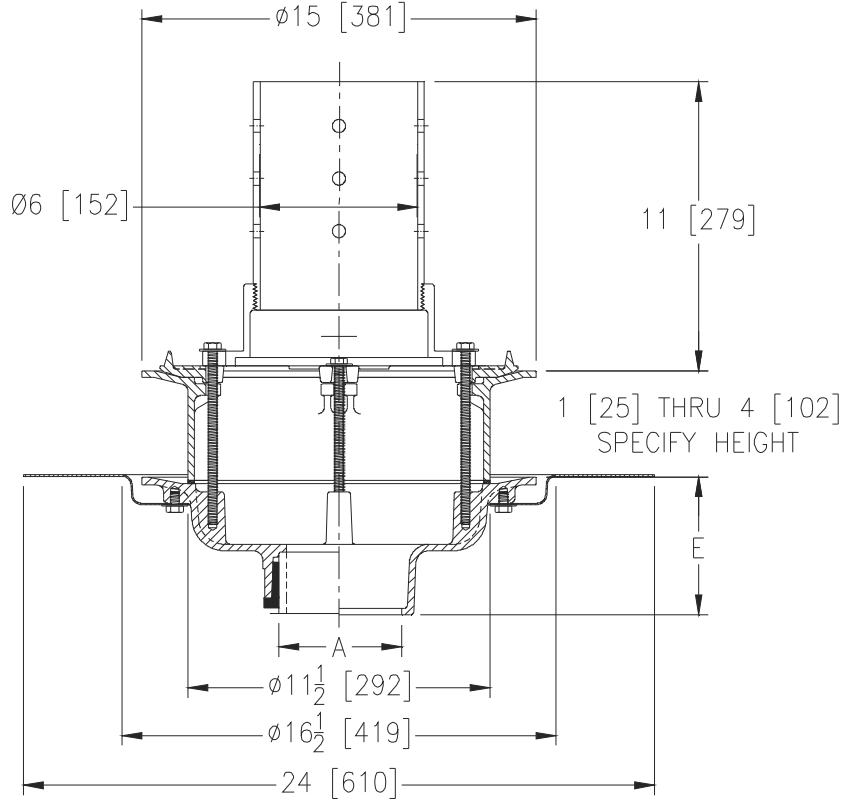
Z100-341

15 [381] DIAMETER MAIN ROOF DRAIN W/ PERFORATED STANDPIPE, DECK PLATE AND STATIC EXTENSION

SPECIFICATION SHEET

TAG _____

Dimensional Data (inches and [mm]) are Subject to Manufacturing Tolerances and Change Without Notice



A Pipe Size In [mm]	Approx. Wt. Lbs [kg]
2,3,4 [51,76,102]	41 [19]
5,6 [127,152]	42 [19]
8 [203]	43 [20]

ENGINEERING SPECIFICATION: ZURN Z100-341

15" [381mm] Diameter roof drain. Dura-Coated cast iron body with combination membrane flashing clamp/gravel guard, static extension, Top-Set® deck plate and 6" [152mm] standpipe.

OPTIONS (Check/specify appropriate options)

PIPE SIZE

- 2,3,4,5,6,8 [51,72,102,127,152,203]
- 2,3,4,5,6,8 [51,72,102,127,152,203]
- 2,3,4,5,6,8 [51,72,102,127,152,203]
- 2,3,4 [51,76,102]
- 6 [152]

(Specify size/type) **OUTLET**

- _____ IC Inside Caulk
- _____ IP Threaded
- _____ NH No-Hub
- _____ NL Neo-Loc
- _____ NL Neo-Loc

'E' BODY HT. DIM.

- 5-1/4 [133]
- 3-3/4 [95]
- 5-1/4 [133]
- 4-9/16 [116]
- 5-7/16 [112]

PREFIXES

- _____ Z D.C.C.I. Body

SUFFIXES

- _____ -AR Acid Resistant Epoxy Coated
- _____ -DX Dex-O-Tex Flange
- _____ -G Galvanized Cast Iron
- _____ -SC Secondary Clamp Collar
- _____ -VP Vandal-Proof Secured Top
- _____ -90 90° Threaded Side Outlet Body
(2,3,4,5,6 [51,72,102,127,152])

* Regularly furnished unless otherwise specified.