

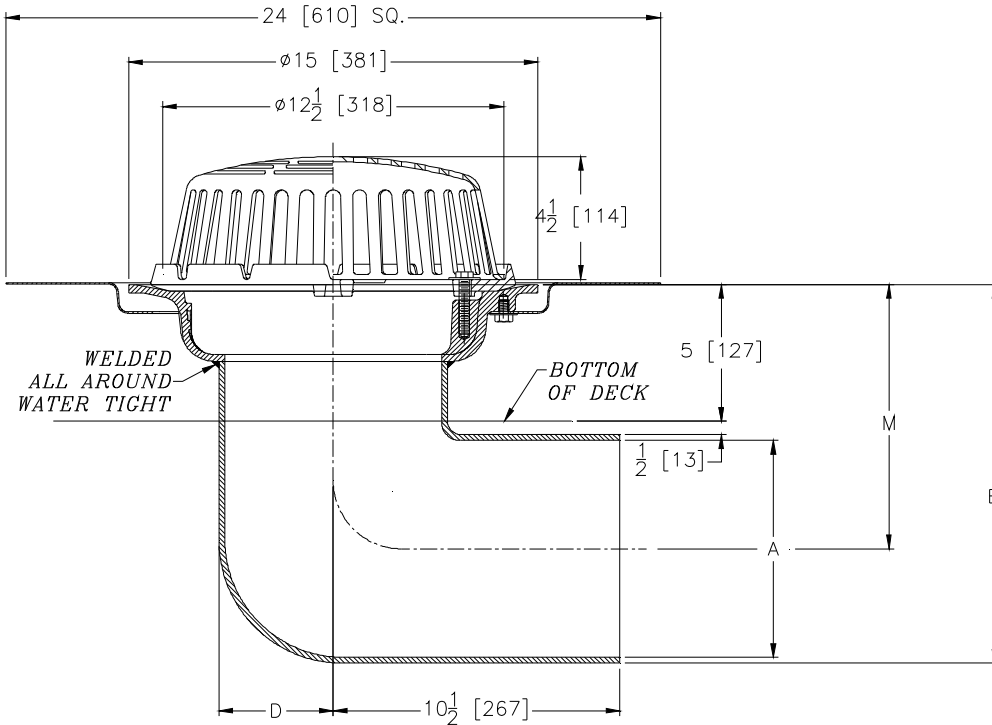


# Z100-264

## 15 [381] DIAMETER FABRICATED LATERAL ROOF DRAIN W/ TOP-SET® ROOF DECK PLATE

TAG \_\_\_\_\_

Dimensional Data (inches and [mm]) are Subject to Manufacturing Tolerances and Change Without Notice



Dimensions In Inches			Approx. Wt. Lbs. [kg]	Dome Open Area Sq. In [sq. cm.]
A Pipe Size	D	M		
8 [203]	4-3/16 [106]	9-11/16 [246]	65 [29]	103 [665]

### SUFFIXES

- \_\_\_ -AR Acid Resistant Epoxy Coated
- \_\_\_ -AW 3/4 [19] to 4 [102] Adjustable Water Level Regulator (Specify Ht.) (ZC only)
- \_\_\_ -BS Bronze Mesh Screen Over Dome
- \_\_\_ -E Static Extension 1 [25] thru 4 [102] (Specify Ht.)
- \_\_\_ -EA Adjustable Extension Assembly 1 3/4 [44] thru 3 1/2 [89]
- \_\_\_ -ES Static Extension with Secondary Clamping Collar at Body
- \_\_\_ -FG Flush Grate (Replaces Dome Strainer)
- \_\_\_ -G Galvanized Cast Iron
- \_\_\_ -GD Galvanized Cast Iron Dome (ZC only)
- \_\_\_ -HD 6 3/4 [171] High Aluminum Dome (148 Sq. In. [955 cm.²] open area)
- \_\_\_ -SC Secondary Clamping Collar
- \_\_\_ -SS Stainless Mesh Screen Over Dome
- \_\_\_ -VP Vandal-Proof Secured Top
- \_\_\_ -W2 2 [51] Internal Water Dam
- \_\_\_ -W3 3 [76] Internal Water Dam
- \_\_\_ -W4 4 [102] Internal Water Dam
- \_\_\_ -84 Stainless Steel Perforated Gravel Guard (Specify Ht.)
- \_\_\_ -85 Stainless Steel Perforated Extension (Specify Ht.)
- \_\_\_ -89 2 [51] High External Water Dam

### OPTIONS (Check/specify appropriate options)

**ENGINEERING SPECIFICATION: ZURN Z100-264**  
 15 [381] Diameter lateral roof drain. Dura-Coated cast iron body with combination membrane flashing clamp/gravel guard, low silhouette Poly-Dome strainer and top-set® roof deck plate.

### PREFIXES

- \_\_\_ Z D.C.C.I. Body with Poly-Dome\*
- \_\_\_ ZA D.C.C.I. Body with 6 3/4 [171] High Aluminum Dome
- \_\_\_ ZC D.C.C.I. Body with Cast Iron Dome
- \_\_\_ ZRB D.C.C.I. Body with Plain Bronze Dome

### PIPE SIZE

8 [203]

### (Specify size/type) OUTLET

\_\_\_ NH No-Hub

### 'E' BODY HT. DIM.

13-7/8 [352]

REV.	DATE: 04/10/13	C.N. NO. 129112
PROD./DWG. NO. Z100-264		

\*REGULARLY FURNISHED UNLESS OTHERWISE SPECIFIED