



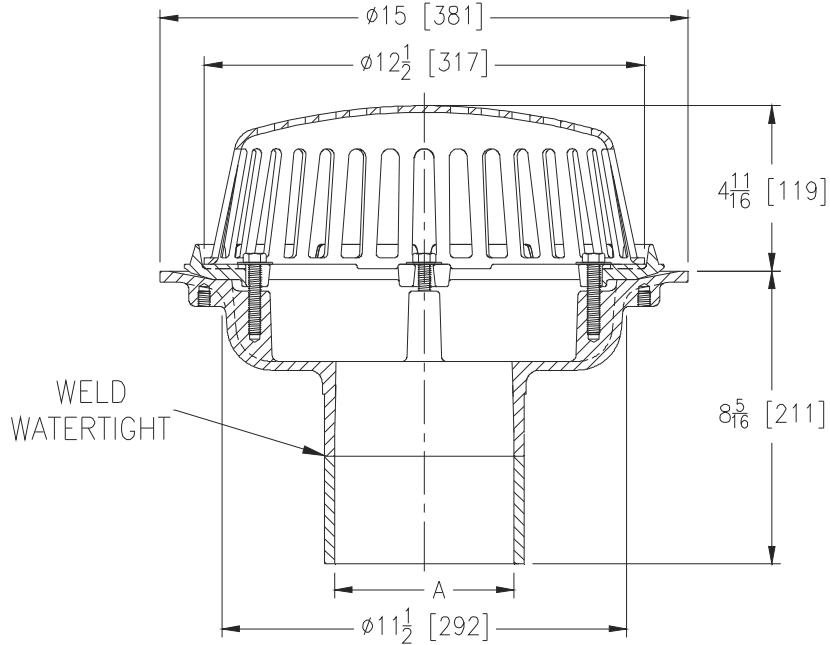
# Z100-335

## Ø15 [381] MAIN ROOF DRAIN LOW SIHOUETTE DOME W/ NO-HUB EXTENDED OUTLET

SPECIFICATION SHEET

TAG \_\_\_\_\_

Dimensional Data (inches and [ mm ]) are Subject to Manufacturing Tolerances and Change Without Notice



A Pipe Size in [mm]	Approx. Wt. lbs [kg]	Dome Open Area in <sup>2</sup> [c <sup>2</sup> ]
2,3,4 [51,76,102]	26 [12]	103 [665]
5,6 [127,152]	27 [12]	
8 [203]	28 [13]	

### ENGINEERING SPECIFICATION: ZURNZ100-335

15 [381] Diameter roof drain. Dura-Coated cast iron body with combination membrane flashing clamp/gravel guard and low silhouette Poly-Dome and extended no-hub outlet.

### OPTIONS (Check/specify appropriate options)

(Specify size/type) **OUTLET**

\_\_\_\_\_ NH No-Hub

### PIPE SIZE

2,3,4,5,6,8 [51,76,102,127,152,203]

### PREFIXES

- \_\_\_\_\_ Z D.C.C.I. Body with Poly-Dome\*
- \_\_\_\_\_ ZA D.C.C.I. Body with Aluminum Dome
- \_\_\_\_\_ ZC D.C.C.I. Body with Cast Iron Dome
- \_\_\_\_\_ ZRB D.C.C.I. Body with Plain Bronze Dome

### SUFFIXES

- |           |  |           |   |
|-----------|--|-----------|---|
| _____ -AC | Angular Underdeck Clamp  | _____ -FG | Flush Grate (Replaces Dome Strainer)  |
| _____ -AR | Acid Resistant Epoxy Coated  | _____ -G  | Galvanized Cast Iron  |
| _____ -AW | 3/4 [19] to 4 [102] Adj. Water Level Regulator<br>(Specify Height) (ZC Only) | _____ -GD | Galvanized Cast Iron Dome (ZC Only)   |
| _____ -BS | Bronze Mesh Screen Over Dome   | _____ -HD | 6 3/4 [171] High Aluminum Dome Strainer<br>(148 Sq. In. [955 cm <sup>2</sup> ] Open Area) (ZA Only) |
| _____ -C  | Underdeck Clamp  | _____ -R  | Roof Sump Receiver  |
| _____ -DE | Deck Extension   | _____ -SC | Secondary Clamp Collar  |
| _____ -DP | Top-Set® Deck Plate (Replaces both the -C and -R)                            | _____ -SS | Stainless Steel Mesh Screen Over Dome   |
| _____ -DR | Top-Set® Drain Riser   | _____ -ST | Dome with Solid Top (ZA, ZC & ZRB Only)   |
| _____ -DX | Dex-o-tex Flange   | _____ -VP | Vandal-Proof Secured Top  |
| _____ -E  | Static Extension 1 [25] thru 4 [102] (Specify Ht.)                           | _____ -W2 | 2 [51] Internal Water Dam   |
| _____ -EA | Adjustable Extension Assembly<br>2 1/8 [54] thru 3 1/2 [89]                  | _____ -W3 | 3 [76] Internal Water Dam   |
| _____ -EB | Top-Set® Adjustable Extension Assembly                                       | _____ -W4 | 4 [102] Internal Water Dam  |
|           |  | _____ -84 | Stainless Steel Perforated Gravel Guard   |
|           |  | _____ -85 | Stainless Steel Perforated Extension  |
|           |  | _____ -89 | 2 [51] High External Water Dam  |

\* Regularly furnished unless otherwise specified.

### Zurn Industries, LLC | Specification Drainage Operation

1801 Pittsburgh Avenue, Erie, PA U.S.A. 16502 · Ph. 855-663-9876, Fax 814-454-7929

In Canada | Zurn Industries Limited

3544 Nashua Drive, Mississauga, Ontario L4V 1L2 · Ph. 905-405-8272, Fax 905-405-1292

[www.zurn.com](http://www.zurn.com)

Rev. -

Date: 9/15/2017

C.N. No. 137733

Prod. | Dwg. No. Z100-335