

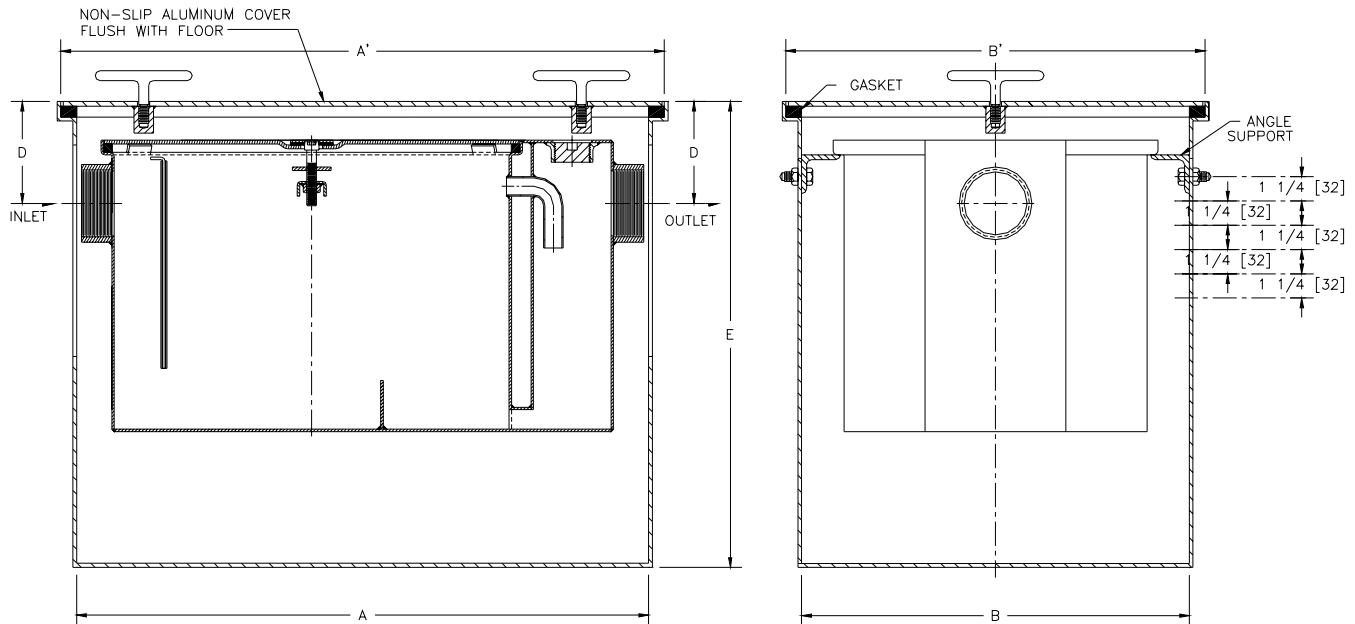


Z1170-107
ADJUSTABLE RECESSING
RECEIVER FOR GREASE INTERCEPTOR

SPECIFICATION SHEET

TAG _____

Dimensional Data (inches and [mm]) are Subject to Manufacturing Tolerances and Change Without Notice



| Size | Inlet/ Outlet Size** | Flow Rate G.P.M. [L] | Capacity | | Approx. Wt. Lbs. [kg] | Dimensions in Inches | | | | | |
|------|----------------------------|----------------------------|-------------------|---------------------|-----------------------------|----------------------|--------------|--------------|--------------|-------------|--------------|
| | | | Water Gal. [L] | Grease Lbs. [kg] | | A | A' | B | B' | D | E |
| 100 | 2 [51] | 4 [15] | 3 [11] | 8 [4] | 145 [66] | 21 3/8 [543] | 23 3/8 [594] | 13 3/8 [340] | 15 3/8 [391] | 4 3/8 [111] | 19 [438] |
| 200 | | 7 [26] | 5 [19] | 14 [6] | 172 [78] | 22 3/4 [578] | 24 3/4 [629] | 15 3/8 [391] | 17 3/8 [441] | 5 [127] | 20 1/8 [511] |
| 300 | | 10 [38] | 6 [23] | 20 [9] | 204 [93] | 25 [635] | 27 [686] | 17 1/2 [445] | 19 1/2 [495] | 5 1/2 [140] | 20 3/4 [527] |
| 400 | 3 [76] | 15 [57] | 10 [38] | 30 [14] | 244 [111] | 25 3/4 [654] | 27 3/4 [705] | 20 [508] | 22 [559] | 6 [152] | 22 3/8 [568] |
| 500 | | 20 [76] | 16 [60] | 40 [18] | 288 [131] | 29 1/2 [749] | 31 1/2 [800] | 20 3/4 [527] | 22 3/4 [578] | 5 1/4 [133] | 24 [610] |
| 600 | | 25 [94] | 21 [79] | 50 [23] | 354 [161] | 34 [864] | 36 [914] | 23 1/4 [591] | 25 1/4 [641] | 6 1/2 [165] | 25 3/4 [654] |
| 700 | | 35 [132] | 30 [113] | 70 [32] | 411 [187] | 35 [889] | 37 [940] | 26 [660] | 28 [711] | 6 1/2 [165] | 26 3/4 [679] |
| 800 | | 50 [189] | 40 [151] | 100 [45] | 491 [223] | 37 1/4 [946] | 39 1/4 [997] | 28 [711] | 30 [762] | 7 1/2 [191] | 30 1/2 [775] |

ENGINEERING SPECIFICATION: ZURN Z1170-107 Acid resistant epoxy coated fabricated steel recessing receiver, enclosed type, equipped with adjustable support brackets and gasketed non-skid aluminum cover with lift handles and handle port plugs. Complete with acid resistant coated interior and exterior fabricated steel grease interceptor, PDI rated at ___ GPM and ___ Lbs. grease capacity, with internal air-relief by-pass, bronze cleanout plug, removable pressure equalizing/flow diffusing inlet baffle, fixed bottom outlet baffle, visible double wall trap seal, and gasketed, secured aluminum cover with center tie down assembly. Includes Z1108 flow control fitting.

PREFIXES

_____ **Z** Acid Resistant Coated Fabricated Steel*

SUFFIXES

_____ **-E** Acid resistant coated Interior and exterior fabricated steel extension section. (Specify 'E' Dim. required) for recessed installation.

_____ **-K** Anchor flange 1-3/4 [44] down from top and 2 [51] wide.

_____ **-KC** Anchor flange 1-3/4 [44] down from top and 2 [51] wide with clamp collar.

** Inlet and outlet sizes shown indicate standard operating sizes and flow control setting. Size #300 will have 3[75] connections reduced to 2[50] and sizes #600 thru #800 will have 4[100] connections reduced to 3[75] as standard. If changed, flow control must be adjusted accordingly.

| | | |
|--|----------------------|-----------------------|
| REV. | DATE: 4/26/04 | C.N. NO. 92126 |
| DWG. NO. P-15051 PRODUCT NO. Z1170-107 | | |

*REGULARLY FURNISHED UNLESS OTHERWISE SPECIFIED