



Z100-340

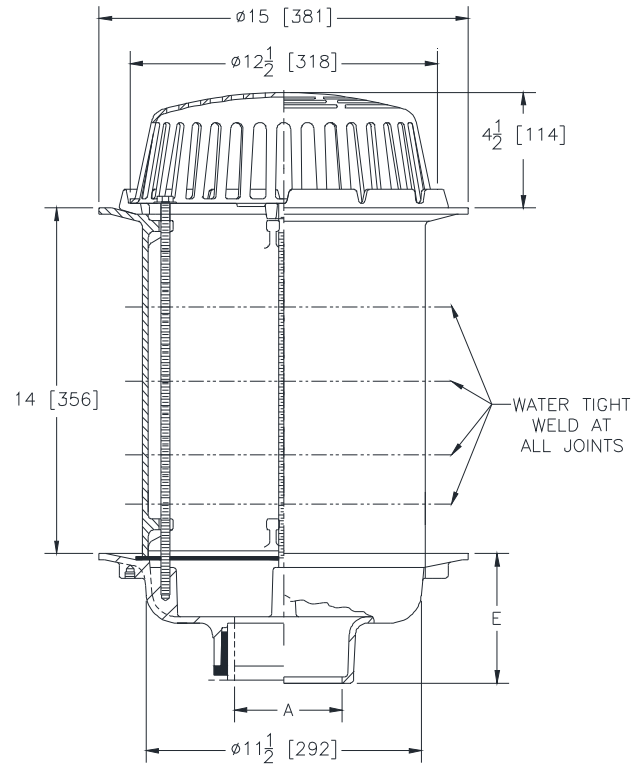
15 [381] DIAMETER MAIN ROOF DRAIN
 LOW SILHOUETTE DOME W/ 14 [356] STATIC EXTENSION

SPECIFICATION SHEET

TAG _____

Dimensional Data (inches and [mm]) are Subject to Manufacturing Tolerances and Change Without Notice

A - Pipe Size In.[mm]	Approx. Wt. Lbs. [kg]	Grate Open Area Sq. In. [cm ²]
2,3,4 [52,76,102]	31 [14]	103 [665]
5,6 [127,152]	32 [15]	
8 [203]	33 [15]	



ENGINEERING SPECIFICATION: ZURN Z100-340

15" [381 mm] Diameter roof drain. Dura-Coated cast iron body with combination membrane flashing clamp/gravel guard, 14" [356 mm] static extension and low silhouette Poly-Dome strainer.

OPTIONS (Check/specify appropriate options)

PIPE SIZE

2,3,4,5,6,8 [51,76,102,127,152, 203]
 2,3,4,5,6,8 [51,76,102,127,152, 203]
 2,3,4,5,6,8 [51,76,102,127,152, 203]
 2,3,4 [51,76,102]

(Specify size/type) OUTLET

_____ IC Inside Caulk
 _____ IP Threaded
 _____ NH No-Hub
 _____ NL Neo-Loc

'E' BODY HT. DIM.

5-1/4 [133]
 3-3/4 [95]
 5-1/4 [133]
 4-5/8 [117]

PREFIXES

_____ Z D.C.C.I Body with Poly-Dome*
 _____ ZA D.C.C.I Body with 6-3/4 [171] High Aluminum Dome
 _____ ZC D.C.C.I Body with Cast Iron Dome
 _____ ZRB D.C.C.I Body with Plain Bronze Dome

SUFFIXES

_____ -AC Angular Underdeck Clamp	_____ -HD 6-3/4 [171] High Aluminum Dome Strainer (148 Sq. In. [955 cm ²] Open Area) (ZA Only)
_____ -AR Acid Resistant Epoxy Coated Finish	_____ -R Roof Sump Receiver
_____ -AW 3/4 [19] to 4 [102] Adj. Water Level Regulator	_____ -SC Secondary Clamping Collar
_____ -C Underdeck clamp	_____ -SS Stainless Steel Mesh Screen Over Dome
_____ -DE Deck Extension	_____ -VP Vandal Proof Secured Top
_____ -DP Top-Set® Deck Plate (Replaces both the -C and -R)	_____ -W2 2 [51] Internal Water Dam
_____ -DR Top-Set® Drain Riser	_____ -W3 3 [76] Internal Water Dam
_____ -EA Adjustable Extension Assembly 2-1/8 [54] thru 3-1/2 [89]	_____ -W4 4 [102] Internal Water Dam
_____ -EB Top-Set® Adjustable Extension Assembly	_____ -84 Stainless Steel Perforated Gravel Guard
_____ -FG Flush Grate	_____ -85 Stainless Steel Perforated Extension
_____ -G Galvanized Cast Iron	_____ -89 2 [51] High External Water Dam
	_____ -90 90° Threaded Side Outlet Body

* Regularly furnished unless otherwise specified.

Zurn Industries, LLC | Specification Drainage Operation
 1801 Pittsburgh Avenue, Erie, PA U.S.A. 16502 · Ph. 855-663-9876, Fax 814-454-7929
 In Canada | Zurn Industries Limited
 3544 Nashua Drive, Mississauga, Ontario L4V 1L2 · Ph. 905-405-8272, Fax 905-405-1292
www.zurn.com

Rev. -
 Date: 01/10/18
 C.N. No. 139445
 Prod. | Dwg. No. Z100-340