

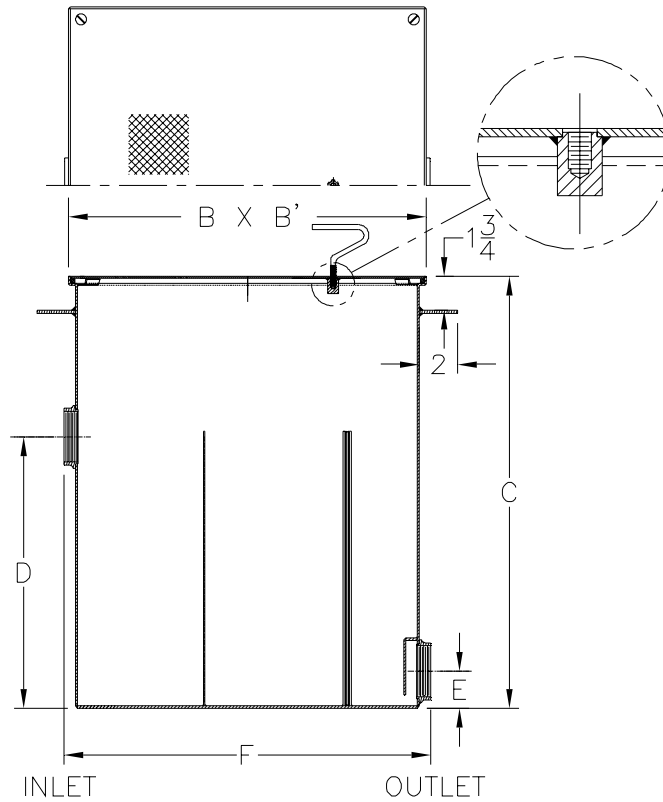


Z1185-108

LINT INTERCEPTOR WITH ANCHOR FLANGE AND INTEGRAL EXTENSION

TAG _____

Dimensional Data (inches and [mm]) are Subject to Manufacturing Tolerances and Change Without Notice



Size No. of Machines	Inlet/Outlet Size**	Flow Rate G.P.M. [L]	Approx. Wt. Lbs. [kg]	Dimensions In Inches					
				B	B'	C	D	E	F
3	2 [50]	30 [113]	408 [185]	17 [432]	17 [432]	96 1/4 [2445]	13 1/2 [343]	3 1/4 [82]	17 1/4 [438]

ENGINEERING SPECIFICATION: ZURN Z1185-108 Acid Resistant Coated interior and exterior fabricated steel lint interceptor, non-skid secured cover, stainless lint intercepting secondary screen assembly and permanent primary straining baffle, anchor flange, and built-in extension. Regularly furnished with high inlet and low outlet.

OPTIONS (Check/specify appropriate options)

PREFIXES

_____ Z Acid Resistant Coated Fabricated Steel*

SUFFIXES

_____ -RS Stainless Steel Screen Replacement Assembly

REV.	DATE: 10/17/06	C.N. NO. 95747
DWG. NO. P-15342 PRODUCT NO. Z1185-108		

*REGULARLY FURNISHED UNLESS OTHERWISE SPECIFIED