



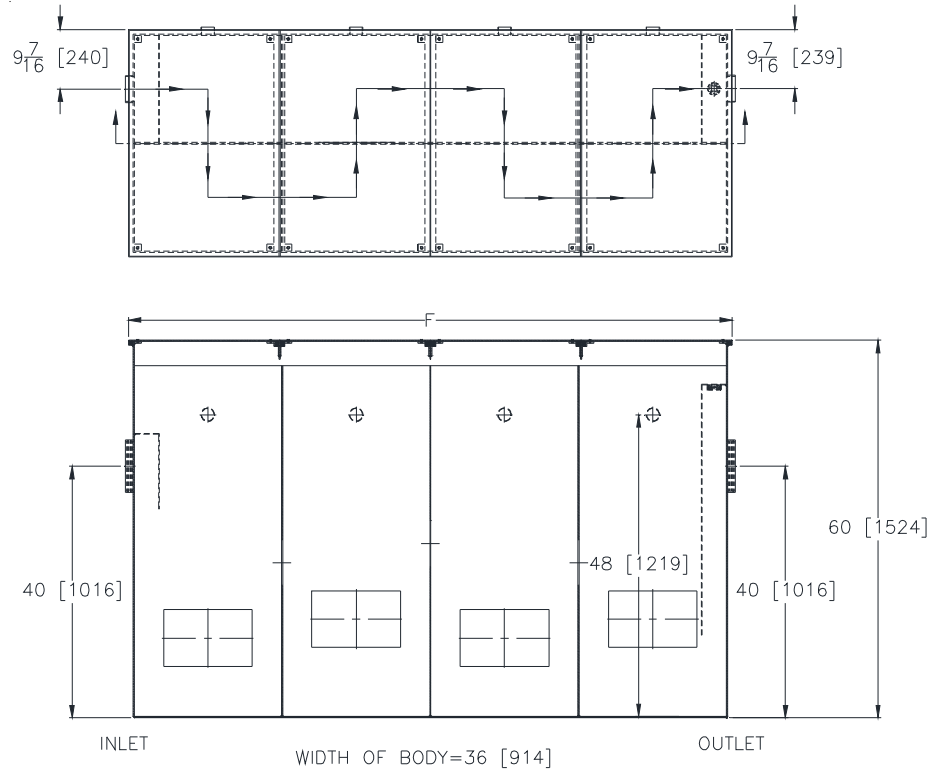
Z1187-91

SAND AND SEDIMENT INTERCEPTOR W/
8 [203] INLET AND OUTLET

SPECIFICATION SHEET

TAG _____

Dimensional Data (inches and [mm]) are Subject to Manufacturing Tolerances and Change Without Notice



Size	Cubic Ft. [Cubic m]	Approx. Wt.Lbs. [kg]	F-Dim in Inches [mm]
300	43 [1.2]	1600 [726]	60 [1524]
400	54 [1.5]	1750 [794]	72 [1829]
500	72 [2]	2100 [953]	96 [2438]
600	81 [2.3]	2500 [1135]	108 [2743]
700	90 [2.5]	2700 [1226]	120 [3048]
800	108 [3]	3000 [1362]	144 [3658]
1000	135 [3.8]	3640 [1652]	180 [4572]

ENGINEERING SPECIFICATION: ZURN Z1187-91

Acid Resistant Coated fabricated steel sand and sediment separator, ___ cu. ft. capacity below invert of outlet, 8" [203mm] threaded inlet and outlet, four 2" [51mm] threaded individual vent connections, complete with heavy duty scoriated non-skid gasketed removable cover(s).

OPTIONS (Check/specify appropriate options)

PREFIXES

___ Z Acid Resistant Coated Fabricated Steel*

SUFFIXES

- ___ -E Integral extension assembly for recessed installation (Specify overall height required)
- ___ -K Anchor flange 1 3/4 [44] down from top and 2 [51] wide.
No extension required to accomodate -K option.
- ___ -HD Extra heavy duty reinforced cover for vehicular traffic.
(Specify working load requirements)

* Regularly furnished unless otherwise specified.