

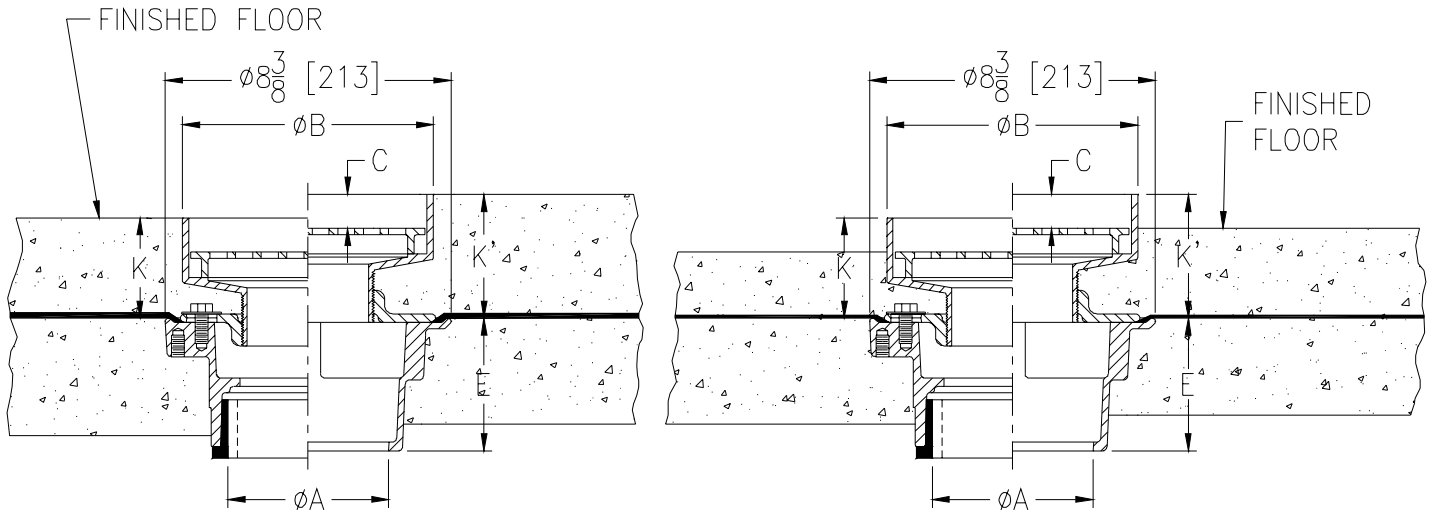


# Z415I-77 BODY ASSEMBLY WITH "TYPE I" STRAINER

SPECIFICATION SHEET

TAG \_\_\_\_\_

Dimensional Data (inches and [ mm ]) are Subject to Manufacturing Tolerances and Change Without Notice



Dimensions In Inches							Approx. Wt. Lbs. [ Kg. ]	Strainer Open Area Sq. In. [ Cm <sup>2</sup> ]
A - Pipe Size	B Strainer Dia.	C	K		K'			
			Min.	Max.	Min.	Max.		
2-3 [51-76]	5 [127]	3/4 [19]	1 5/8 [41]	2 3/4 [70]	2 1/2 [64]	3 1/2 [89]	14 [6]	8 [52]
2-3-4 [51-76-102]	7 [178]	1 [25]	2 1/4 [57]	2 3/8 [60]	3 1/8 [79]	4 1/4 [108]	19 [9]	13 [84]
3-4 [76-102]	9 [229]	1/2 [13]	2 [51]	3 [76]	2 7/8 [73]	4 [102]	23 [10]	23 [148]
6 [152]	9 [229]	1/2 [13]	2 [51]	2 7/8 [73]	2 7/8 [73]	4 [102]	23 [10]	23 [148]

**ENGINEERING SPECIFICATION:** ZURN ZN415I-77 Floor and shower drain, Dura-Coated cast iron body with bottom outlet, combination invertible membrane clamp and adjustable collar with "TYPE I" polished nickel bronze strainer with raised flange.

**OPTIONS** (Check/specify appropriate options)

**PIPE SIZE**

- 2 thru 4 [51 thru 102]
- 2 [51]
- 3 [76]
- 4 [102]
- 6 [152]
- 2 thru 4 [51 thru 102]
- 2 thru 4 [51 thru 102]

(Specify size/type) **OUTLET**

- \_\_\_\_\_ IC Inside Caulk
- \_\_\_\_\_ IP Threaded
- \_\_\_\_\_ IP Threaded
- \_\_\_\_\_ IP Threaded
- \_\_\_\_\_ IP Threaded
- \_\_\_\_\_ NH No-Hub
- \_\_\_\_\_ NL Neo-Loc

**'E' BODY HT. DIM.**

- 3 7/8 [98]
- 2 3/8 [60]
- 2 5/8 [67]
- 2 7/8 [73]
- 2 3/4 [70]
- 3 7/8 [98]
- 4 5/8 [117]

**PREFIXES**

- \_\_\_\_\_ ZB D.C.C.I. Body Assembly w/ Polished Bronze Top
- \_\_\_\_\_ ZN D.C.C.I. Body Assembly w/ Polished Nickel Bronze Top\*

**SUFFIXES**

- |  |   |
|--|---|
| <ul style="list-style-type: none"> <li>_____ -AR Acid Resisting Epoxy Coated Cast Iron</li> <li>_____ -G Galvanized Cast Iron</li> <li>_____ -P Trap Primer Connection (Specify 1/2 [13] or 3/4 [19])</li> <li>_____ -TC Neo-loc Test Cap Gasket<br/>(2 - 4 [50 - 100] NL Bottom Outlet Only)</li> <li>_____ -TS Top Secured w/ Slotted Screws</li> <li>_____ -U 1 - 3 [25 - 76] High Extension Adapter</li> </ul> | <ul style="list-style-type: none"> <li>_____ -V Backwater Valve</li> <li>_____ -VP Vandal-Proof Secured Top</li> <li>_____ -Y Sediment Bucket</li> <li>_____ -90 90° Threaded Side Outlet Body<br/>(2 [51], 3 [76] Only)</li> </ul> |
|--|---|

\*REGULARLY FURNISHED UNLESS OTHERWISE SPECIFIED

<b>REV. B</b>	<b>DATE: 03/11/04</b>	<b>C.N. NO. 92017</b>
<b>DWG. NO. P-14414</b>	<b>PRODUCT NO. Z415I-77</b>	