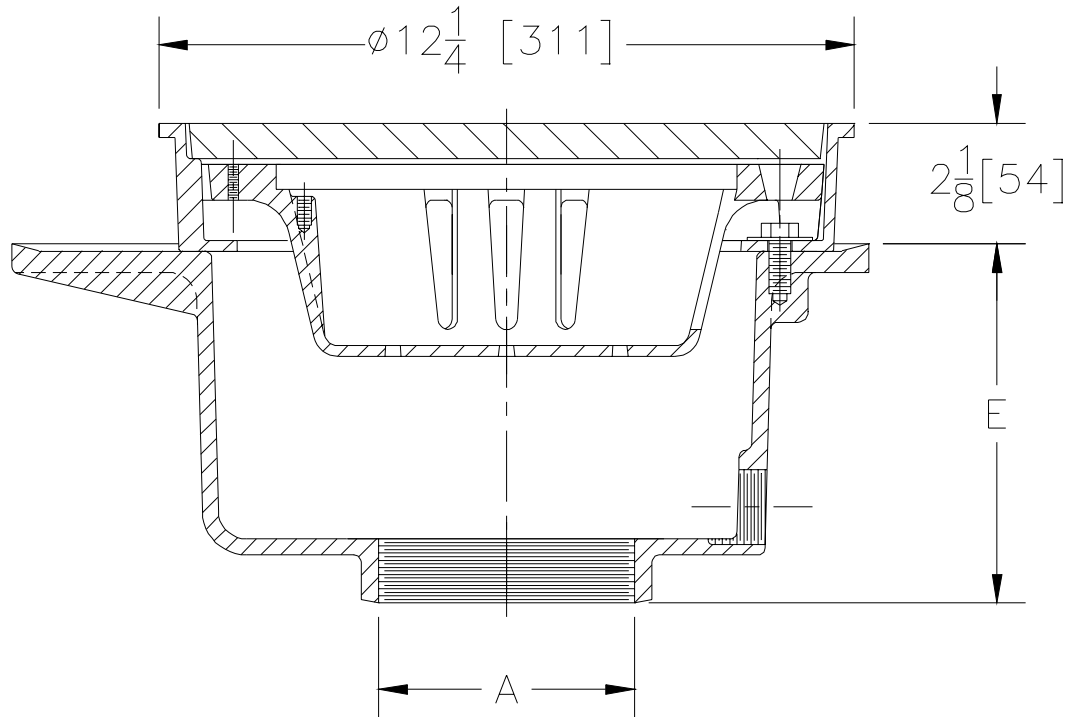




**Z-539-80**  
**12" [305] STAINLESS STEEL**  
**HEAVY DUTY DRAIN WITH DEEP SUMP**

TAG \_\_\_\_\_

Dimensional Data (inches and [ mm ]) are Subject to Manufacturing Tolerances and Change Without Notice



A- Pipe Size In.	Approx. Wt. Lbs. [kg]
3-4-5-6-8 [75-100-125-150-200]	68 [31]

**ENGINEERING SPECIFICATION:** ZURN Z-539-80 12 [305] Diameter top drain. CF8M type 316 Stainless Steel deep sump body with bottom outlet, seepage pan and combination membrane flashing clamp and frame for sediment bucket and heavy duty solid cover.

**OPTIONS** (Check/specify appropriate options)

**PIPE SIZE**

3 thru 8 [75 thru 200]

(Specify size/type) **OUTLET**

\_\_\_\_\_ IP Threaded

**'E' BODY HT. DIM.**

6 5/16 [160]

**PREFIXES**

- \_\_\_\_\_ **-SG** Solid Gasketed Cover
- \_\_\_\_\_ **-TS** Top Secured with Slotted Screws
- \_\_\_\_\_ **-VP** Vandal Proof Secured Top

<b>REV. A</b>	<b>DATE: 7/22/97</b>	<b>C.N. NO. 78254</b>
<b>DWG. NO. P-14496 PRODUCT NO. Z-539-80</b>		