



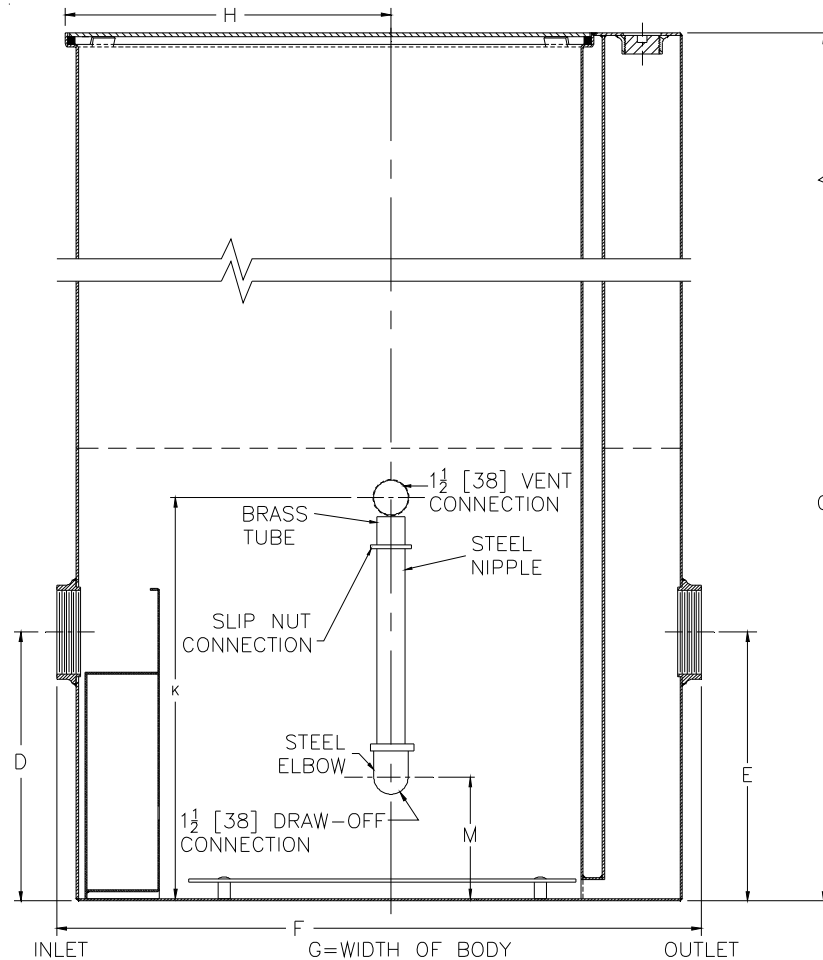
# Z1186-132

## OIL INTERCEPTOR W/HEAVY-DUTY COVER & INTEGRAL EXTENSION

SPECIFICATION SHEET

TAG \_\_\_\_\_

Dimensional Data (inches and [ mm ]) are Subject to Manufacturing Tolerances and Change Without Notice



Size	Inlet/ Outlet Size	Flow Rate GPM [L]	Water Cap. Gal. [L]	Approx. Wt.Lbs. [kg]	Dimensions In Inches						
					C	D/E	F	G	H	K	M
800	4[102]	50 [189]	30 [113]	171 [78]	71[1803]	14-1/4 [362]	34-1/8 [867]	22-1/2 [572]	17-1/4 [438]	21-1/4 [540]	6-7/16 [164]

**ENGINEERING SPECIFICATION: ZURNZ1186-132**

Acid Resistant Coated interior and exterior fabricated steel oil interceptor, bronze cleanout plug and visible double wall trap seal, removable combination pressure equalizing/flow diffusing baffle and sediment bucket, horizontal baffle, adjustable oil draw-off and vent connections either side, secured gasketed non-skid heavy-duty cover rated at 10,000 lbs. [4536 kg.] max. safe live load, complete with flow control fitting. Regularly furnished with inlet and outlet in standard position.

Note: Location of outlet from bottom of interceptor cannot be changed.

**OPTIONS** (Check/specify appropriate options)

**PREFIXES**

\_\_\_\_ Z Acid Resistant Coated Fabricated Steel\*

**SUFFIXES**

- \_\_\_\_ -K Anchor flange 1-3/4 [44] down from top and 2 [51] wide. A 3 [76] minimum extension height is required when anchor flange (-K) option is specified. (Specify 'C' Dim. height required.)
- \_\_\_\_ -KC Anchor flange 1-3/4 [44] down from top and 2 [51] wide with clamp collar.

<b>REV.</b>	<b>DATE: 11/05/12</b>	<b>C.N. NO. 124934</b>
<b>DWG. NO. 310819</b>	<b>PRODUCT NO. Z1186-132</b>	

\*REGULARLY FURNISHED UNLESS OTHERWISE SPECIFIED