



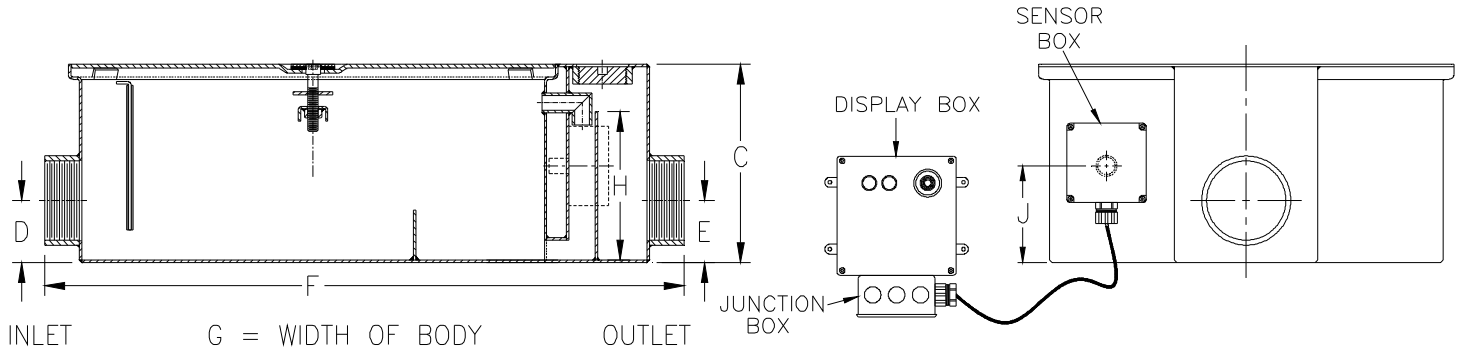
Z1171-92

LOW PROFILE GREASE INTERCEPTOR W/ NOTIFICATION SYSTEM

SPECIFICATION SHEET

TAG _____

Dimensional Data (inches and [mm]) are Subject to Manufacturing Tolerances and Change Without Notice



Size	Inlet/ Outlet Size**	Flow Rate GPM [LPM]	Capacity		Approx. Wt. Lbs. [kg]	Dimensions in Inches [mm]					
			Water Gal. [L]	Grease Lbs. [kg]		C	D/E	F	G	H	J
500	3 [76]	20 [75]	15 [57]	40 [18]	102 [46]	10 [254]	3-1/8 [79]	31 [787]	21-1/8 [537]	6-3/4 [171]	4-7/8 [124]
700		35 [132]	30 [114]	70 [32]	172 [78]	10-3/4 [273]	3-1/8 [79]	42-1/8 [1070]	29-3/8 [746]	7 [178]	5-1/2 [140]
800		50 [189]	45 [170]	100 [45]	210 [95]	16 [406]	10 [254]	49-1/2 [1257]	29-3/8 [746]	10 [254]	8-1/8 [206]

ENGINEERING SPECIFICATION: ZURN Z1171-92

Acid Resistant Coated interior and exterior fabricated steel low type grease interceptor, rated at ____ GPM and ____ Lbs. grease capacity, with internal air relief by-pass, bronze cleanout plug and visible double wall trap seal with removable combination pressure equalizing/flow diffusing baffle and sediment tray. Includes gasketed non-skid secured cover. Complete with encased fiberglass sensor box containing an electric grease level sensor, fiberglass display box with audio and visual alarm and junction box. Regularly furnished with 3" [76mm] low inlet and outlet with Z1108 flow control fitting.**

OPTIONS (Check/specify appropriate options)

PREFIXES

____ **Z** Acid Resistant Coated Fabricated Steel*

SUFFIXES

____ **-L** Angle type (Z1108-L) flow control device with plunger.
 ____ **-PW** Plug wrench

** Inlet and outlet sizes shown indicate standard operating sizes and flow control settings. All sizes will have 4 [102] connections reduced to 3 [76] as standard. If changed, flow control must be adjusted accordingly.

* Regularly furnished unless otherwise specified.