



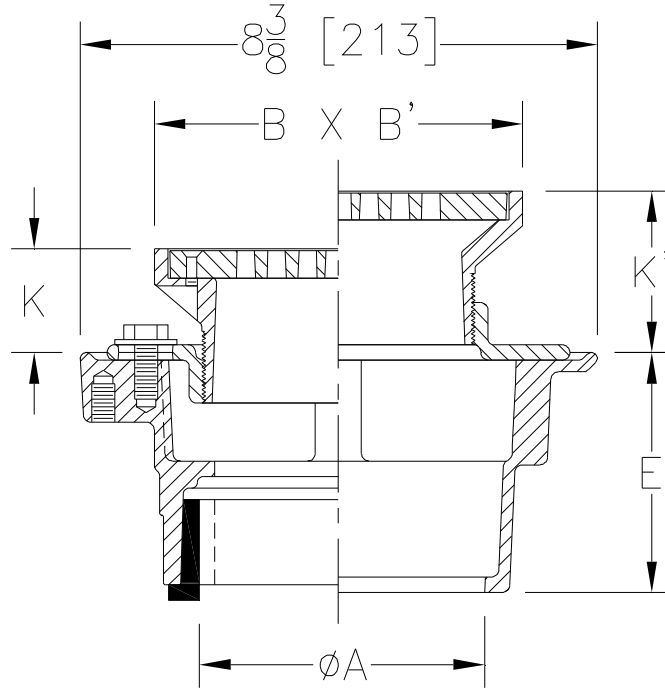
# Z415S-HD

BODY ASSEMBLY W/ "TYPE S" STRAINER AND HEAVY DUTY GRATE

SPECIFICATION SHEET

TAG \_\_\_\_\_

Dimensional Data (inches and [ mm ]) are Subject to Manufacturing Tolerances and Change Without Notice



| Dimensions in In [mm] |                          |        |            |            |            | Approx. Wt. Lbs. [kg] | Strainer Open Area Sq. In. [cm <sup>2</sup> ] |
|-----------------------|--------------------------|--------|------------|------------|------------|-----------------------|-----------------------------------------------|
| A - Pipe Size         | B x B' Strainer Top Size | K      |            | K'         |            |                       |                                               |
|                       |                          | Min.   | Max.       | Min.       | Max.       |                       |                                               |
| 2,3,4 [51,76,102]     | 6 x 6 [152 x 152]        | 1 [25] | 1-7/8 [48] | 1-5/8 [41] | 2-7/8 [73] | 13 [6]                | 11 [71]                                       |

**ENGINEERING SPECIFICATION: ZURN ZN415S-HD**

Floor and shower drain, Dura-Coated cast iron body with bottom outlet, combination invertible membrane clamp and adjustable collar with seepage slots and "TYPE S" polished nickel bronze square heavy-duty strainer.

**OPTIONS** (Check/specify appropriate options)

| PIPE SIZE         | (Specify size/type) OUTLET | 'E' BODY HT. DIM. |
|-------------------|----------------------------|-------------------|
| 2,3,4 [51,76,102] | _____ IC Inside Caulk      | 4-3/16 [106]      |
| 2,3,4 [51,76,102] | _____ IG Inside Gasket     | 4-3/16 [106]      |
| 2 [51]            | _____ IP Threaded          | 2-7/16 [62]       |
| 3 [76]            | _____ IP Threaded          | 2-3/4 [70]        |
| 4 [102]           | _____ IP Threaded          | 2-13/16 [71]      |
| 2,3,4 [51,76,102] | _____ NH No-Hub            | 3-13/16 [97]      |
| 2,3,4 [51,76,102] | _____ NL Neo-Loc           | 3-7/8 [98]        |

**PREFIXES**

\_\_\_\_\_ ZN D.C.C.I. Body Assembly w/ Polished Nickel Bronze Top\*

**SUFFIXES**

- \_\_\_\_\_ -AR Acid Resisting Epoxy Coated Cast Iron
- \_\_\_\_\_ -G Galvanized Cast Iron
- \_\_\_\_\_ -P Trap Primer Connection (Specify 1/2 [13] or 3/4 [19])
- \_\_\_\_\_ -PC Protective Cover
- \_\_\_\_\_ -SA Stabilizer Assembly (See Z1035)
- \_\_\_\_\_ -SQ Stabilizer Q-deck (See Z1035-Q)
- \_\_\_\_\_ -TC Neo-Loc Test Cap Gasket (2,3,4 [51,76,102] NL Outlet Only)
- \_\_\_\_\_ -U 1-3 [25-76] High Extension Adapter
- \_\_\_\_\_ -VP Vandal-Proof Secured Top

\* Regularly furnished unless otherwise specified.