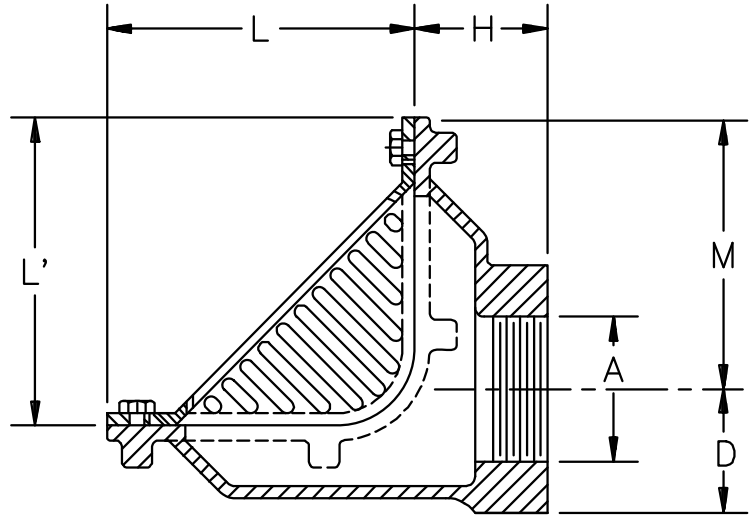
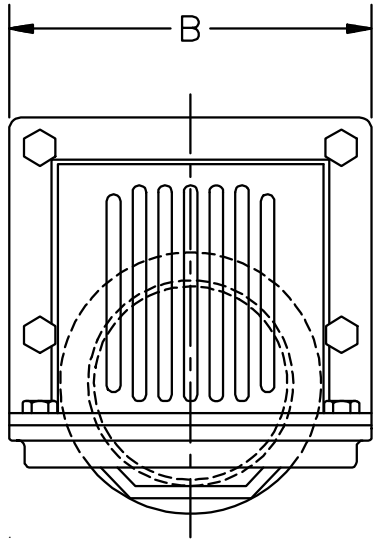




**Z-187-81 6" x 7" OBLIQUE
SCUPPER
DRAIN**

T A G _____

Dimensions Subject to Manufacturing Tolerances



A Pipe Size Inches	Dimensions In Inches						Approx. Wt. Lbs.	Grate Open Area Sq. In.
	B	D	H	L	L'	M		
3	7-1/2	2-1/2	2-3/4	6-3/8	6-3/8	5-5/8	22	20

ENGINEERING SPECIFICATION: ZURN Z-187-81 6" x 7" Scupper drain, Dura-Coated cast iron body with reversible back or bottom outlet, oblique grate with 90° combination frame and membrane flashing clamp. Outlet centered to create water dam.

OPTIONS (Check/specify appropriate options)

OUTLET (Specify type)

___ **IP** Threaded
___ **NH** No-Hub

PIPE SIZE

___ 3"
___ 3"

**'E' BODY HT.
DIMENSION**

See Chart

PREFIXES

___ **Z-** D.C.C.I. Body with Grate*
___ **ZB-** D.C.C.I. Body with Polished Bronze Grate
___ **ZN-** D.C.C.I. Body with Polished Nickel Bronze Grate
___ **ZRB-** D.C.C.I. Body with Plain Bronze Grate

SUFFIXES

___ **-FS** Flat Strainer (ZB or ZN)
___ **-G** Galvanized Cast Iron
___ **-HD** 5-3/4" High Dome
___ **-VP** Vandal Proof Secured Top
___ **-45** 45° Side Outlet Body
(Previously Z-186)

*REGULARLY FURNISHED UNLESS OTHERWISE SPECIFIED

REV. _____ DATE: 1/12/95 C.N. NO. 70618

DWG. NO. P-14128 PRODUCT NO. Z-187-81