



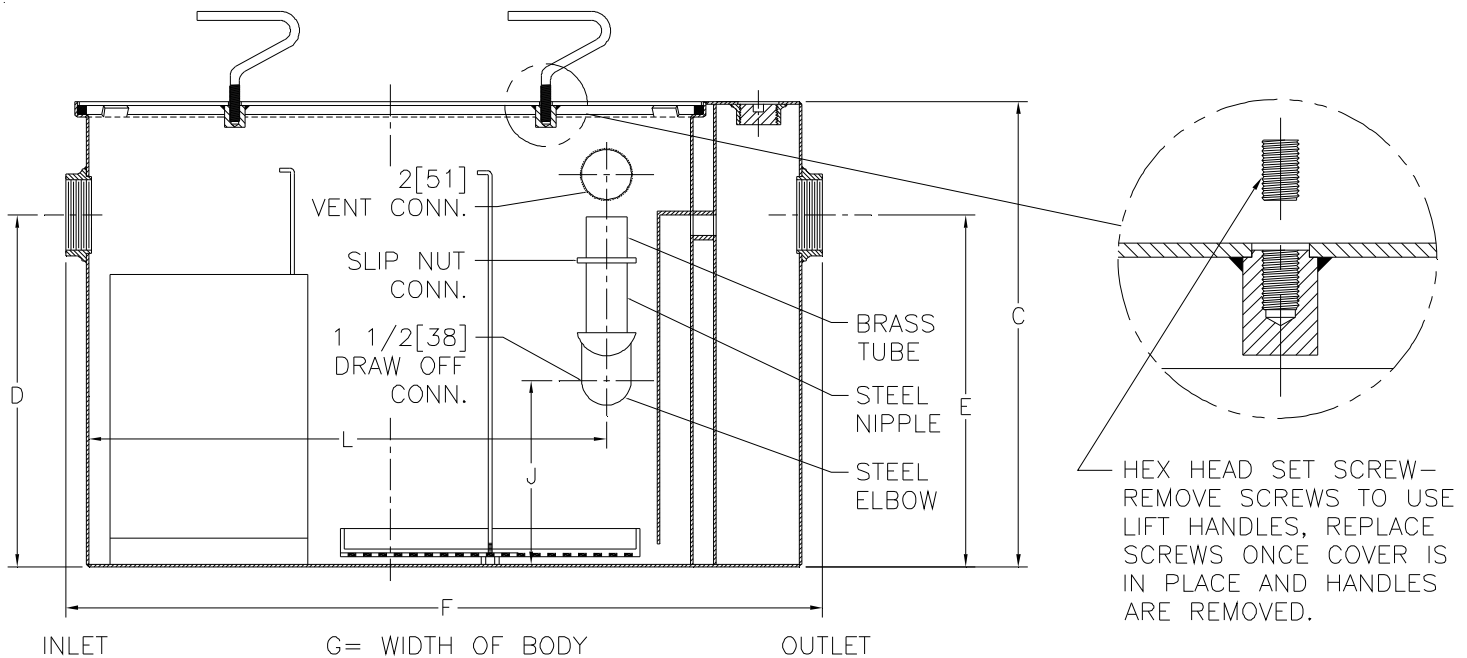
Z1188-160

SPECIFICATION SHEET

SIZE 250 LARGE CAPACITY OIL INTERCEPTOR WITH INTEGRAL EXTENSION AND HEAVY-DUTY COVER

TAG _____

Dimensional Data (inches and [mm]) are Subject to Manufacturing Tolerances and Change Without Notice



| Extension Designation -E | Flow Rate G.P.M. [L/min.] | Inlet/Outlet Size | Water Capacity Gal. [L] | No. of Covers | C | D/E | F | G | J | L |
|--------------------------|---------------------------|-------------------|-------------------------|---------------|----------------|----------|-----------|---------------|--------------|---------------|
| E 31 5/16 | 250 [946] | 6 [152] | 460 [1741] | 2 | 72 5/16 [1837] | 36 [914] | 71 [1803] | 51 3/8 [1305] | 23 3/8 [594] | 56 5/8 [1438] |

ENGINEERING SPECIFICATION: ZURN Z1188-160

Large capacity Acid Resistant Coated interior and exterior fabricated steel oil interceptor with integral extension, bronze cleanout plug and visible double wall trap seal, removable combination pressure equalizing/flow diffusing baffle and sediment bucket, horizontal baffle, adjustable oil drawoff and vent connections either side. Complete with secured, gasketed, non-skid heavy-duty traffic cover rated at 10,000 lbs. [4536 kg.] maximum safe live load with removable lift handles and flow control fitting. Regularly furnished with inlet and outlet in high position.

OPTIONS (Check/specify appropriate options)

PREFIXES

____Z Acid Resistant Coated Fabricated Steel*

SUFFIXES

____-K Anchor flange 1 3/4 [44] down from top and 2 [51] wide.

____-KC Anchor flange 1 3/4 [44] down from top and 2 [51] wide with clamp collar.

*REGULARLY FURNISHED UNLESS OTHERWISE SPECIFIED

| | | |
|------------------|-----------------------|-----------------|
| REV. | DATE: 03/17/10 | C.N. NO. 110849 |
| DWG. NO. P-15859 | PRODUCT NO. Z1188-160 | |

ZURN INDUSTRIES, LLC ♦ SPECIFICATION DRAINAGE OPERATION ♦ 1801 Pittsburgh Ave. ♦ Erie, PA 16514

Phone: 814/455-0921 ♦ Fax: 814/454-7929 ♦ World Wide Web: www.zurn.com

In Canada: ZURN INDUSTRIES LIMITED ♦ 3544 Nashua Drive ♦ Mississauga, Ontario L4V1L2 ♦ Phone: 905/405-8272 Fax: 905/405-1292