



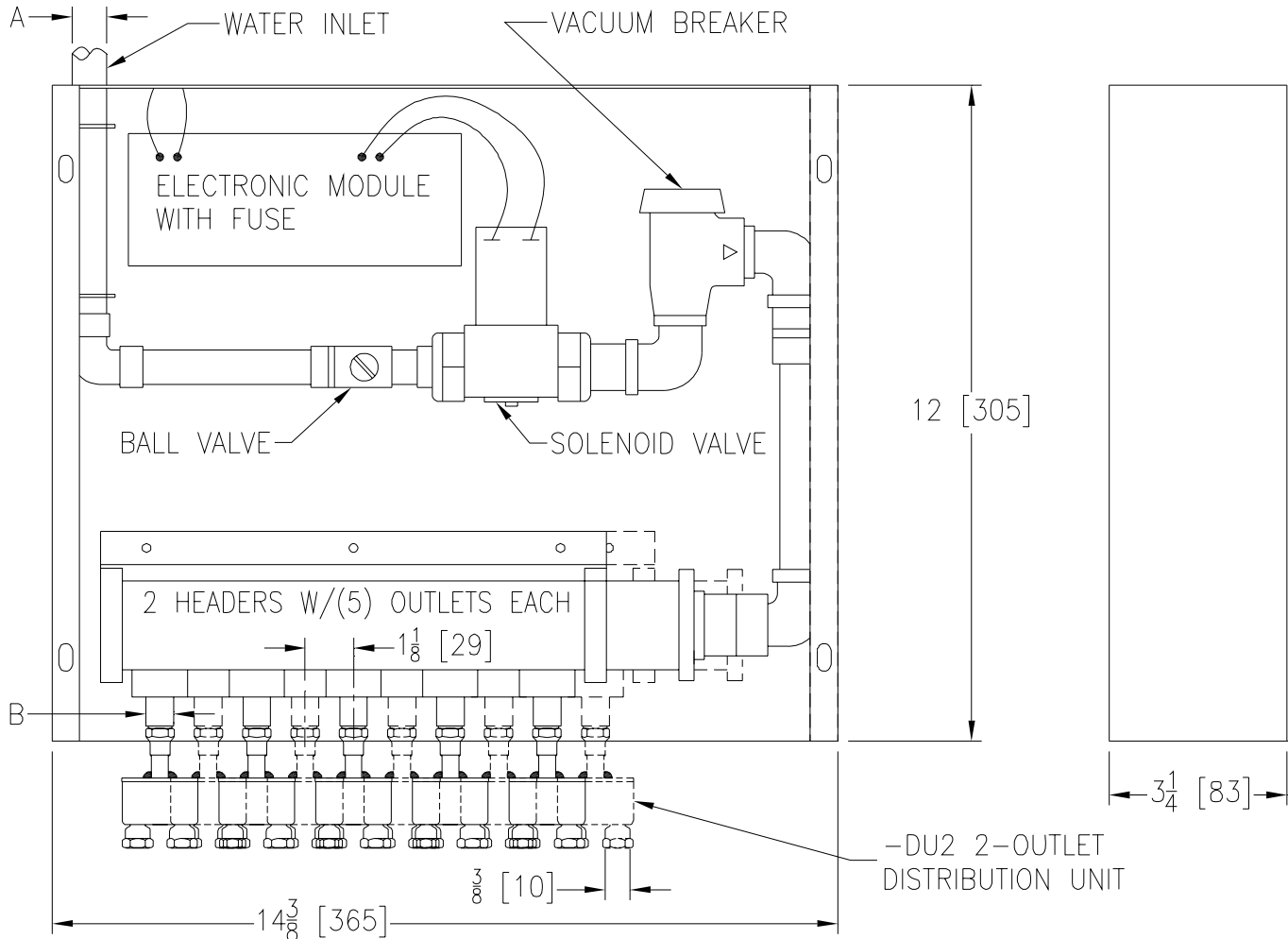
Z1020-78

ELECTRONIC TRAP PRIMER W/ 20 OUTLETS AND COPPER WATERWAY

SPECIFICATION SHEET

TAG _____

Dimensional Data (inches and [mm]) are Subject to Manufacturing Tolerances and Change Without Notice



Dimensions in Inches		Approx. Wt. Lbs. [kg]
A	B	
1/2 [13]	1/2 [13]	12 [5]

ENGINEERING SPECIFICATION: ZURN Z1020-78

Electronic trap primer programmed as standard to provide a six second water injection to traps every twenty-four hours*, complete with galvanized steel combination surface or recessed mount box and cover, 1/2 [13] solder copper inlet connection, brass ball type stop valve, slow closing 24 VAC solenoid valve with integral strainer, 120 - 24 VAC transformer, brass atmospheric vacuum breaker, copper waterway, and two anti-scaling multi-port manifolds with five 1/2 [13] Female I.P.S. outlet connections. All outlets provided with -DU2 (2-Outlet Distribution Unit) for a total of twenty outlet connections.

Note: Distribution unit outlets are 3/8 N.P.T.

*REGULARLY FURNISHED UNLESS OTHERWISE SPECIFIED

REV.	DATE: 3/18/09	C.N. NO. 99818	
DWG. NO. P-15677	PRODUCT NO. Z1020-78		