



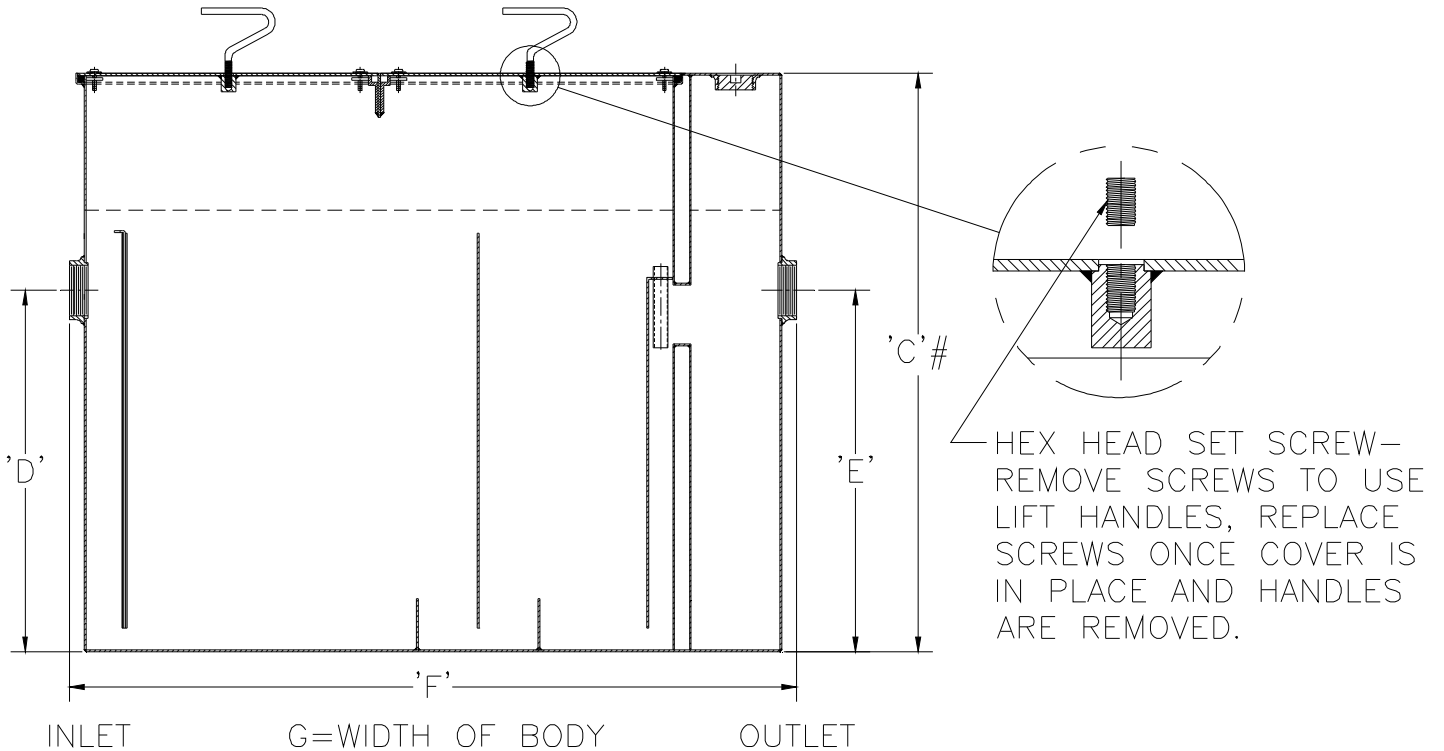
Z1172-166

SPECIFICATION SHEET

**LARGE CAPACITY SIZE 1300 GREASE INTERCEPTOR
WITH EXTENSION AND HEAVY DUTY COVER**

TAG _____

Dimensional Data (inches and [mm]) are Subject to Manufacturing Tolerances and Change Without Notice



** Location of inlet must be maintained at the 'D' dimension listed for each size.

Size	Inlet/Outlet Size**	Flow Rate GPM. [L]	Capacity		No. of Covers	Approx. Wt. Lbs. [kg]	Dimensions in Inches			
			Water Gal. [L]	Grease Lbs. [kg]			C #	D/E	F	G
1300	4 [102]	200 [756]	270 [1021]	400 [182]	2	1016 [461]	68 1/2 [1740]	29 7/8 [759]	61 [1549]	43 5/8 [1108]

ENGINEERING SPECIFICATION: ZURN Z1172-166

Large capacity Acid Resistant Coated interior and exterior fabricated steel grease interceptor, rated at 200[756] GPM and 400[182] Lbs. grease capacity, with internal air relief by-pass, bronze cleanout plug and visible double wall trap seal with removable pressure equalizing/flow diffusing baffle. Gasketed non-skid secured cover with removable lift handles, complete with flow control fitting. Acid resistant coated interior and exterior fabricated steel extension section built integral to the interceptor body, and heavy duty cover. Regularly furnished with inlet and outlet in high position.

OPTIONS (Check/specify appropriate options)

PREFIXES

- ___ **Z** Acid Resistant Coated Fabricated Steel*
- ___ **ZS** All Type 304 Fabricated Stainless Steel

SUFFIXES

- ___ **-AL** Aluminum cover
- ___ **-K** Anchor flange 1 3/4 [44] down from top and 2 [51] wide. No additional extension is required.
- ___ **-KC** Anchor flange 1 3/4 [44] down from top and 2 [51] wide with clamp collar. No additional extension is required.
- ___ **-L** Angle type (Z1108-L) flow control device.

'C' Dim's shown are standard interceptor heights. Add extension height needed to obtain overall 'C' as specified

*REGULARLY FURNISHED UNLESS OTHERWISE SPECIFIED

REV.	DATE: 06/21/13	C.N. NO. 129538
PROD./DWG. NO. Z1172-166		