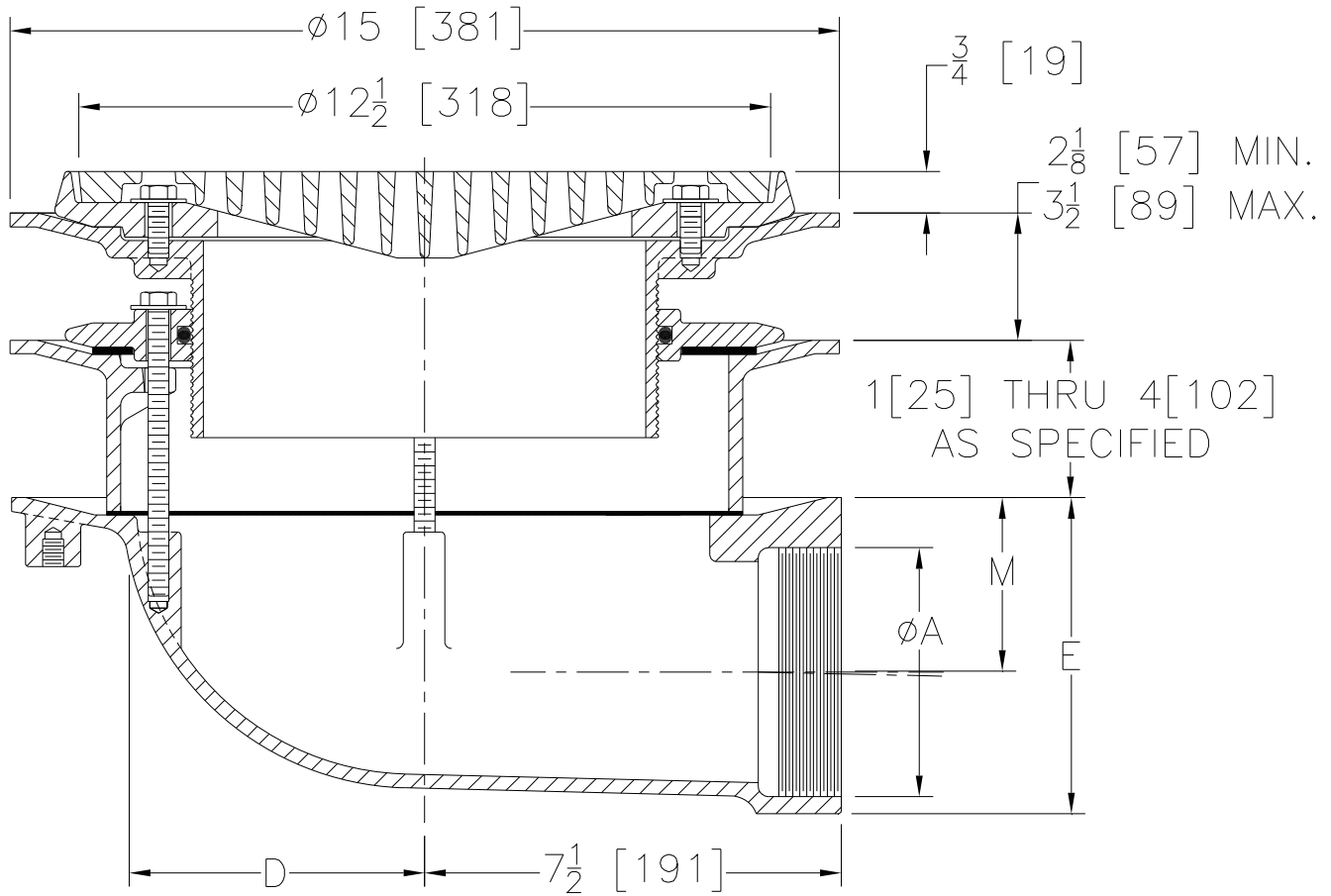


Dimensional Data (inches and [mm]) are Subject to Manufacturing Tolerances and Change Without Notice



Dimensions in inches [mm]			Approx Wt. lbs [kg]	Open Area in ² [cm ²]
A Pipe Size	D	M		
2 [51]	5-1/2 [140]	4-1/4 [108]	32 [15]	32 [203]
3 [76]		3-3/4 [95]	33 [15]	
4 [102]		3-1/4 [83]	34 [15]	
6 [152]	5-7/8 [159]	4-1/4 [108]	37 [17]	

ENGINEERING SPECIFICATION: ZURN Z100-E-EA-FG-90
15" [381mm] Diameter roof drain. 90° threaded side outlet
body with combination membrane flashing clamp/gravel guard,
static extension, adjustable extension, secondary clamping
collar with o-ring and flush grate.

OPTIONS (Check/specify appropriate options)

PIPE SIZE

2,3,4 [51,76,102]
6 [152]

(Specify size/type) **OUTLET**

____ IP Threaded
____ IP Threaded

E BODY HT. DIM.

5-3/4 [146]
7-7/8 [200]

PREFIXES

____ Z D.C.C.I. Body and Grate*

SUFFIXES

____ -AR	Acid Resistant Epoxy Coated	____ -SC	Secondary Clamp Collar
____ -C	Underdeck Clamp	____ -84	Stainless Steel Perforated Gravel Guard
____ -DP	Top-Set Roof Deck Plate (Replaces both -C & -R)	____ -85	Stainless Steel Perforated Extension
____ -G	Galvanized Cast Iron	____ -89	2 [51] High External Water Dam
____ -R	Roof Sump Receiver		

* Regularly furnished unless otherwise specified.