

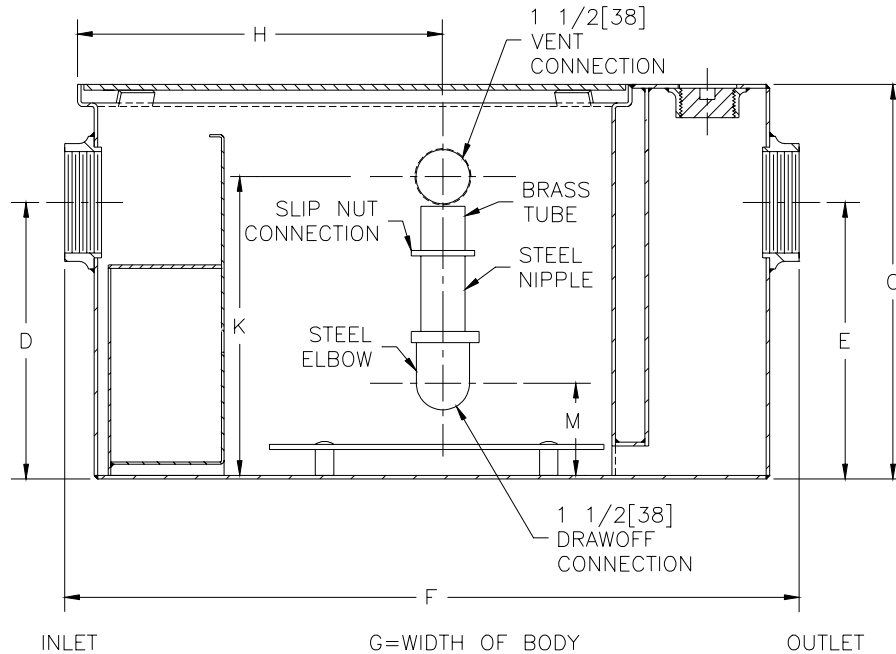


# Z-1186-88

## STAINLESS STEEL OIL INTERCEPTOR

TAG \_\_\_\_\_

Dimensional Data (inches and [ mm ]) are Subject to Manufacturing Tolerances and Change Without Notice



Size	Inlet/Outlet Size **	Flow Rate GPM [L]	Water Cap. Gal. [L]	Approx. Wt.Lbs. [kg]	Dimensions In Inches						
					C	D/E	F	G	H	K	M
300	2 [50]	10 [38]	7 [26]	56 [25]	13 5/8 [346]	8 1/8 [206]	22 5/8 [575]	14 [356]	11 5/8 [295]	10 5/8 [270]	4 5/16 [110]
400	2 [50]	15 [57]	9 [34]	77 [35]	14 [356]	8 1/4 [210]	22 3/4 [578]	14 1/8 [359]	11 5/8 [295]	11 [279]	4 7/16 [113]
500	3 [75]	20 [76]	10 [38]	106 [48]	15 1/2 [394]	9 3/8 [238]	24 5/8 [625]	16 3/4 [425]	13 1/4 [336]	12 1/2 [318]	5 9/16 [141]
600	3 [75]	25 [94]	16 [60]	116 [53]	18 1/4 [464]	11 3/4 [298]	27 1/2 [698]	17 1/4 [438]	16 [406]	15 1/4 [387]	6 1/4 [159]
700	3 [75]	35 [132]	21 [79]	140 [64]	19 3/4 [502]	12 1/2 [318]	29 7/8 [759]	19 7/8 [505]	16 3/8 [416]	16 3/4 [425]	6 7/16 [164]
800	3 [75]	50 [189]	30 [113]	171 [78]	24 1/4 [616]	14 1/4 [362]	31 3/4 [806]	22 1/2 [572]	17 1/4 [438]	21 1/4 [540]	8 3/16 [208]

**ENGINEERING SPECIFICATION:** ZURN Z-1186-88 All type 304 stainless steel oil interceptor, stainless steel cleanout plug and visible double wall trap seal, removable combination pressure equalizing/flow diffusing baffle and sediment bucket, horizontal baffle, adjustable oil drawoff and vent connections either side, secured gasketed non-skid cover, complete with cast iron flow control fitting. Regularly furnished with inlet and outlet in high position.

**OPTIONS** (Check/specify appropriate options)

**PREFIXES**

\_\_\_ Z- All Type 304 Stainless Steel

**SUFFIXES**

- \_\_\_ -E Stainless Steel extension section. (Specify 'C' Dim. required) for recessed installation.
- \_\_\_ -K Stainless Steel Anchor flange 1 3/4 [44] down from top and 2 [51] wide. A 3 [76] minimum extension height is required when anchor flange (-K) option is specified. (Specify 'C' Dim. height required.)
- \_\_\_ -KC Stainless Steel Anchor flange 1 3/4 [44] down from top and 2 [51] wide with clamp collar.

\*\* Inlet and outlet sizes shown indicate standard operating sizes and flow control setting. Size #300 and #400 will have 3 [76] connections reduced to 2 [51] standard. Size #500 thru #800 will have connections reduced to 3 [76] as standard. If changed, flow control and air relief by-pass must be adjusted accordingly

<b>REV.</b>	<b>DATE: 7/2/97</b>	<b>C.N. NO. 78084</b>
<b>DWG. NO. P-14494 PRODUCT NO. Z-1186-88</b>		