



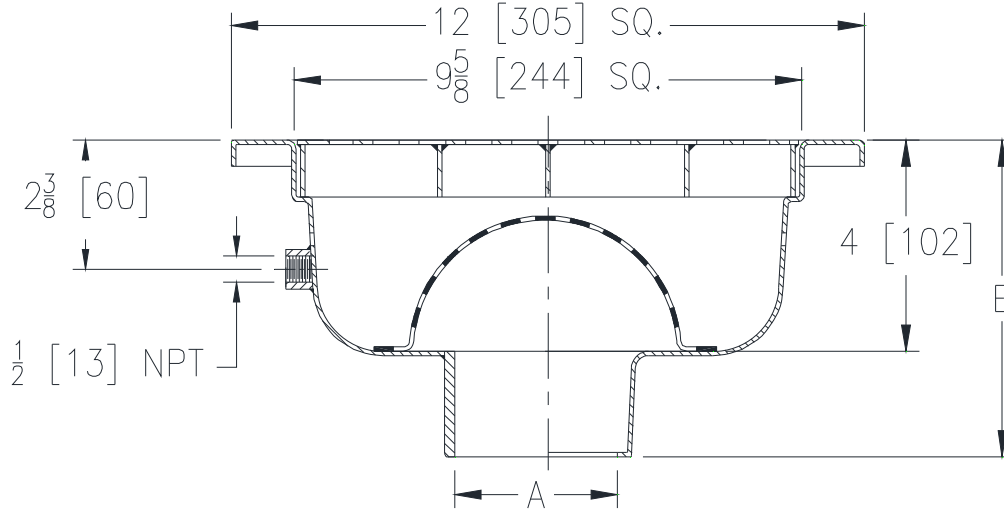
# Z1749-P

## 12 X 12 [305 X 305] SANI-FLOR RECEPTOR WITH 4 [102] SUMP DEPTH AND 1/2 [13] TRAP PRIMER CONNECTION

SPECIFICATION SHEET

TAG \_\_\_\_\_

Dimensional Data (inches and [ mm ]) are Subject to Manufacturing Tolerances and Change Without Notice



### Engineering Specification: ZURN Z1749-P

12 x 12 x 4 [305 x 305 x 102] deep, 16 gage, All Type 304 (CF8) Stainless Steel light-duty Sani-Flor receptor with non-tilt, loose set full grate with 1/2 [13] square openings, anti-splash stainless steel interior dome strainer, and 1/2 [13] trap primer connection.

| A- Pipe Size In.  | Approx. Wt. Lbs. [kg] | Grate Open Area Sq. In. [cm <sup>2</sup> ] |
|-------------------|-----------------------|--------------------------------------------|
| 2-3-4 [51-76-102] | 15 [7]                | 23 [148]                                   |

### Options (Check/specify appropriate options)

#### PIPE SIZE

2 thru 4 [51 thru 102]  
2 [51]  
3 [76]  
4 [102]  
2 thru 4 [51 thru 102]  
2 thru 4 [51 thru 102]

#### OUTLET (Specify size/type)

\_\_\_ IC Inside Caulk  
\_\_\_ IP Threaded  
\_\_\_ IP Threaded  
\_\_\_ IP Threaded  
\_\_\_ NH No-Hub  
\_\_\_ NL Neo-Loc

#### 'E' BODY HT. DIM.

6-9/16 [167]  
5-5/16 [134]  
5-9/16 [141]  
6-1/16 [154]  
6-1/16 [154]  
5-13/16 [148]

#### Prefixes

\_\_\_ Z Type 304 (CF8) Stainless Steel Body\*  
\_\_\_ ZM Type 316 (CF8M) Stainless Steel

#### Suffixes

|         |                                                                |         |                                                                 |
|---------|----------------------------------------------------------------|---------|-----------------------------------------------------------------|
| ___ -DX | Dex-o-tex Flange                                               | ___ -5  | Grate w/ 4 [102] dia. x 3-3/4 [95] High Funnel                  |
| ___ -HD | Extra Heavy Duty Top Frame & Grate                             | ___ -8  | Grate w/ 8-3/8 x 3-5/8 x 3-3/4 [213 x 92 x 95] High Oval Funnel |
| ___ -HP | Heel-Proof Grate                                               | ___ -15 | Solid Cover                                                     |
| ___ -SG | Solid Gasketed Cover                                           | ___ -16 | 1/2 Solid Cover                                                 |
| ___ -TC | Neo-Loc Test Cap Gasket (2 - 4 [51-102] NL Bottom Outlet Only) | ___ -17 | 3/4 Solid Cover                                                 |
| ___ -VP | Vandal-Proof Secured Top                                       | ___ -18 | Solid Cover w/ 3 [76] Square Center Opening                     |
| ___ -Y  | Sediment Bucket                                                | ___ -19 | Full Hinged Grate                                               |
| ___ -YS | Suspended Sediment Bucket                                      | ___ -20 | Full Hinged Cover                                               |
| ___ -1  | (Less) Grate                                                   |         |                                                                 |
| ___ -2  | 1/2 Grate                                                      |         |                                                                 |
| ___ -3  | 3/4 Grate                                                      |         |                                                                 |
| ___ -4  | Full Grate w/ 3 [76] Square Opening                            |         |                                                                 |

\* Regularly furnished unless otherwise specified.