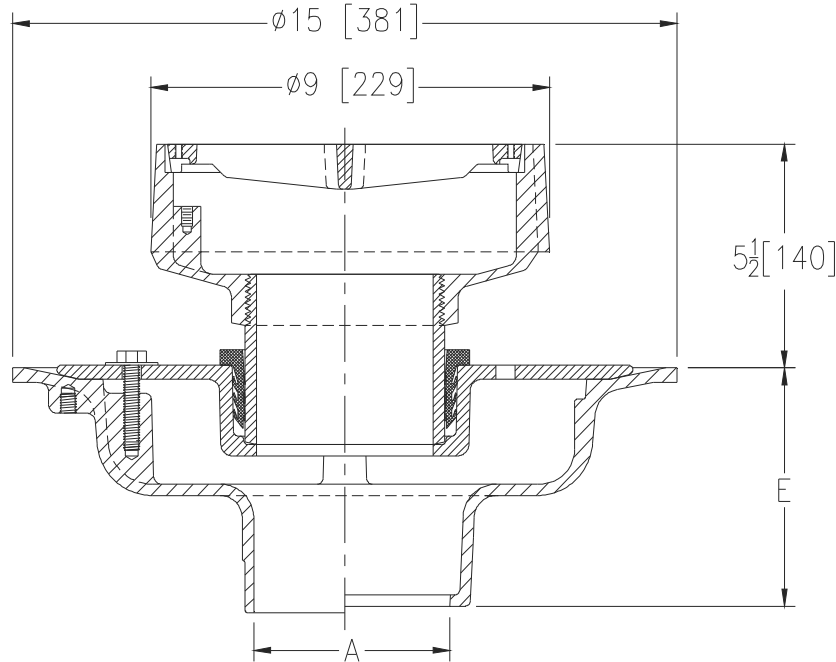




Z624-112

ISOLATION DECK DRAIN W/ EXTENDED STANDPIPE

Dimensional Data (inches and [mm]) are Subject to Manufacturing Tolerances and Change Without Notice



A Pipe Size [mm]	Approx. Wt. Lbs. [kg]	Grate Open Area Sq. In. [cm ²]
2,3,4 [51,76,102]	42 [19]	18 [116]
5,6 [127,152]		

ENGINEERING SPECIFICATION: Z624-112

Floating slab drain, Dura-Coated cast iron upper and lower bodies, clamp collar with weep holes, neoprene flex gasket, 4-5/16 [125] high isolation nipple and slotted grate.

OPTIONS (Check/specify appropriate options)

PIPE SIZE

- 2,3,4,5,6 [51,76,102,127,152]
- 2,3,4,6 [51,76,102,152]
- 2,3,4,5,6 [51,76,102,127,152]
- 2,3,4,5,6 [51,76,102,127,152]
- 2,3,4 [51,76,102]

(Specify size/type) OUTLET

- _____ IC Inside Caulk
- _____ IG Inside Gasket
- _____ IP Threaded
- _____ NH No-Hub
- _____ NL Neo-Loc

'E' BODY HT. DIM.

- 5-1/4 [133]
- 5-1/4 [133]
- 3-3/4 [95]
- 5-1/4 [133]
- 4-5/8 [117]

PREFIXES

- _____ Z D.C.C.I. Body and Top*
- _____ ZB D.C.C.I Body w/ Polished Bronze Top (Add 3/16 [5] to 4-15/16 [125] Dim)
- _____ ZN D.C.C.I Body w/ Polished Nickel Bronze Top (Add 3/16 [5] to 4-15/16 [125] Dim)

SUFFIXES

- _____ -C Underdeck Clamp (Lower Body)
- _____ -DX Dex-o-tex Flange (Upper Body)
- _____ -G Galvanized Cast Iron
- _____ -K Seepage Pan (Upper Body)
- _____ -KC Seepage Pan with Clamp Collar (Upper Body)
- _____ -LH Less Weep Holes in Clamp Collar
- _____ -R Sump Receiver (Lower Body)
- _____ -SC Solid Cover
- _____ -SD Longer Standpipe (Specify Height Required)
- _____ -SG Solid Gasketed Cover
- _____ -TS Top Secured with Slotted Screws
- _____ -VP Vandal-Proof Secured Top
- _____ -Y Sediment Bucket (Upper Body)

* Regularly furnished unless otherwise specified.