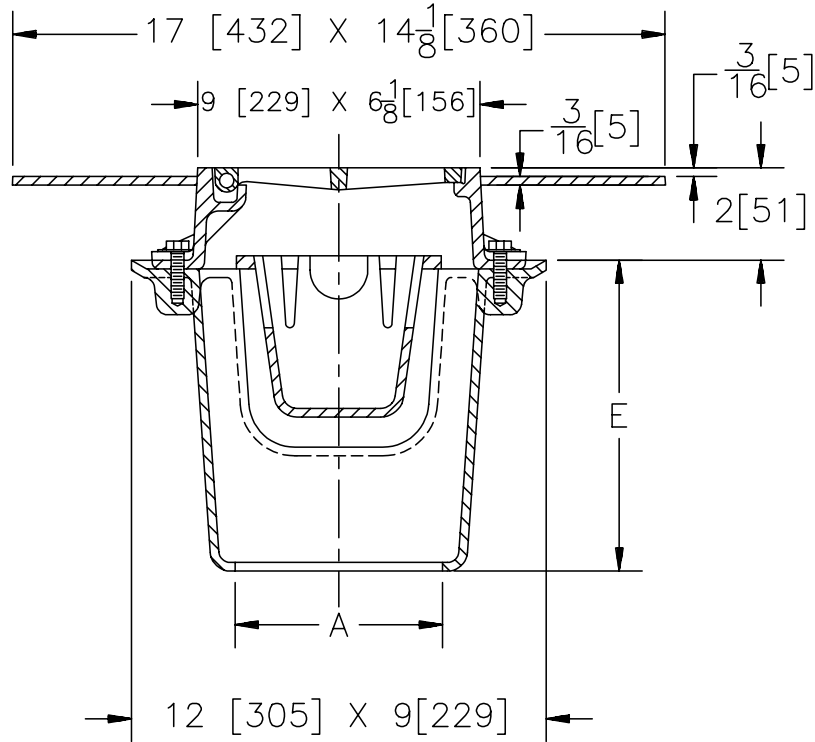




Z-585-75
6" X 9" [152 X 229]
MEDIUM DUTY HINGED DRAIN

Dimensional Data (inches and [mm]) are Subject to Manufacturing Tolerances and Change Without Notice



A- Pipe Size In.	Approx. Wt. Lbs. [kg]	Grate Open Area Sq. In. [cm ²]
2-3-4 [50-75-100]	30 [14]	15 [97]

ENGINEERING SPECIFICATION: ZURN Z-585-75 6x9 [152x229] Top drain, Dura-Coated cast iron body with bottom outlet, seepage pan and combination membrane flashing clamp and frame with Dex-o-Tex flange for medium duty cast iron hinged slotted grate with suspended sediment bucket.

OPTIONS (Check/specify appropriate options)

PIPE SIZE

- 2, 3, 4 [50, 75, 100]
- 2, 3, 4 [50, 75, 100]
- 2, 3, 4 [50, 75, 100]
- 2, 3, 4 [50, 75, 100]

(Specify size/type) **OUTLET**

- _____ IC Inside Caulk
- _____ IG Inside Caulk w/Sealtrol Gskt.
- _____ IP Threaded
- _____ NH No-Hub (IP w/Z1040-1)

'E' BODY HT. DIM.

- 6 3/4 [171]
- 6 3/4 [171]
- 5 1/4 [133]

PREFIXES

- _____ Z- D.C.C.I. Body and Grate*
- _____ ZB- D.C.C.I. Body with Polished Bronze Grate (Add 3/16 [5] to E Dim.)
- _____ ZN- D.C.C.I. Body with Polished Nickel Bronze Grate (Add 3/16 [5] to E Dim.)

SUFFIXES

- _____ -G Galvanized Cast Iron
- _____ -V Backwater Valve (See Z-1099)
- _____ -VP Vandal Proof Secured Top

*REGULARLY FURNISHED UNLESS OTHERWISE SPECIFIED

REV.	DATE: 07/28/95	C.N. NO. 72577
DWG. NO. P-14211 PRODUCT NO. Z-585-75		