

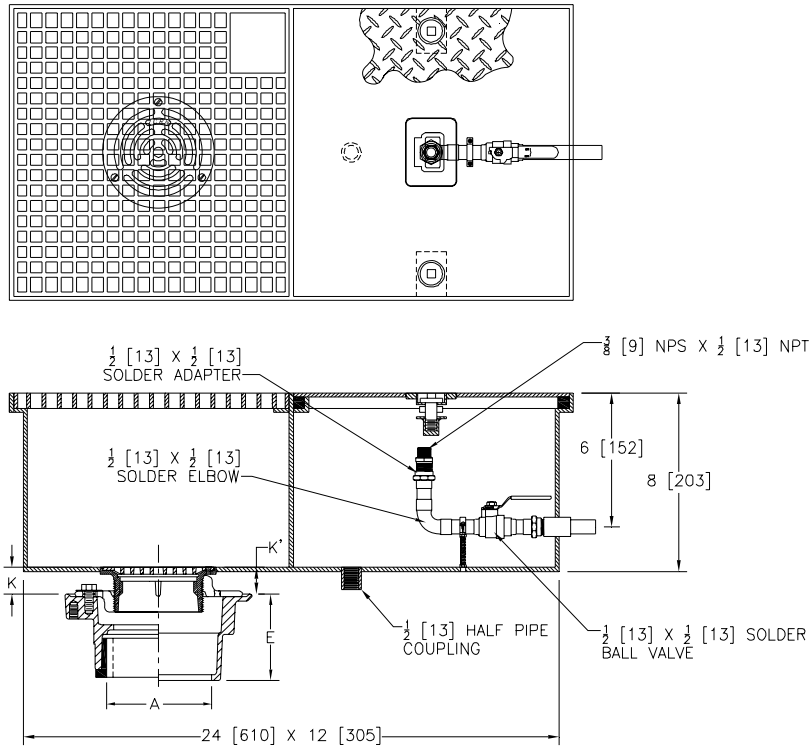


Z1464-78 COMBINATION WATER SUPPLY CONTROL BOX AND DRAINAGE COMPARTMENT

SPECIFICATION SHEET

TAG _____

Dimensional Data (inches and [mm]) are Subject to Manufacturing Tolerances and Change Without Notice



Dimensions In Inches						Approx. Wt. Lbs. [kg]	Strainer Open Area Sq. In. [cm ²]
A - Pipe Size	B Strainer Dia.	K		K'			
		Min.	Max.	Min.	Max.		
2-3 [51-76]	5[127]	1/2[13]	1 5/8 [41]	1 3/8 [35]	2 3/8 [60]	100 [45]	83 [535]

ENGINEERING SPECIFICATION: ZURN Z1464-78

All type 304 fabricated stainless steel combination water supply box and drainage compartment. Supply box furnished with secured, gasketed, non-skid cover with lift handle, 1/2 [13] bronze quarter-turn ball valve, 5-FT [1.5-m] length of 3/8 [9] compression braided stainless steel hose (not shown in drawing), and 1/2 [13] drain port. Drainage compartment furnished with stainless steel bar grate and ZS415-5B drain body assembly.

OPTIONS (Check/specify appropriate options)

PREFIXES

_____ ZS Type 304 Stainless Steel Box Assembly w/ D.C.C.I. Body Assembly *

PIPE SIZE

- 2 thru 3 [51 thru 76]
- 2 thru 3 [51 thru 76]
- 2 [51]
- 3 [76]
- 2 thru 3 [51 thru 76]
- 2 thru 3 [51 thru 76]

(Specify size/type) **OUTLET**

- _____ IC Inside Caulk
- _____ IG Inside Gasket
- _____ IP Threaded
- _____ IP Threaded
- _____ NH No-Hub
- _____ NL Neo-Loc

'E' BODY HT. DIM.

- 3 7/8 [98]
- 3 7/8 [98]
- 2 3/8 [60]
- 2 5/8 [67]
- 3 7/8 [98]
- 3 3/4 [95]

SUFFIXES

- _____ -12FIP 3/8 [10] Compression By 1/2 [13] FIP Stainless Steel Hose
- _____ -AR Acid Resisting Epoxy Coated Cast Iron
- _____ -G Galvanized Cast Iron
- _____ -K Anchor Flange 1 3/4 [44] Down From Top and 2 [51] wide
- _____ -P Trap Primer Connection (Specify 1/2 [13] or 3/4 [19])
- _____ -TC Neo-Loc Test Cap Gasket
(2 - 3 [51 - 76] NL Outlet Only)

REV. A	DATE: 2/8/07	C.N. NO. 96172
DWG. NO. P-15373	PRODUCT NO. Z1464-78	

*REGULARLY FURNISHED UNLESS OTHERWISE SPECIFIED