

**ZQF1201-N\_4-F\_**

ONE-PIECE COMBINATION FOOT/FACEPLATE EZCARRY®  
HORIZONTAL HIGH PERFORMANCE SIPHON JET NO-HUB  
WATER CLOSET CARRIER SYSTEM W/ NON-ADJUSTABLE  
COUPLING

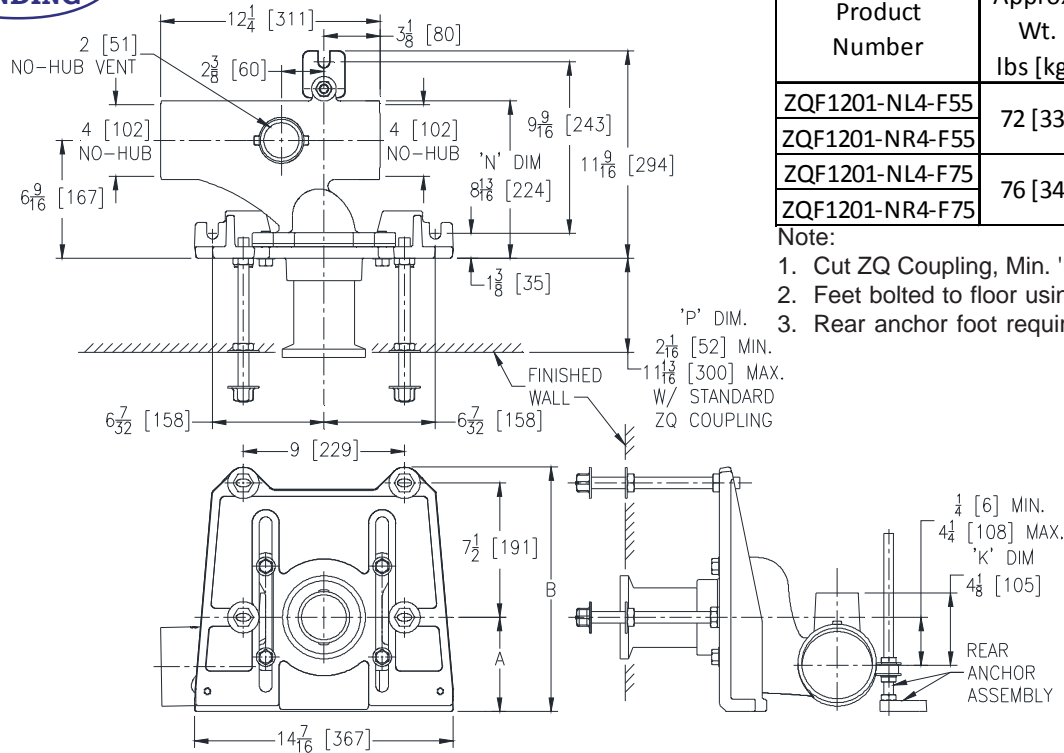
## SPECIFICATION SHEET

TAG \_\_\_\_\_

**PATENT  
PENDING**

Dimensional Data (inches and [mm]) are Subject to Manufacturing Tolerances and Change Without Notice

## ZQF1201-NR4-F55 Illustrated



Product Number	Approx. Wt. lbs [kg]	Dimensions in in [mm]	
		A	B
ZQF1201-NL4-F55	72 [33]	5-1/2 [140]	13-7/8 [352]
ZQF1201-NR4-F55			
ZQF1201-NL4-F75	76 [34]	7-1/2 [191]	15-7/8 [403]
ZQF1201-NR4-F75			

**Note:**

1. Cut ZQ Coupling, Min. 'P' Dim. 2-1/16 [52].
2. Feet bolted to floor using min. 1/2 [13] dia. anchors.
3. Rear anchor foot required for secure installation.

**ENGINEERING SPECIFICATION: ZURN ZQF1201-N\_4-F**

EZCarry® One-piece combination floor mounted foot/faceplate horizontal siphon jet water closet carrier system, supplied for ( ) rough-in height, with high performance Dura-Coated cast iron main fitting with hydro-mechanically optimized sweep, 4" [102 mm] no-hub connections and extended 2" [51 mm] vent. Corrosion resistant, non-adjustable 3" [76 mm] dia. X 6" [152 mm] NPT coupling with integral test cap, designed to increase flow velocity and line carry, and labor saving "Neo-Seal" bonded gasket optimizes flow performance while reducing installation steps. Complete system includes one-piece combination foot/faceplate; heavy-duty ½" [13 mm] rear anchor tie down; fixture bolts, trim and stud protectors. EZCarry® one-piece combination floor mounted foot/faceplate system complies with all applicable requirements of ASME A112.6.1M up to a 500 lbs [227 kg] maximum static load.

**OPTIONS** (Check/specify appropriate options)

- |                        |   |       |   |       |                                |
|------------------------|---|-------|---|-------|--------------------------------|
| <b>ZQF1201-NL4-F55</b> | 4 | [102] | No-Hub Left Hand Inlet with Flow to Right with 5-1/2" | [140] | Non-Adjustable Rough-In Height |
| <b>ZQF1201-NR4-F55</b> | 4 | [102] | No-Hub Right Hand Inlet with Flow to Left with 5-1/2" | [140] | Non-Adjustable Rough-In Height |
| <b>ZQF1201-NL4-F75</b> | 4 | [102] | No-Hub Left Hand Inlet with Flow to Right with 7-1/2" | [191] | Non-Adjustable Rough-In Height |
| <b>ZQF1201-NR4-F75</b> | 4 | [102] | No-Hub Right Hand Inlet with Flow to Left with 7-1/2" | [191] | Non-Adjustable Rough-In Height |

## PREFIXES

- ZQF D.C.C.I. System with NPT Faceplate, Non-Adjustable Coupling\*

## SUFFIXES

- |        |  |        |  |
|--------|--|--------|--|
| ___-A  | Auxiliary Support Assembly<br>(For 'P' Dim. Greater than 18 [457])   | ___-F  | (ZZ Coupling Only)<br>Floor Mounted, Back Outlet Fixture Support   |
| ___-CC | Corrosion Resistant Cast Iron Coupling<br>(2-1/4 to 12 [57 to 305])  | ___-G  | Galvanized Cast Iron   |
| ___-CE | EZ-Set™ Coupling (NPSM 6 [152] ,12 [305] or custom)<br>(NPT 12 [305] or custom)                              | ___-JC | 2 [51] Auxiliary Inlet with 1/8 [3] Bend                           |
| ___-CL | Custom Length Standard Coupling with Integral Test Cap<br>(Specify Length 4, 8, 10, 12 [102, 203, 254, 305]) | ___-M  | Auxiliary Foot Support<br>(for 'P' Dim. 10 thru 18 [254 thru 457]) |
| ___-CS | 2-1/4 [57] Polymer Coupling with Integral Test Cap   | ___-VP | Vandal-Proof Trim  |
|        |  | ___-45 | Finishing Frame for Siphon Jet System                              |
|        |  | ___-50 | Flush Valve Supply Support for Water Closets                       |

\* Regularly furnished unless otherwise specified.

**Zurn Industries, LLC | Specification Drainage Operation**  
1801 Pittsburgh Avenue, Erie, PA U.S.A. 16502 · Ph. 855-663-9876, Fax 814-454-7929  
In Canada | **Zurn Industries Limited**  
3544 Nashua Drive, Mississauga, Ontario L4V 1L2 · Ph. 905-405-8272, Fax 905-405-1292  
[www.zurn.com](http://www.zurn.com)

Rev. -  
Date: 07/25/17  
C.N. No. 137431  
Prod. | Dwg. No. ZQF1201-N 4-F