

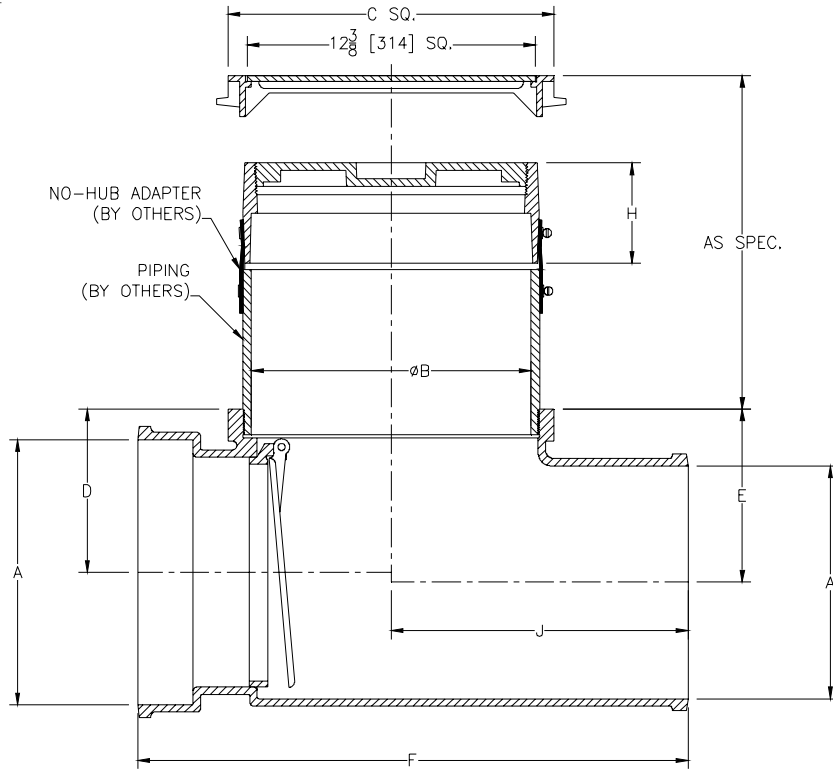


**Z1095-85
BACKWATER VALVE FLAPPER TYPE W/
CLEANOUT AND ACCESS COVER**

SPECIFICATION SHEET

TAG _____

Dimensional Data (inches and [mm]) are Subject to Manufacturing Tolerances and Change Without Notice



Dimensions In Inches								Approx. Wt. Lbs. [kg]
Pipe Size		C	D	E	F	H	J	
A	B							
10 [254]	12 [305]	14 [356]	7 [178]	7 1/2 [190]	23 5/8 [600]	4 1/4 [108]	12 3/4 [324]	145 [66]

ENGINEERING SPECIFICATION: ZURN Z1095-85 Backwater Valve, Dura-Coated cast iron body, hub inlet and offset spigot outlet, automatic bronze flapper type backwater valve, which hangs slightly open during periods on non-operation. Complete with non-adjustable floor cleanout with Dura-Coated cast iron body, gas and watertight ABS tapered thread plug, and square hinged Dura-Coated cast iron scoriated secured access panel and frame with anchor lugs set flush with floor for light duty applications.

CONNECTIONS (Check/specify appropriate options)

PIPE SIZE

10 [254]

(Specify size)

_____ HB X SP

CONNECTION

Hub x Spigot

PREFIXES

- _____ Z D.C.C.I. Body, Cleanout, and Access Panel with Scoriated Cover.*
- _____ ZB D.C.C.I. Body and Cleanout with Bronze Access Panel and Polished Scoriated Cover
- _____ ZN D.C.C.I. Body and Cleanout with Nickel Bronze Access Panel and Polished Scoriated Cover.

SUFFIXES

- _____ -A Raised Head Plug
- _____ -BP Bronze Plug
- _____ -G Galvanized Cast Iron
- _____ -ST Smooth Top
- _____ -VP Vandal-Proof Screws

REV.	DATE: 3/26/10	C.N. NO. 110913
DWG. NO. P-15877 PRODUCT NO. Z1095-85		

*REGULARLY FURNISHED UNLESS OTHERWISE SPECIFIED