



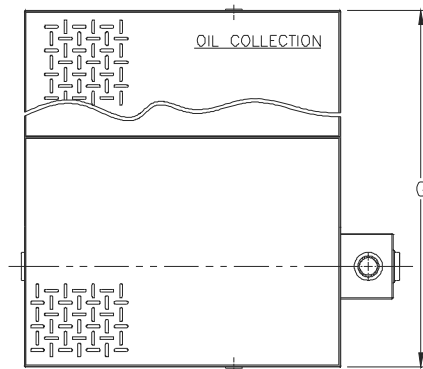
Z1188-ST-168

SIZE 350 LARGE CAPACITY OIL INTERCEPTOR W/
INTEGRAL STORAGE TANK, 22-1/8 [562] INTEGRAL
EXTENSION, AND HEAVY-DUTY COVER

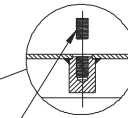
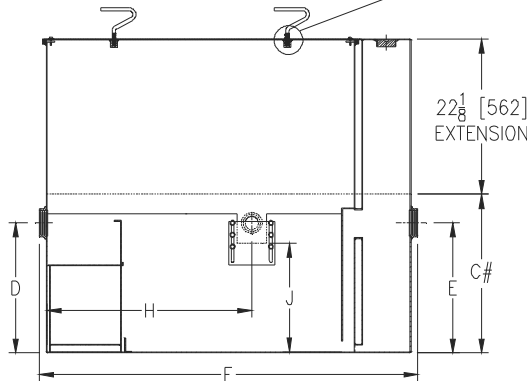
SPECIFICATION SHEET

TAG _____

Dimensional Data (inches and [mm]) are Subject to Manufacturing Tolerances and Change Without Notice



Flow Rate GPM [LPM]	Oil Storage Tank Cap. Gal. [L]	No. of Covers	
		Trap	Tank
350 [1325]	700 [2650]	2	2



HEX HEAD SET SCREW—
REMOVE SCREWS TO USE
LIFT HANDLES, REPLACE
SCREWS ONCE COVER IS
IN PLACE AND HANDLES
ARE REMOVED.

Flow Rate GPM [LPM]	Inlet/ Outlet Size**	Water Capacity Gal. [L]	Approx. Wt. Lbs [kg]	Dimensions in Inches [mm]					
				C#	D/E	F	G	H	J
350 [1325]	6 [152]	1006 [3808]	4000 [1814]	53-1/2 [1359]	43-7/8 [1114]	103-1/8 [2619]	104-3/4 [2661]	61-15/16 [1573]	40 -3/8 [1026]

ENGINEERING SPECIFICATION: ZURN Z1188-ST-168

Acid Resistant Coated interior and exterior fabricated steel oil interceptor, with 22-1/8" [562mm] integral extension, bronze cleanout plug and visible double wall trap seal, removable combination pressure equalizing/flow diffusing baffle and sediment bucket, oil draw-off, vent connections, secured gasketed heavy-duty non-skid traffic cover rated at 10,000 lbs [4536 kg] maximum safe live load, complete with flow control fitting and left hand integral storage tank. Regularly furnished with inlet and outlet in high position.

Note: location of outlet from bottom of interceptor cannot be changed.

OPTIONS (Check/specify appropriate options)

PREFIXES

___ Z Acid Resistant Coated Fabricated Steel*

SUFFIXES

- ___ -K Anchor flange 1-3/4 [44] down from top and 2 [51] wide.
- ___ -KC Anchor flange 1-3/4 [44] down from top and 2 [51] wide with clamp collar.
- ___ -STR Storage tank on right hand side when facing the inlet.

'C' Dimension shows minimum height required for -HD suffix.

* Regularly furnished unless otherwise specified.