



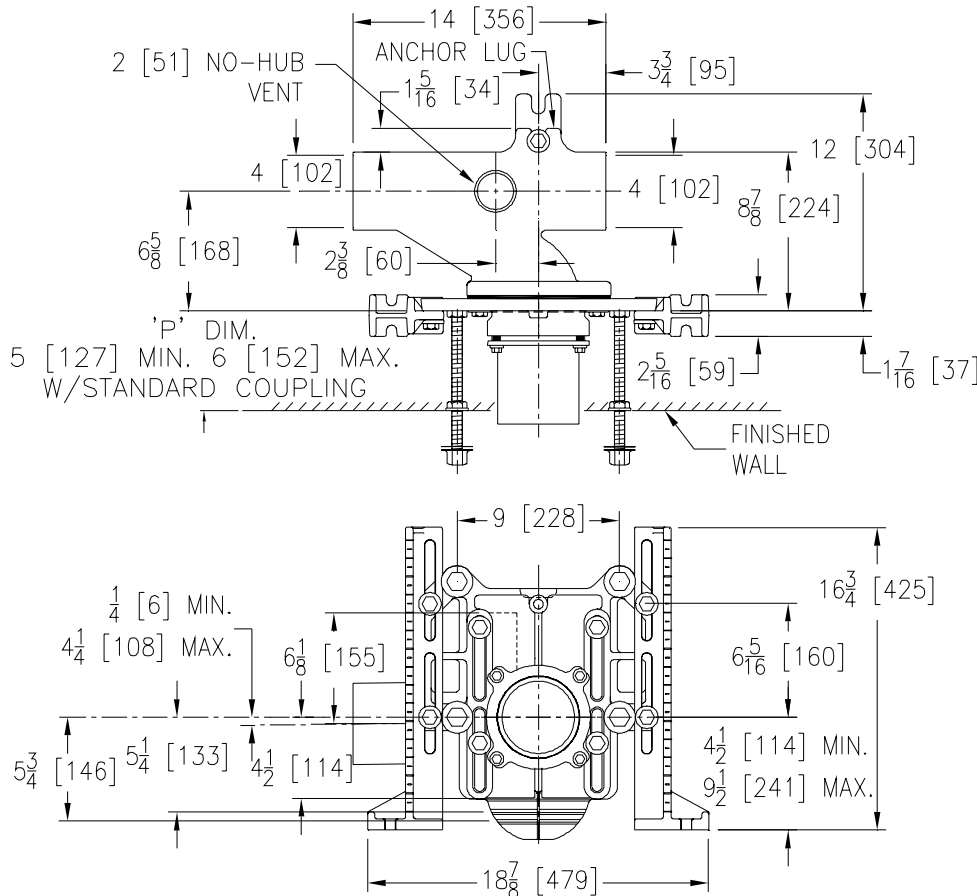
ZC1203-N

ADJUSTABLE HORIZONTAL SIPHON JET NO-HUB W/ COMPRESSION FIT FACEPLATE

SPECIFICATION SHEET

TAG _____

Dimensional Data (inches and [mm]) are Subject to Manufacturing Tolerances and Change Without Notice



Product Number	Approx. Wt. Lbs. [kg]
ZC1203-NL4	70 [32]
ZC1203-NR4	

Note:

1. Min. 'P' Dim. Obtainable=2 [51]
2. Feet bolted to floor using min. 1/2 [13] dia. bolts and back slots on carrier feet.
3. Back anchor foot required for secure installation.

ENGINEERING SPECIFICATION: ZURN ZC1203-N () Adjustable, horizontal siphon jet water closet "Rigid System" with 4 [102] No-Hub connections. Complete with Dura-Coated cast iron right hand, left hand, or double main fitting, with 2 [51] vent, compression fit faceplate, universal floor mounted foot supports, corrosion resistant adjustable 6 [152] long PVC coupling, fixture bolts, trim, and stud protectors. Rear anchor tie down and bonded "Neo-Seal" gasket.

OPTIONS (Check/specify appropriate options)

- ZC1203-NR4** 4 [102] No-Hub Right Hand Inlet with Flow to Left
ZC1203-NL4 4 [102] No-Hub Left Hand Inlet with Flow to Right

PREFIXES

- ___ ZC D.C.C.I. System with Zurn Compression Fit Coupling*
 ___ ZCE D.C.C.I. System with Zurn Compression Fit Coupling and Elongated Fitting

SUFFIXES

- | | |
|---|---|
| <p>___ -A Auxiliary Support Assembly
(For 'P' Dim. Greater than 18 [457])</p> <p>___ -B Blowout Type Fixture Support</p> <p>___ -BC Back Cleanout</p> <p>___ -CL Coupling Length Greater than 12 [305]
(Specified Length Required)</p> <p>___ -F Floor Mounted, Back Outlet Fixture Support</p> <p>___ -G Galvanized Cast Iron</p> <p>___ -M Auxiliary Foot Support
(for 'P' Dim. 10 [254] - 18 [457])</p> | <p>___ -T Threaded Connection</p> <p>___ -VP Vandal-Proof Trim</p> <p>___ -12 Carrier Assembly with 12 [305] Long Coupling</p> <p>___ -29 Mechanical Test Cap Assembly</p> <p>___ -45 Finishing Frame for Siphon Jet System
(for Blow Out System specify -45-B)</p> <p>___ -50 Flush Valve Supply Support for Water Closets</p> |
|---|---|

*REGULARLY FURNISHED UNLESS OTHERWISE SPECIFIED

REV.	DATE: 10/9/06	C.N. NO. 95706
DWG. NO. 82921		PRODUCT NO. ZC1203-N