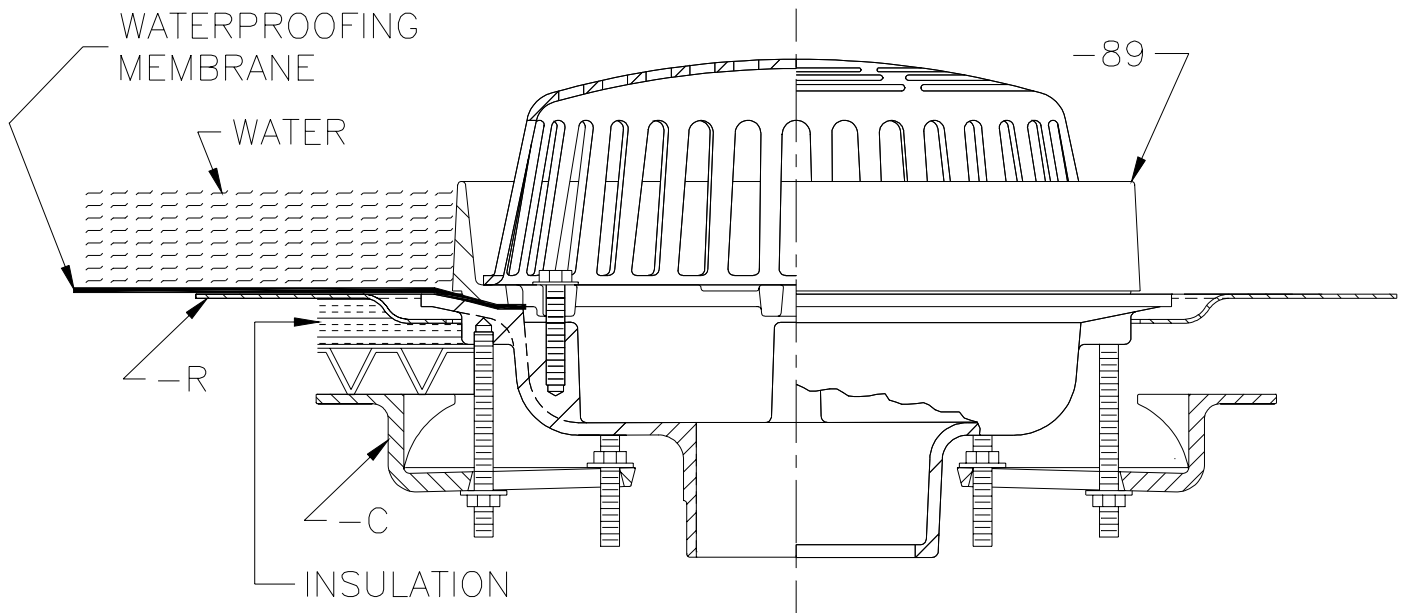




TYPICAL INSTALLATION FOR
Z-100-C-R-89
STEEL DECK WATER INSULATED AND/OR OVERFLOW

Dimensional Data (inches and [mm]) are Subject to Manufacturing Tolerances and Change Without Notice



Z-100-C-R-89
STEEL DECK WATER INSULATED AND/OR OVERFLOW

Drain installed in a steel deck. Drain is illustrated with underdeck clamp (-C), roof sump receiver (-R), and 2 [51] high external water dam (-89). The (-89) featured is used where a level of water is to be maintained for insulation purposes or where an overflow drain is required. The (-89) option is also available in 8 [203] and 12 [305] diameter drains. (See Z-121 and Z-125).

Form # RD15

Date: 8/4/99

C.N. No. 83028

Rev.

ZURN INDUSTRIES, INC. ♦ SPECIFICATION DRAINAGE OPERATION ♦ 1801 Pittsburgh Ave. ♦ Erie, PA 16514

Phone: 814/455-0921 ♦ Fax: 814/454-7929 ♦ World Wide Web: www.zurn.com

In Canada: ZURN INDUSTRIES LIMITED ♦ 3544 Nashua Drive ♦ Mississauga, Ontario L4V1L2 ♦ Phone: 905/405-8272 Fax: 905/405-1292