



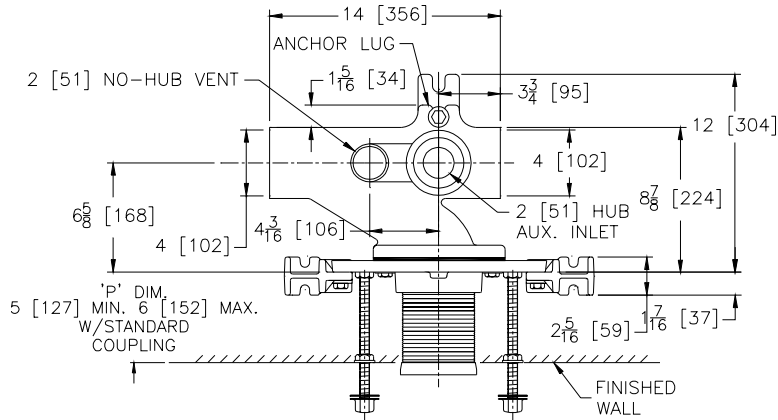
# Z-1203-100

## ADJUSTABLE HORIZONTAL SIPHON JET NO-HUB WITH AUXILIARY HUB INLET

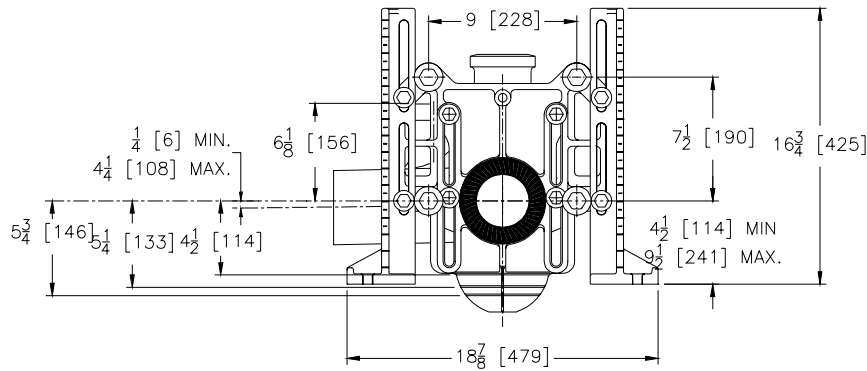
SPECIFICATION SHEET

TAG \_\_\_\_\_

Dimensional Data (inches and [ mm ]) are Subject to Manufacturing Tolerances and Change Without Notice



Product Number	Approx. Wt. Lbs. [kg]
Z-1203-100	67 [30]
Z-1203-100	67 [30]



**Note:**

1. Min. 'P' Dim. Obtainable=2 [51]
2. Feet bolted to floor using min. 1/2 [13] dia. bolts and back slots on carrier feet.
3. Back anchor foot required for secure installation.

**ENGINEERING SPECIFICATION:** ZURN Z-1203-100( ) Adjustable, horizontal siphon jet water closet "Rigid System" with 4 [102] No-Hub connections. Complete with Dura-Coated cast iron right hand or left hand main fitting, with 2 [51] vent and 2 [51] auxiliary hub inlet with sanitary sweep, adjustable gasketed face plate, universal floor mounted foot supports, corrosion resistant adjustable ABS coupling with integral test cap, fixture bolts, trim, and stud protectors. Rear anchor tie down and bonded "Neo-Seal" gasket.

**OPTIONS** (Check/specify appropriate options)

- Z-1203-100 4 [102] No-Hub Right Hand Inlet with Flow to Left
- Z-1203-100 4 [102] No-Hub Left Hand Inlet with Flow to Right

**PREFIXES**

- \_\_\_ Z- D.C.C.I. System with Zurn "ZZ" Adjustable Coupling\*
- \_\_\_ ZQ- D.C.C.I. System with Non-Adjustable Coupling

**SUFFIXES**

- \_\_\_ -A Auxiliary Support Assembly (For 'P' Dim. Greater than 18 [457])
- \_\_\_ -B Blowout Type Fixture Support
- \_\_\_ -CC Corrosion Resistant 6 [152] Long Cast Iron Coupling
- \_\_\_ -CL Coupling Length Greater Than Standard (Length Must be Specified)
- \_\_\_ -F Floor Mounted, Back Outlet Fixture Support
- \_\_\_ -G Galvanized Cast Iron
- \_\_\_ -M Auxiliary Foot Support for 'P' Dim. 10 [254] Thru 18 [457]
- \_\_\_ -VP Vandal Proof Trim
- \_\_\_ -W Adapter Assembly for Womens Urinal
- \_\_\_ -XH Extra-Heavy-Duty 500-Lb. [227 kg.] Carrier
- \_\_\_ -X3 3" [76] Foot Extension Assembly
- \_\_\_ -X4 4" [102] Foot Extension Assembly
- \_\_\_ -29 Mechanical Test Cap Assembly
- \_\_\_ -45 Finishing Frame for Siphon Jet System (For Blowout System specify -45 -B)
- \_\_\_ -50 Flush Valve Supply Support for Water Closets
- \_\_\_ -61 "ZZ" Coupling Wrench

\*REGULARLY FURNISHED UNLESS OTHERWISE SPECIFIED

REV. DATE: 09-17-01 C.N. NO. 88078

DWG. NO. P-14847 PRODUCT NO. Z-1203-100

ZURN INDUSTRIES, INC. ♦ SPECIFICATION DRAINAGE OPERATION ♦ 1801 Pittsburgh Ave. ♦ Erie, PA 16514

Phone: 814/455-0921 ♦ Fax: 814/454-7929 ♦ World Wide Web: www.zurn.com

In Canada: ZURN INDUSTRIES LIMITED ♦ 3544 Nashua Drive ♦ Mississauga, Ontario L4V1L2 ♦ Phone: 905/405-8272 Fax: 905/405-1292