



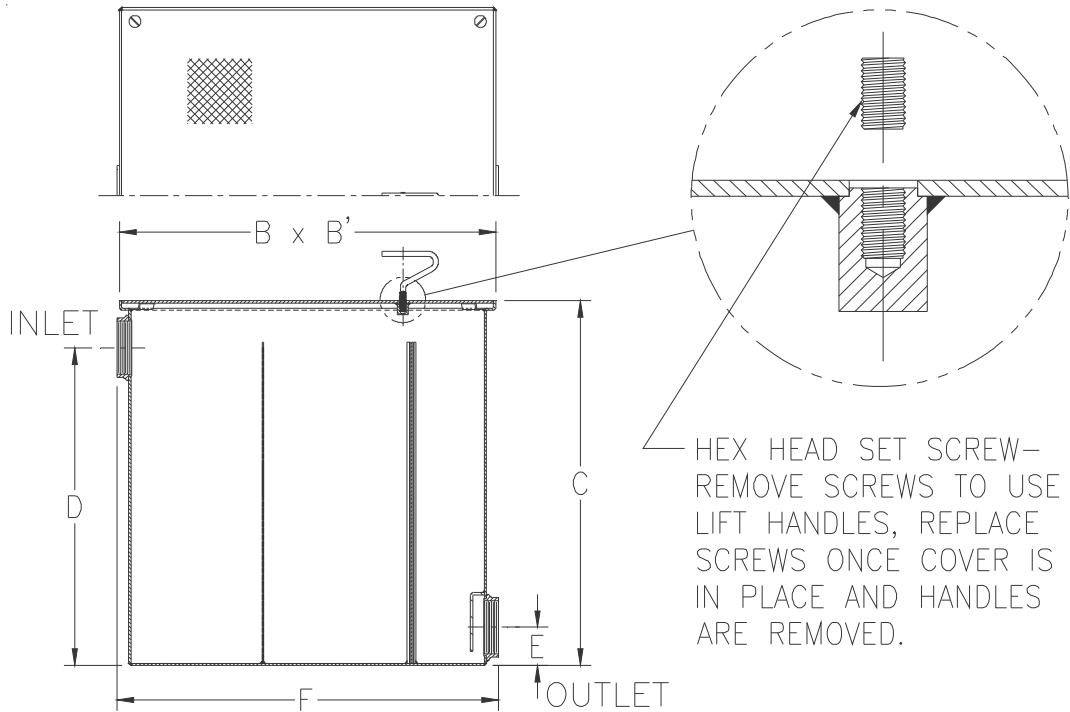
# Z1185-166

## LINT INTERCEPTOR WITH CUSTOM INLET HEIGHT

SPECIFICATION SHEET

TAG \_\_\_\_\_

Dimensional Data (inches and [ mm ]) are Subject to Manufacturing Tolerances and Change Without Notice



Size No. of Machines	Inlet/Outlet Size in [mm]	Flow Rate GPM. [LPM]	Approx. Wt. Lbs. [kg]	Dimensions In Inches [mm]					
				B	B'	C	D	E	F
7	3 [76]	70 [265]	155 [70]	25 [635]	25 [635]	20 [508]	14 [356]	3-1/4 [82]	25-1/2 [648]

### ENGINEERING SPECIFICATION: ZURNZ1185-166

Acid Resistant Coated interior and exterior fabricated steel lint interceptor, non-skid secured cover with removable lift handle, aluminum lint intercepting secondary screen assembly, and permanent primary straining baffle with 3/8" [10 mm] diameter perforated holes. Regularly furnished with high inlet and low outlet. Note: size #3 and #7 covers are not furnished with a lift handle.

### OPTIONS (Check/specify appropriate options)

#### PREFIXES

- \_\_\_ Z Acid Resistant Coated Fabricated Steel\*
- \_\_\_ ZS All Type 304 Fabricated Stainless Steel

#### SUFFIXES

- \_\_\_ -E Acid Resistant Coated interior and exterior fabricated steel extension section (Specify 'C' dimension required for recessed installation).
- \_\_\_ -RS Aluminum Screen Replacement Assembly

\* Regularly furnished unless otherwise specified.